



AMPCO

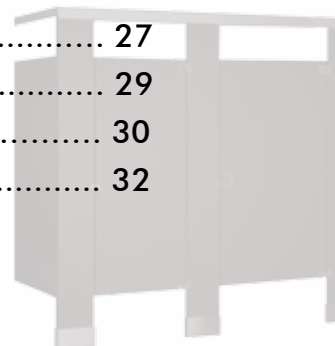


TOILET PARTITION CATALOG



TABLE OF CONTENTS

INTRODUCTION	2
SALES REPRESENTATIVES	3
CONSTRUCTION STYLES	4
COST INDEX	6
QUICK 6™	7
EVERGREEN™	8
HIGH PRESSURE LAMINATE	9
SOLID PHENOLIC CORE	10
PHENOLIC CORE WITH PVC EDGING	10
FORMICA® COLOR CHART FOR HPL/ PHENOLIC CORE	11
WILSONART® COLOR CHART FOR HIGH PRESSURE LAMINATE	12
SOLID PLASTIC (HDPE)	13
COLOR CHART FOR SOLID PLASTIC	14
POWDER COATED STEEL	15
STAINLESS STEEL	15
COLOR CHART FOR POWDER COATED STEEL	16
SOLID SURFACE	17
SOLID SURFACE COLOR CHART	18
SOLID SURFACE VENEER	20
COLOR CHART FOR SOLID SURFACE VENEER	21
HARDWARE	22
CARE AND CLEANING	27
LEED CERTIFICATION	29
LEED TABLE	30
INSTALLATIONS	32



INTRODUCTION

About AMPCO®

Ampco® was incorporated in August 1961 with one manufacturing plant in Miami. Today, we occupy 150,000 square feet at our four plants: Miami, FL; Morristown, TN; Sanger, TX; and Auburn, Washington.

Commercial restroom compartments and architectural wood flush doors are Ampco's main product lines. Quality products, reliable service, and competitive prices have led to steady growth in production capabilities, personnel, and satisfied customers.

Ampco sells through a network of qualified distributors in the United States and many other countries around the world. In addition, we have manufacturer's representatives promoting our products directly to specifiers. Call Ampco or visit us at www.ampco.com for the name of your local Ampco representative or distributor.

This catalog contains detailed information on the product lines that we manufacture. We are eager to supply your needs and requirements by listening you and answering any of your questions. Please feel free to contact us at any time.



This catalog is current as of September 2010 and accurately represents our products at that time. Ampco reserves the right to make modifications and improvements in our products and in the presentation of this catalog. Please call Ampco at 305/821-5700 x 107 or email info@ampco.com for current information.

Note to Specifiers:

You may also find more about Ampco by visiting our website at www.ampco.com or see us in AEC Daily and Sweets.

Our specifications are available on disk, or you may download them from our website at: www.ampco.com/specifications.html. CAD drawings are also available from Ampco or may be downloaded from Sweets Online at www.sweets.com.

Quotes:

E-MAIL: QUOTES@AMPCO.COM
TOLL FREE FAX: 866/216-5300

Quote software available using Windows operating platform



SALES REPRESENTATIVES

MANUFACTURER'S
REPRESENTATIVESIVOR SINGER & ASSOCIATES

Northern and Central Florida
6802 Stapoint Ct
Winterpark, FL 32792
Tel: 407/677-6004
Fax: 407/657-5060
isinger@ampco.com

I & H ASSOCIATES

Oklahoma
James J. Cavness
2175 Switzer Road
Sanger, TX 76266
Tel: 940/458-5475
Fax: 940/458-5769
jcavness@ampco.com

BARRETT GROUP

Ohio, West Pennsylvania, and West Virginia
Tom & Mary Barrett
6170 Centre Park Drive
West Chester, OH 45069
Tel: 513/779-9350
Fax: 513/779-1410
mbarrett@ampco.com

HARDWARE AGENTS

Michigan
Charles Smith
5355 Northland Drive, NE Suite C
#225 Grand Rapids, MI 49525
Tel: 616/363-3461
Fax: 616/363-3520
csmith@ampco.com

CLAIRE H CUSICK CO

Colorado, Wyoming, Idaho and Utah
6086 S. Filbert Ct.
Littleton, CO 80121
Phone: 303/771-0152
Fax: 303/771-3243
ccusickco@ampco.com

P J POLKE COMPANY

Long Island, NY and New Jersey
Daniel R Arthur
628 Route 10 #1
Whippany, NJ 07981
Phone: 973/515-7278
Fax: 973/515-3671
pipolke@ampco.com

JMK SALES CO INC

Iowa, Minnesota, North Dakota,
South Dakota and Wisconsin
Frank Connelly and Alicia Lange
12090 Margo Avenue S. Suite B
Hastings, MN 55033
Phone: 651/ 731-3609
Fax: 651/ 245-2197
jmksales@ampco.com

PACIFIC ARCHITECTURAL
MARKETING

N. California and N. Nevada
John McDonald and Rodney Evans
760-El Camino Real
Greenfield, CA 93927
Phone: 831/905-4959
Fax: 831/674-1602
pam@ampco.com

JT ARCHITECTURAL SALES

Arizona, New Mexico, S. Nevada
Josie and Jay Trapnell
4278 South Goodall Place
Tucson, AZ 85730
Phone: 520/407-5573
Fax: 520/407-6521
jta@ampco.com

GENERAL
MANAGERSSEAN MCFARLANE

4520 B Street NW Suite B
Auburn, WA 98001
Tel: 253/852-5900
Fax: 253/856-2859
smcfarlane@ampco.com

JUAN FURMAN

11400 NW 36th Avenue
Miami, FL 33167
Tel: 305/821-5700
Fax: 305/688-6191
jfurman@ampco.com

JIM STOREY

1200 Violet Avenue
Morristown, TN 37814
Tel: 423/586-3993
Fax: 423/586-3637
jstorey@ampco.com

AMPCO TEXAS

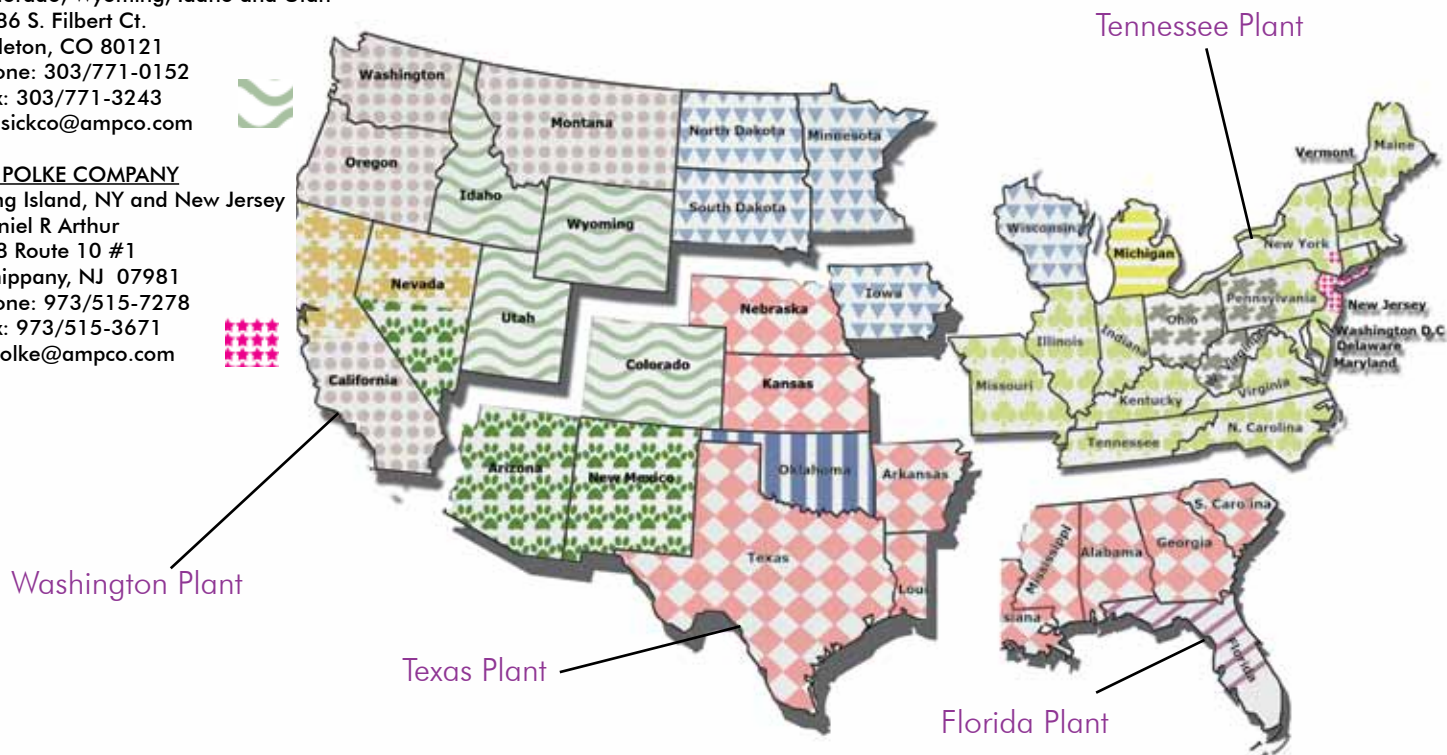
201 Railroad Avenue
Sanger, TX 76266
Tel: 940/458-7401
Fax: 940/458-3637
texas@ampco.com

TERRITORY
MANAGERSJASON BOECKLEN

Northwest/Southwest
4520 B Street NW Suite B
Auburn, WA 98001
Tel: 423/277-6312
Fax: 253/856-2859
jboecklen@ampco.com

MARTY BITTER

Midwest/Southeast
201 Railroad Avenue
Sanger, TX 76266
Direct: 817/233-7151
Tel: 940/458-7401
Fax: 940/458-3637
mbitter@ampco.com



CONSTRUCTION STYLES

Standard Compartment Styles

FLOOR MOUNTED

Floor mounted compartments are recommended where ceiling heights make installation of ceiling supported compartments impractical and where overhead bracing is not required.



CEILING SUPPORTED

Ceiling supported compartments are favored installations in construction with drop ceilings or span type ceiling systems. Ampco's ceiling supported compartments also offer unobstructed floor surface for easy maintenance.



OVERHEAD BRACED

Overhead braced compartments are recommended where structural rigidity is a necessity, especially where building construction and high ceilings prevent other types of installations.



FLOOR TO CEILING

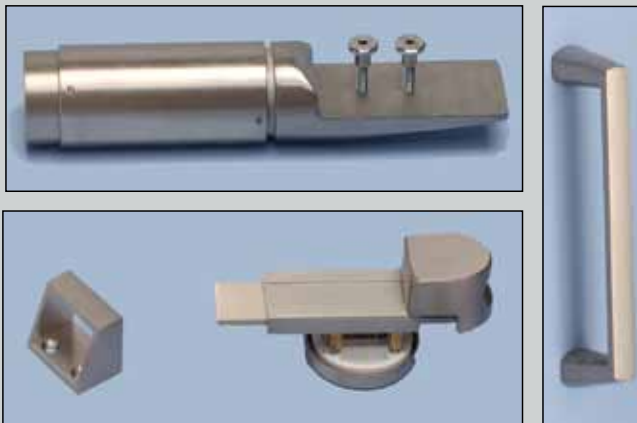
Floor to ceiling supported compartments are a popular Ampco® solution providing a sturdy installation. Mounting at the floor and ceiling eliminates the need for overhead bracing without sacrificing the rigidity and strength of the restroom compartments.



CONSTRUCTION STYLES

No-Sight Line Construction Style

EUROLINE™ HARDWARE



See Detailed hardware descriptions on page 24.



EUROLINE™

Ampco Euroline™ restroom compartments offer unsurpassed security and privacy achieved with a 6 inch (150 mm) floor clearance and a door mounting system that eliminates see-thru gaps.

Available in High Pressure Laminate, Solid Phenolic Core, Solid Surface, and Solid Surface Veneer.

Hardware Considerations

All components are constructed of heavy duty aluminum, finished with an attractive and durable powder coating process. Tamper resistant fittings and nylon bearings provide corrosion resistance. Hardware is blister packed to provide easy on-site storage, identification and installation.

Durability

The Euroline HPL Compartments are faced with high pressure laminate on all surfaces, and the Phenolic range is constructed for an even greater resistance to impact and high humidity levels. Solid Surface material is impervious to water, moisture and heat. They offer practical elegance and repairability. All systems provide strong tamper-proof, corrosion resistant hardware.

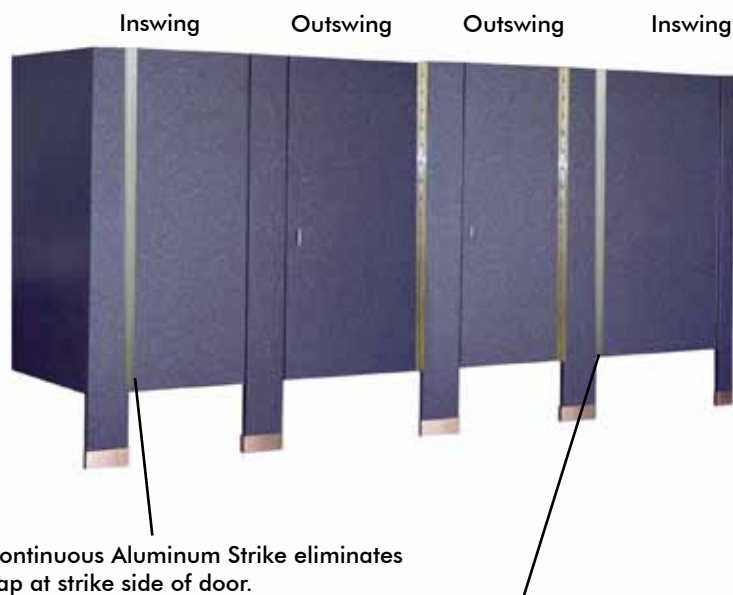
AMERILINE™

Ampco® Ameriline™ restroom compartment systems offer our partitions with a no sight line feature, giving our partitions the ultimate privacy. The system eliminates see through gaps between hinge and lock side of door.

Ameriline utilizes full height aluminum or stainless steel continuous hinge and full height satin anodized aluminum strike and keeper to eliminate see through gaps in hinge and latch side of the partition's door.

The Ameriline HPL Compartments are faced with high pressure laminate on all surfaces, and the Phenolic compartment is constructed for greater resistance to impact and humidity.

Ameriline Toilet Compartments offer an affordable no-sight line alternative with other materials and construction type systems.



The Continuous Hinges are available in Stainless Steel and Aluminum, eliminating see through gaps on hinge side of door.

INDEX COST

These indexes are comparison costs of material types used for toilet partitions. These prices do not reflect actual cost. For budget prices, please contact us at: info@ampco.com. For an actual quote, please fax your drawings and specifications to quotes@ampco.com or contact your local Ampco® distributor.

Estimates are FOB factory, unless otherwise noted.

Indexes and prices may fluctuate and are subject to change.

Index prices for each toilet compartment are based on overhead braced construction,
High Pressure Laminate = 100.

Toilet Partitions:

High Pressure Laminate	100
Powder Coated Baked Enamel	105
Quick 6™ High Pressure Laminate	105
Quick 6™ Phenolic	240
Solid Phenolic Core	235
Stainless Steel	245
Solid Plastic Polyethylene	250
Solid Phenolic with PVC edging	260
Evergreen™	260
Solid Surface Veneer (SSV)	700
Solid Surface	950

Euroline Toilet Partitions:

High Pressure Laminate	200
Solid Phenolic Core	265
Solid Surface	1100

QUICK 6™

Quick 6™ is Ampco's most popular quick ship program

- Six laminate colors, textured, graffiti-resistant finishes
- Quick 6™ Phenolic colors available in phenolic core, graffiti-resistant finishes
- High pressure laminate, overhead braced toilet partitions
- Phenolic Core, overhead braced toilet partitions (other construction types available for all other Phenolic Core)
- Ready to go out the door when you call

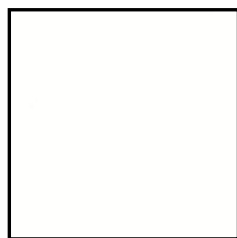
All standard sizes in stock at Ampco Florida, Ampco Tennessee, Ampco Texas, and Ampco Washington.



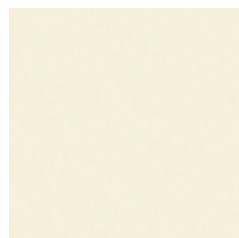
Manufactured to Ampco's Standard High Pressure Laminate Technical Specifications. Quick 6 laminates are NEMA Grade GP-50, 0.050" (1.2mm) thick.

Immediate delivery, Immediate savings, Immediate value. Great Prices!

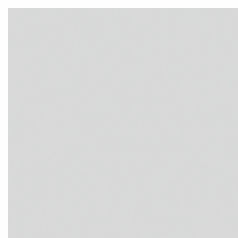
QUICK 6™ AVAILABLE IN HIGH PRESSURE LAMINATE



White



Almond



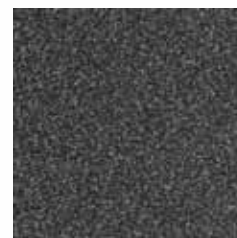
Gray



Natural Sand

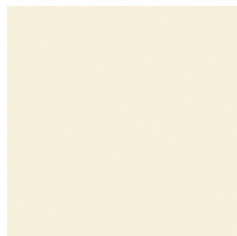


Gray Sand



Black Sand

QUICK 6™ AVAILABLE IN SOLID PHENOLIC



Almond



Natural Sand



Gray Sand



Black Sand

This color selector contains computer printed representations. Refer to actual product samples to confirm your selection.

Colors may vary from swatches shown. Samples are available upon request.

Please contact AMPCO® Marketing at marketing@ampco.com for actual samples of color and finish.

EVERGREEN™

Evergreen™ are face sheets that are bonded under heat and high pressure to phenolic resin-impregnated kraft paper sheets. All exposed edges are solid color, chamfered and free of milling marks.

Evergreen™ compartment systems are tough and durable. This beautiful material has solid color throughout.

Popular in high traffic public buildings, schools, and institutional facilities.

Virtually indestructible and suitable for wet areas, graffiti resistant finish.



CONSTRUCTION FEATURES:

- 3/4" (19mm) thick stiles and doors
- 1/2" (12mm) thick panels and urinal screens

Mounting Styles:

- Overhead Braced
- Floor to Ceiling
- Ceiling Hung
- Floor Mounted

Modesty Panels and Sights Screens:

- Floor Anchored
- Floor to Ceiling
- Wall hung
- Leg Screen

Fire Rating:

- Class B Fire Rating ASTM E84
- Flame Spread Index 26-75 maximum
- Smoke Development Index 100-45

Special Features:

- Non-ghosting graffiti removal
- Water Resistant
- Solid Color throughout
- Stainless Steel hardware
- Furnished hardware to comply with ANSI A-117 and Title 1-"T" of the Americans with Disabilities Act (ADA)
- 6 earth tone colors
- 10 year limited warranty

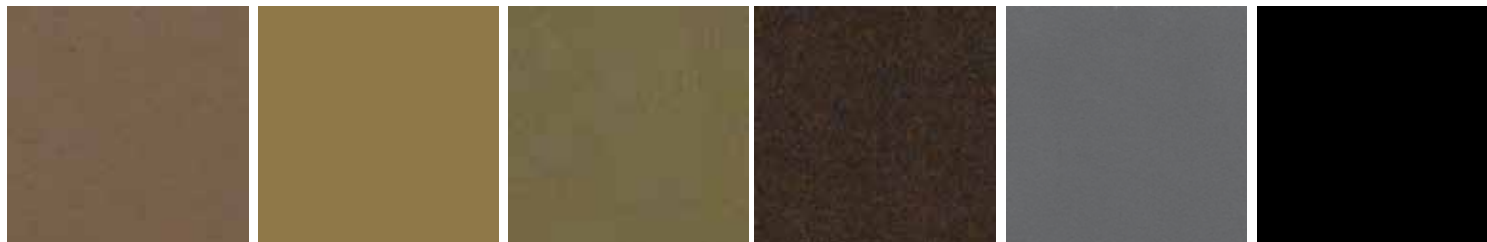
OPTIONAL FEATURES:

- Class A Fire Rating
- Ameriline™ no-sight line hardware with continuous hinge and strike (See on page 5)
- Euroline™ hardware (See on page 5)
- Optional 3/4" (19mm) thick panels/screens

STRENGTHS

- Durable Material
- Good Moisture Resistance
- Solid Color Throughout

COLOR SELECTIONS



Cinnamon*

Ginger*

Nutmeg*

Allspice

Gunmetal Grey**

Ebony

* Color may apply for Express Ship. Please contact factory for availability.

** Gunmetal Grey is a close color match to a color through phenolic but does not necessarily represents a color through match. Please request a sample before final approval.

Color batches may vary.

HIGH PRESSURE LAMINATE

Ampco® High Pressure Laminate compartment systems are the most popular specification, especially when a design requires flexibility, aesthetics, and economy.

Ampco's High Pressure Laminate components utilize NEMA GP-50 high pressure laminate and industrial grade 45lb. density particleboard. Bonding the edges before face laminate promotes water runoff, enhances color pattern aesthetics and inhibits deterioration.

Ampco features a full range of solid designer colors, patterns and finishes.

CONSTRUCTION FEATURES:

- 1-1/4" (31mm) thick stiles
- 1" (7/8" - 22mm) nominal thick doors, panels and screens
- Heavy duty cast chrome plated non-ferrous Zamac hinges and bracket hardware are standard
- High Pressure Laminate bonded with structural water resistant adhesives.

OPTIONAL FEATURES:

- 1" minimum (25mm) thick finished doors, panels and screens
- Plywood core, AB exterior grade
- Stainless Steel finished edges on doors, panels, stiles and screens
- Steel core stile
- Stainless Steel hardware
- Continuous aluminum or stainless steel wall brackets
- Continuous stainless steel cam hinges or three hinges per door
- Continuous aluminum adjustable hinge
- Ameriline™ no-sight line hardware with continuous hinge and strike
(See on page 5)
- Euroline™ hardware
(See on page 5)



High Pressure Laminate



High Pressure Laminate with Stainless Steel laminate edges



STRENGTHS

- Economically Priced
- Quick Ship Availability
- Large color selection
- High Graffiti Resistance

SOLID PHENOLIC CORE

Ampco's Solid Phenolic compartment systems provide the best value available with strength, durability, color, finish selection, and design flexibility.

For high traffic public buildings, schools, and institutional facilities. A virtually indestructible core makes it suitable for wet areas.

Material Characteristics:

- Good machinability
- Best Value
- Lightweight
- Heat and wear resistant
- Resists corrosion and chemicals
- Good mechanical strength & dimensional stability
- Low moisture absorption
- Virtually indestructible core
- Recommended for high traffic and high humidity

OPTIONAL FEATURES:

- 1" (25mm) thick stiles
- Continuous stainless steel hinge or three hinges per door
- Continuous Aluminum adjustable hinge
- Continuous stainless steel or aluminum wall brackets
- Cast chrome plated non-ferrous Zamac hardware
- Ameriline™ no-sight line hardware with continuous hinge and strike (See on page 5)
- Euroline™ hardware (See on page 5)

CONSTRUCTION FEATURES:

- 3/4" (19mm) thick stiles and doors
- 1/2" (12mm) thick panels and screens
- Heavy duty cast stainless steel door hardware and stamped stainless steel bracket hardware
- Polished black edges
- Class B fire rating



STRENGTHS

- Durable Material
- Good Moisture Resistance
- Extensive Color Selection

PHENOLIC CORE WITH PVC EDGING

With Ampco's 3 mm PVC/ABS edge tape, you can color-match your component edging with the corresponding surface. The tape is structurally bonded to the phenolic core material.

Choose from an array of colors and patterns to enhance your overall design aesthetic. Apart from simply being pleasing to the eye, the tape provides superior edge protection.

Solid phenolic core toilet partition material and 3 mm PVC/ABS edge tape provides the best value for your system and specifications.



FORMICA® STANDARD HIGH PRESSURE LAMINATE/ PHENOLIC CORE COLOR CHART

- * **E** Indicates colors available for Express Ship Phenolic from Florida, Tennessee and Texas Plants
- * **W** Indicates colors available for Express Ship Phenolic from Washington Plant (for more colors available check WA Shipping Flyer)
- * For High Pressure Laminate Express Ship Colors please contact factory for available colors.



White 949-58	Antique White Oxide 303-58	Beige 958-58	Beige Grafix 506-58	Natural Canvas 7022-58 WE	Jute Gauze 7709-58	Cotta Stone 7266-58
GeoWhite 5270-58	Antique White 932-58	Almond 920-58	Mineral Spa 6920-58	Cardboard Solidz 7813-58	Metal Sun 6922-58	Sienna Terra 72166-58
Birch 921-58	Chalk Solidz 7814-58	Tuscan Marble 7736-58	Autumn Indian Slate 3687-58 E	Stop Red 839-58	New Burgundy 7966-58 WE	Dark Chocolate 2200-58
Nature Solidz 7815-58	Possum 5343-58	Metal Earth 3512-58	Forest Terra 7219-58	Crayon 7226-58	Earthwash 7213-58	Graphite 837-58
Folkstone 927-58	Buffed Aluminum 7740-58	Steel 1484-58	Sky Terra 7694-58	Breeze Solidz 3502-58	Marine Blue 914-58 E	Navy Grafix 7018-58 WE
Folkstone Grafix 507-58	Fogdust 1816-58	Citadel 1097-58	Geo Citadel 5273-58	Stellar 689-58	Graphite Grafix 515-58 E	Black 909-58 E

NOTE: All items shown are available for high pressure laminate and solid phenolic restroom compartments. Express Ship phenolic colors are indicated with an "E" from FL, TX and TN facilities. A "W" indicates Express Ship from WA facility.

AMPCO® Quick 6™ and AMPCO® Quick 6™ phenolic selection, refer to Quick 6™ color card.

Color Selections can be viewed on our website at www.ampco.com

All Standard laminates are NEMA grade GP-50, .050" (1.2mm) thick. Standard Finish is (-58) Matte Textured Finish as indicated. For a selection other than Formica® Colors, a non-Standard charge may apply. Check with factory for pricing and availability. This brochure contains digital representations of Formica® Brand Products. Refer to actual samples to confirm your final selection. For samples call 1-800-FORMICA™ or on-line at www.formica.com

Formica® and the Formica® Anvil logo are registered trademarks of The Diller Corporation, a subsidiary of The Formica Corporation. 1-800-FORMICA™ is a trademark of The Diller Corporation, a subsidiary of The Formica Corporation.

WILSONART® STANDARD HIGH PRESSURE LAMINATE COLOR CHART



						
Antique White 1572-60	Natural Almond D30-60	Western White 4869-60	White Tigris 4783-60	Radium EV 4812-60	Carbon EV 4820-60	Brittany Blue D321-60
						
Tan Soapstone 4887-38	Desert Zephyr 4841-60	Nickel EV 4813-60	Tungsten EV 4814-60	Pewter Mesh 4878-38	Evening Tigris 4674-60	Western Iron 4875-60
						
Mission Stucco 4850-38	Lodestone 4680-60	Mission Stone 4853-38	Sable Soapstone 4883-38	Western Storm 4872-60	Windswept Bronze 4794-60	Morro Zephyr 4846-60
						
Tawny Legacy 4663-60	Spiced Zephyr 4859-60	Western Hills 4874-60	Flame Soapstone 4884-38	Hollyberry D307-60	Mission Glaze 4854-38	Copper Mesh 4881-38
						
Loden Zephyr 4844-60	Green Tigris 4667-38	Bronze Legacy 4656-60	Misted Zephyr 4843-60	Green Soapstone 4885-38	Mission Sage 4848-38	Mission Smoke 4847-38
						
Platinum D315-60	Pearl Soapstone 4886-38	Pewter Brush 4779-60	Oiled Soapstone 4882-38	Windswept Pewter 4795-60	Carbon Mesh 4880-38	Black 1595-60

NOTE: All items shown are available for high-pressure laminate restroom compartments. Solid plastic polyethylene, phenolic, solid surface, Ampco® Quick 6™, and powder-coated baked enamel have separate color selector cards. Color selections can be viewed on our website at www.ampco.com. All standard laminates are NEMA grade GP-50, .050" (1.2mm) thick. Standard Finish is -60 Textured Finish and -38 Fine Velvet Texture Finish. Check with the factory for pricing and availability. This brochure contains digital representation of Wilsonart Brand Products. Refer to actual samples to confirm your selection. Wilsonart® and Wilsonart® logo are registered trademarks of Illinois Tool Works Inc. To order samples, call 1.800.433.3222 or order online at www.wilsonart.com.

SOLID PLASTIC (HDPE)

Ampco's solid plastic high density polyethylene compartment systems utilize the latest technological polymer resin composition. Recommended for parks, schools, recreational facilities, and high traffic locations.

- Water and graffiti resistant
- Virtually maintenance-free
- Will not delaminate or oxidize
- Impact and wear resistant



STRENGTHS

- Durable Material
- Good Moisture Resistance
- No Delamination
- Solid Color Throughout

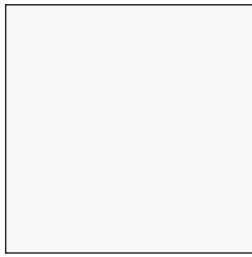
CONSTRUCTION FEATURES:

- 1" (25mm) nominal thick doors and panels
- Clear satin anodized aluminum hardware
- Graffiti resistant textured surface
- Solid color throughout

OPTIONAL FEATURES:

- Continuous stainless steel brackets and/or hinges
- Vinyl plastic continuous brackets and/or shoes
- Continuous aluminum adjustable hinge
- Continuous aluminum wall brackets
- Double height aluminum wall brackets
- Stainless Steel hardware
- Aluminum heat sink mounted on bottom of doors and panels
- Ameriline™ no-sight line hardware with continuous hinge and strike (See on page 5)
- Euroline™ hardware (See on page 5)

SOLID PLASTIC POLYETHYLENE (HDPE) COLOR CHART



White



Hunter Green



Frost



Khaki



Marine Blue



Indigo



Ash Gray



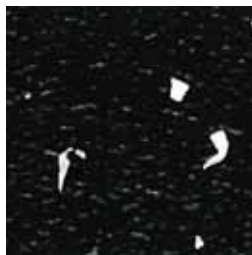
Burgundy Wine



Sable



Black



Black Confetti*



Charcoal

Matching shoes and brackets only available in solid colors.

These are AMPCO® Standard Solid Plastic High Density Polyethylene (HDPE) color selections. This color selector contains computer printed representations. Refer to actual product samples to confirm your selection.

Colors may vary from swatches shown. Samples are available upon request.

Please contact marketing at marketing@ampco.com for actual samples of color and finish.

The Standard finish is a textured finish. Solid plastic material shall be nominal 1" thick polymer resin construction.

*The decorative white particulate or specs in the Black Confetti color is not color through. The white particulate is processed on the surface of each side.

Additional colors are available but carry an up-charge. Contact the factory for pricing and availability.

AMPCO® manufactures High Pressure Laminate, Phenolic, Phenolic with PVC edging, Color thru Phenolic (Evergreen), Powder-Coated Steel, Stainless Steel, Solid Plastic, Solid Surface and Solid Surface Veneer Toilet Partitions and Architectural Wood Flush Doors.

POWDER COATED STEEL

Ampco® Powder Coated Baked Enamel Steel Compartment Systems are economical and long lasting. Ampco's baked enamel system provides the toughest paint finish in the industry as measured by ASTM standards for salt spray, humidity and impact. Rounded stile and door edges provide a soft relief and prevent edge chipping.

CONSTRUCTION FEATURES:

- 1" (25 mm) thick door and panel
- 1-1/4" (32 mm) thick pilaster
- Cast chrome plated non-ferrous Zamac hardware
- All corners welded for strength, rigidity and longevity

OPTIONAL FEATURES:

- Continuous aluminum or stainless steel hinge
- Cast stainless steel hardware
- Continuous stainless steel or aluminum wall bracket
- Ameriline™ no-sight line hardware with continuous hinges and strike (See on page 5)

STRENGTHS

- Durable Material
- Economically Priced
- Wide Variety of Colors
- Good Impact Resistance

STAINLESS STEEL

Ampco's stainless steel compartment systems are considered the finest in the industry. Excellent for installations where appearance and strength are prime considerations. Soft brushed satin, welded corners stainless steel material has soft radius edges on doors, panels, screens and stiles. Ampco's superior design imparts a visual beauty unmatched by any other system. Recommended for high humidity applications. Shipped with protective PVC film which is easily removed after installation.

CONSTRUCTION FEATURES:

- 1" (25 mm) thick door and panel
- 1-1/4" (32 mm) thick pilaster
- Heavy duty cast chrome plated non-ferrous Zamac hardware
- All corners welded for strength, rigidity and longevity

OPTIONAL FEATURES:

- Continuous aluminum adjustable hinge
- Cast stainless steel hardware
- Continuous stainless steel or aluminum wall bracket

- Continuous stainless steel hinge
- 5WL textured and leather grain finishes available
- Ameriline™ no-sight line hardware with continuous hinge and strike (See page 5)

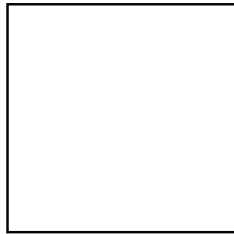
STRENGTHS

- Durable Material
- Economically Priced
- Good Impact Resistance



POWDER COATED STEEL COLOR CHART/ STAINLESS STEEL FINISHES

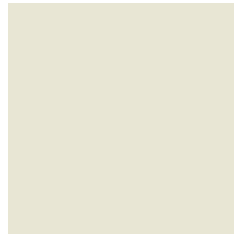
STANDARD COLORS * E Indicates colors available for Express Ship Program



White 949PC



Porcelain 466PC



Folkstone 927PC



E Almond 920PC



E Organic Green 6904PC



Dark Chocolate 2200PC



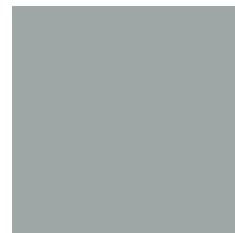
Stop Red 839PC



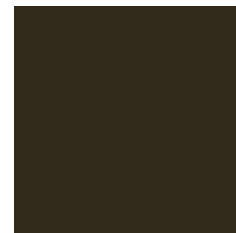
Burgundy 966PC



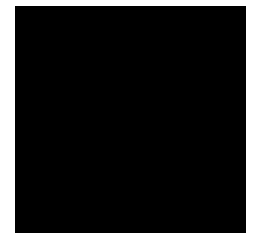
Marine Blue 914PC



Steel 1484PC

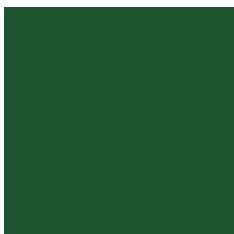


Graphite 837PC



Black 909PC

PREMIUM COLORS



Hunter Green 967PC



Pure Orange 2004PC



Tan 0055PC

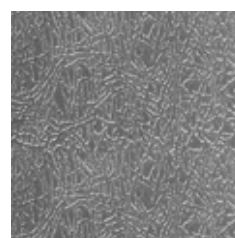


Peaceful Blue 231PC

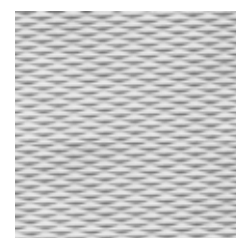
STAINLESS STEEL STANDARD FINISH



Brushed Stainless



Leather Grain



5WL

STAINLESS STEEL PREMIUM FINISH

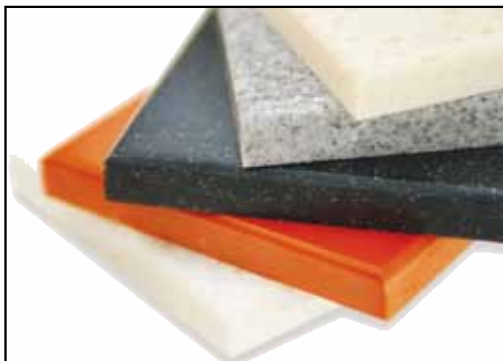
This color selector contains computer printed representations of powder coated paint colors. Refer to actual product samples to confirm your selection. **Colors may vary from swatches shown. Actual coated chips are available upon request.**

For premium and non-standard colors, an additional charge may apply. Check with the factory for pricing and availability.

LEED credit applicable in some applications. Please check factory for more information. Metal Toilet Partitions are manufactured in AMPCO® Texas.

AMPCO® manufactures High Pressure Laminate, Phenolic, Phenolic with PVC edging, Color thru Phenolic (Evergreen), Powder-Coated Steel, Stainless Steel, Solid Plastic, Solid Surface and Solid Surface Veneer Toilet Partitions and Architectural Flush Wood Doors.

SOLID SURFACE



If a toilet partition is damaged by graffiti, the surface can be renewed. If the product is damaged by etching or deep scratches, the damaged area can be repaired. Most can be brought back to their original look with minimum hassle and expense.

STRENGTHS

- Durable Material
- Good Moisture Resistance
- Repairability
- Anti- Microbial
- Fire Rating Class A

Ampco® solid surface compartment systems are perfect applications where practical elegance, rugged durability, and ease of maintenance are important considerations. Luxurious colors and patterns throughout the material thickness offer the added advantage of easy on-site repair. Impervious to water, moisture and heat. Features a Class "A" fire rating.

Solid Surface contributes to sustainable building design. It has exceptional durability and extended life cycles, offering a beautiful and cost-effective surface with the added value of reduced waste.

Nontoxic and non allergic. Material has natural anti-microbial features.

Its nonporous, and with proper cleaning it does not support the growth of mold, mildew, and bacteria, which makes it an excellent option for hospitals, hotels and restaurants.

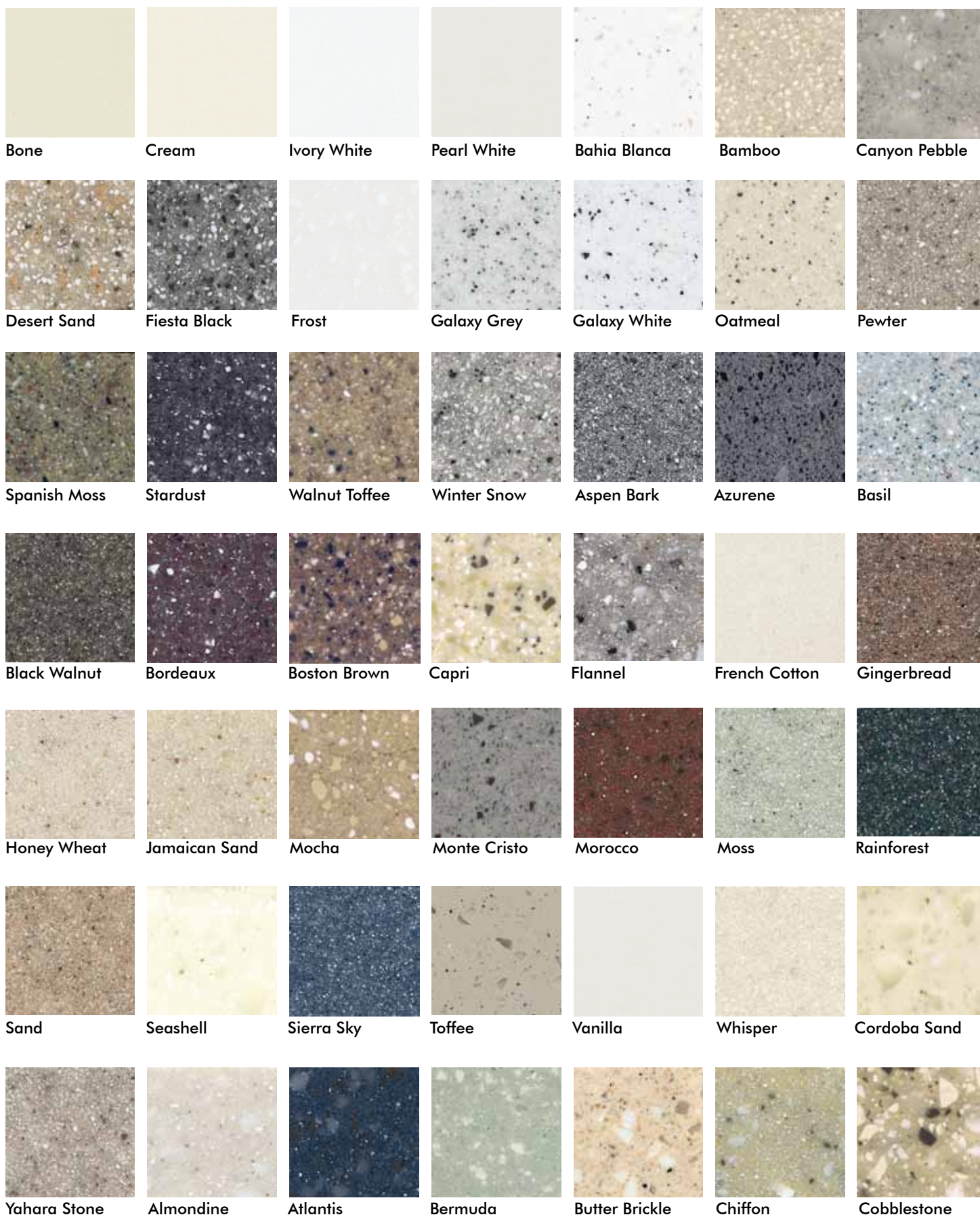
CONSTRUCTION FEATURES:

- 3/4" (19mm) thick door and stile thickness
- 3/4" (19mm) thick panel
- Stainless Steel Hardware
- Overhead braced or floor to ceiling construction
- Heavy Duty three or four surface mounted cast stainless steel hinges
- Class A Fire Rating

OPTIONAL FEATURES:

- 1/2" (12mm) thick panel
- Ceiling Hung (Restrictions Apply)
- Continuous aluminum adjustable hinge
- Continuous stainless steel wall brackets and hinges
- Concealed hardware features eliminate fasteners from visibility on outside of compartment
- Euroline™ hardware (See on page 5)

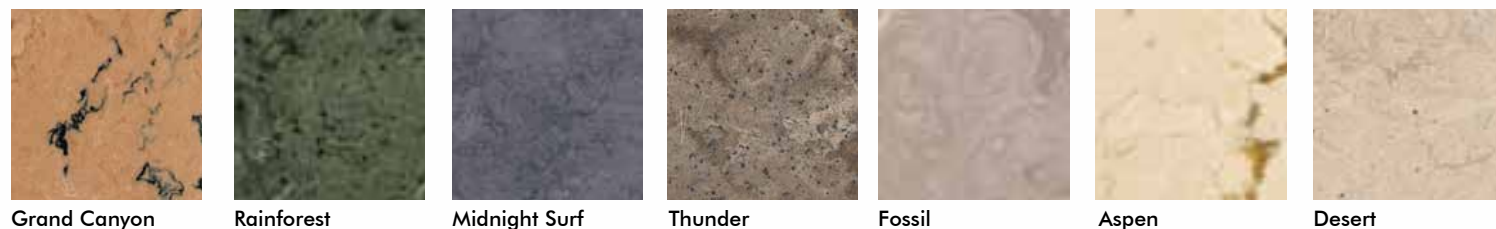
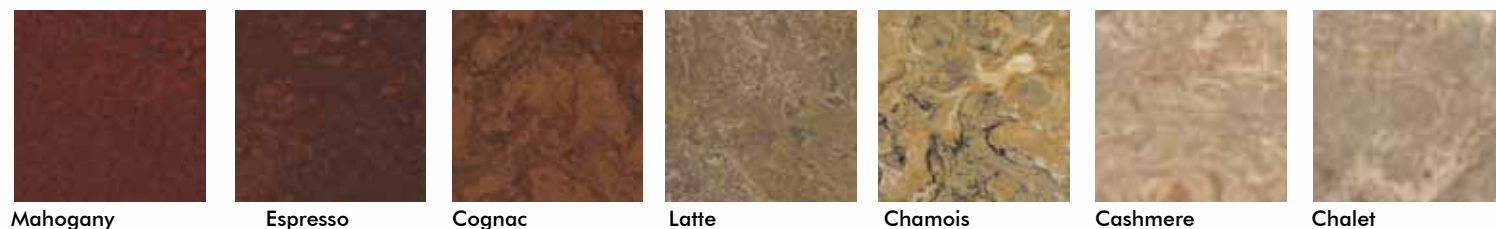
SOLID SURFACE COLOR



SOLID SURFACE COLOR CHART



PREMIUM SOLID SURFACE COLOR CHART

Premium IPremium II

This color selector contains computer printed representations of solid surface colors. Refer to actual product samples to confirm your selection.

Colors may vary from swatches shown. Actual samples are available upon request. Standard finish is a satin matte. For premium and non-standard colors an additional charge may apply. Check with the factory for pricing and availability.

LEED credit applicable in some applications. Please check factory for more information. Solid Surface Partitions are manufactured in AMPCO Florida.

AMPCO® manufactures High Pressure Laminate, Phenolic, Phenolic with PVC edging, Color thru Phenolic (Evergreen), Powder-Coated Steel, Stainless Steel, Solid Plastic, Solid Surface and Solid Surface Veneer Toilet Partitions and Architectural Flush Wood Doors.

SOLID SURFACE VENEER

Ampco® offers restroom compartments faced with Solid Surface Veneer. The SSV material is 1/8" (3mm) thick; therefore, it is more economical, yet carries similar advantages to solid surface, such as aesthetic elegance, ease of maintenance, and durability. The 1/8" (3mm) veneer is bonded to a core and is available in a range of luxurious colors and patterns.

Solid Surface Veneer (SSV) is becoming more popular as the cost is less than solid surface material.

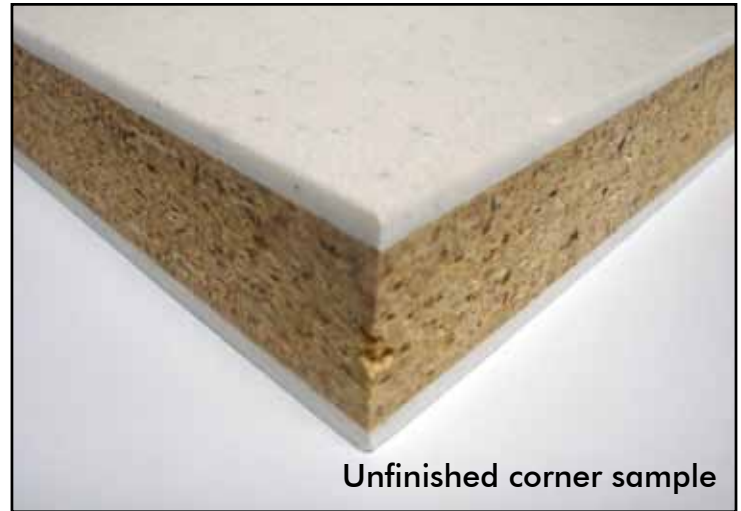
From the surface, SSV looks like 100% solid surface material delivering the same effect as standard solid surfacing materials with similar product characteristics.

CONSTRUCTION FEATURES:

- 1-1/4" (31mm) thick stiles
- 1" (25mm) thick doors, panel and screens
- Heavy Duty cast stainless steel door hardware and stamped stainless steel brackets
- Available in all construction types

OPTIONAL FEATURES:

- Heavy duty cast chrome plated non-ferrous Zamac hardware
- Continuous stainless steel wall bracket hinge
- Continuous aluminum adjustable hinge
- Continuous aluminum or stainless steel bracket
- Ameriline™ no-sight line hardware with continuous hinge and strike
(See on page 5)



Unfinished corner sample



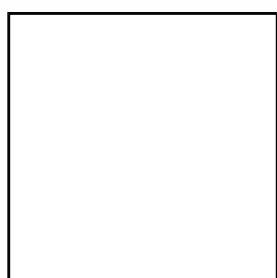
Finished corner sample



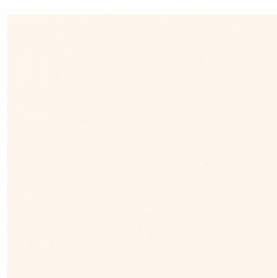
STRENGTHS

- Durable Material
- Similar benefits as solid surface without the high price
- Repairable

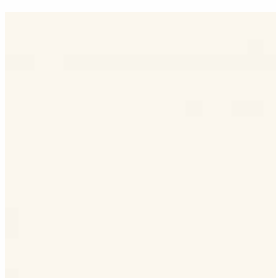
SOLID SURFACE VENEER COLOR CHART



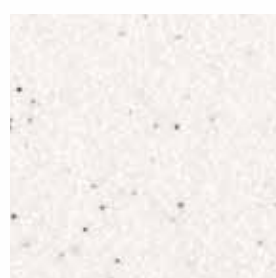
Powder



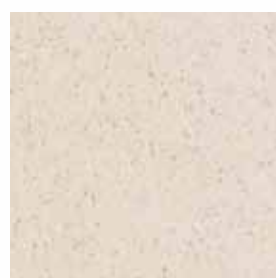
Foam



Cream



Sparkling Water



Sand Castle



Pumice



Afternoon Beach



Snowcap



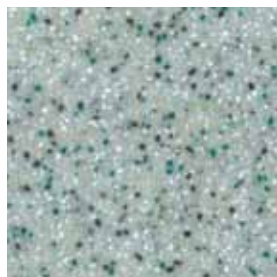
Silica



Reef



Bronze



Seaweed



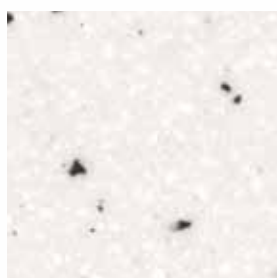
Infinity



Star Shine



Flint



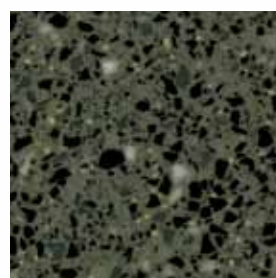
Juneau



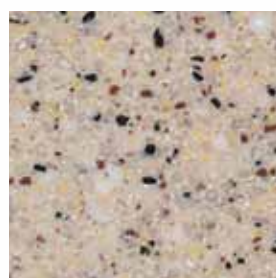
Kokoura



Casablanca



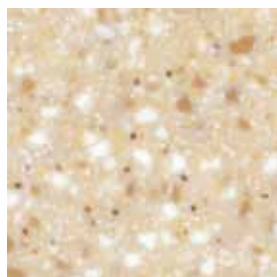
Olivine



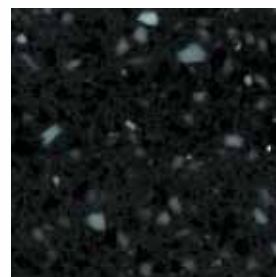
Fargo



Palermo



Gold Bullion



Black Coral

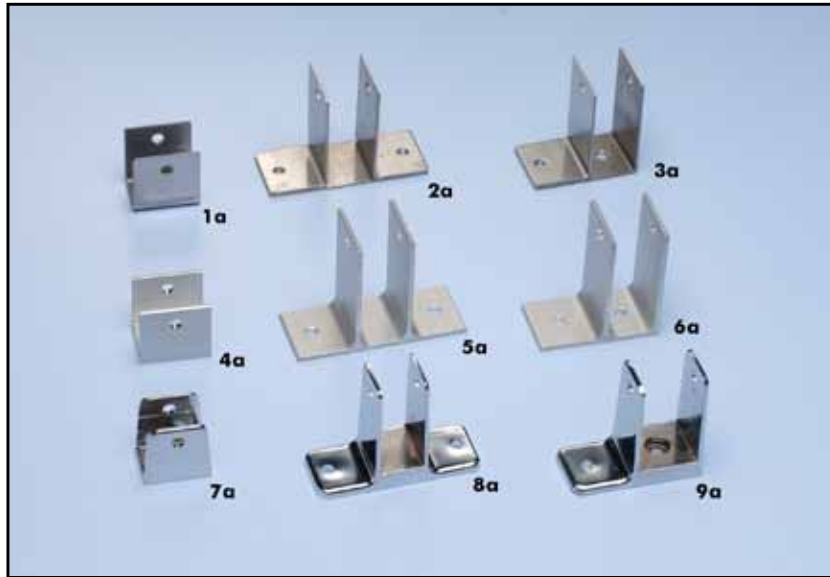
Colors may vary from swatches shown. Actual samples are available upon request.

Leed credit applicable in some applications. Please check factory for more information. Solid Surface Veneer toilet partitions are manufactured in AMPCO® Florida.

AMPCO® manufactures High Pressure Laminate, Phenolic, Phenolic with PVC edging, Color through Phenolic (Evergreen), Powder Coated Steel, Stainless Steel, Solid Plastic, Solid Surface and Solid Surface Veneer Toilet Partitions and Architectural Flush Wood Doors.

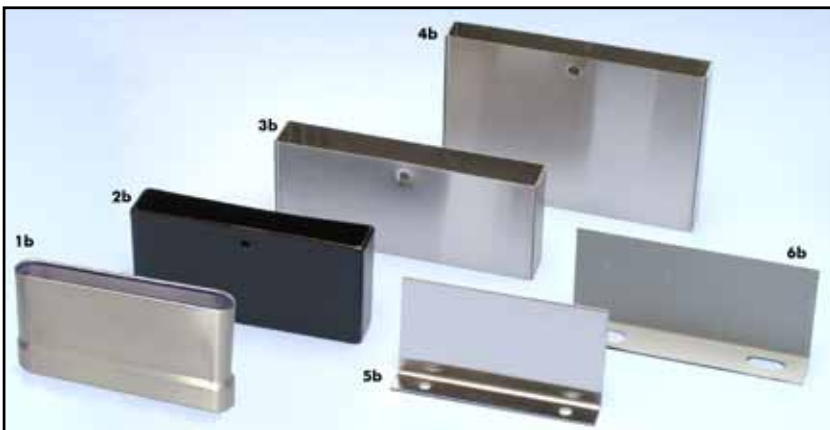
HARDWARE

Brackets



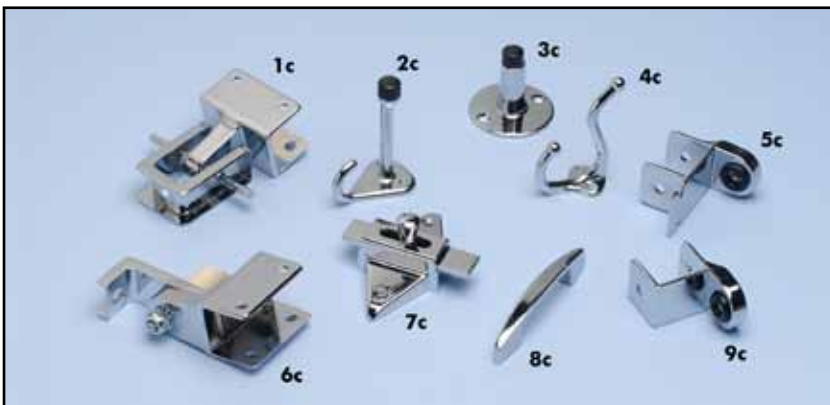
ITEM #	DESCRIPTION
1a	Stamped Stainless Steel U Bracket available in 1/2", 3/4", 7/8" and 1"
2a	Stamped Stainless Steel T Bracket available 1/2", 3/4", 7/8" and 1"
3a	Stamped Stainless Steel F Bracket available in 1/2", 3/4", 7/8", 1" and 1 1/4"
4a	Aluminum U Bracket, available in 1"
5a	Aluminum T Bracket, available in 1"
6a	Aluminum F Bracket, available in 1" and 1 1/4"
7a	Zamac U Bracket available in 7/8" and 1"
8a	Zamac T Bracket available in 3/4", 7/8" and 1" and 1 1/4"
9a	Zamac F Bracket 3/4", 7/8", 1" and 1 1/4"

Shoes



ITEM #	DESCRIPTION
1b	Stainless Steel shoe for Baked Enamel and Stainless Steel
2b	Plastic vinyl shoe for Plastic available in 1" X 3"H
3b	Stainless Steel shoe for HPL 3"H available in 3/4", 1" and 1 1/4"
4b	Stainless Steel shoe for Phenolic core 5"H available in 3/4" and 1"
5b	L Plate available in 3/4"
6b	L Plate available in 1 1/4"

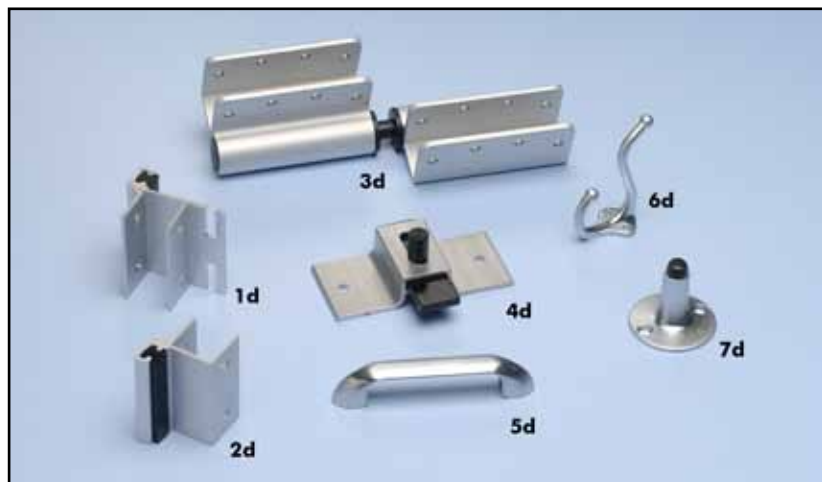
Cast Chrome Plated Zamac Door Pack for High Pressure Laminate Compartments



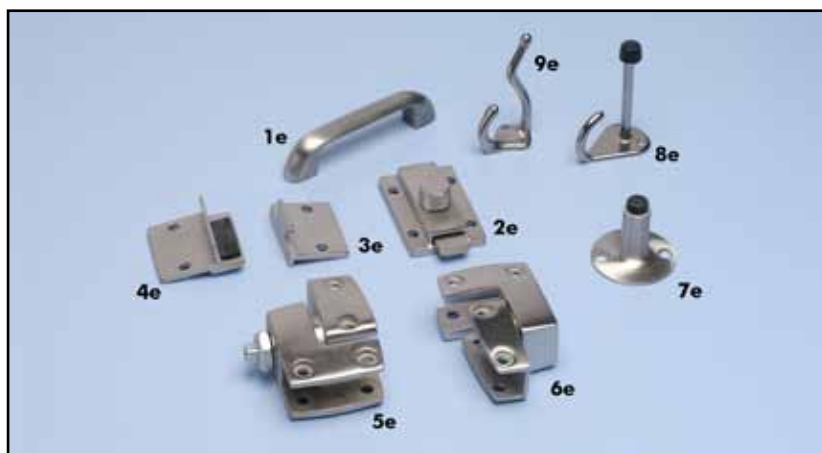
ITEM #	DESCRIPTION
1c	Top Adjustable Hinge Set
2c	Inswing Door Hook
3c	Outswing Door Stop
4c	Outswing Door Hook
5c	Inswing Keeper
6c	Bottom Adjustable Hinge Set
7c	Outswing and Inswing Slide Latch
8c	Outswing Door Pull
9c	Outswing Keeper

*Optional on Phenolic Core

HARDWARE

Clear Satin Anodized Aluminum Door Pack for Solid Plastic (HDPE) Compartments

ITEM #	DESCRIPTION
1d	Inswing Keeper
2d	Outswing Keeper
3d	8" RH or LH adjustable hinge set
4d	Inswing Outswing Slide Latch
5d	Outswing Door Pull
6d	Outswing Door Hook
7d	Outswing Door Stop

Stainless Steel Door Pack for Phenolic Core Compartments

ITEM #	DESCRIPTION
1e	Outswing Door Pull
2e	Inswing and Outswing Slide Latch
3e	Inswing Keeper
4e	Outswing Keeper
5e	Bottom Adjustable Hinge
6e	Top Adjustable Hinge
7e	Outswing Door Stop
8e	Inswing Door Hook
9e	Outswing Door Hook

*Optional on High Pressure Laminate

Cast Chrome Plated Zamac Door Pack for Stainless Steel and Baked Enamel Compartments

ITEM #	DESCRIPTION
1f	Inswing Keeper
2f	Outswing Keeper
3f	Outswing Door Stop
4f	Outswing Door Hook
5f	Outswing Door Pull
6f	Inswing and Outswing Slide Latch
7f	Inswing Door Hook
8f	Bottom Adjustable Hinge Set
9f	Top Adjustable Hinge Set

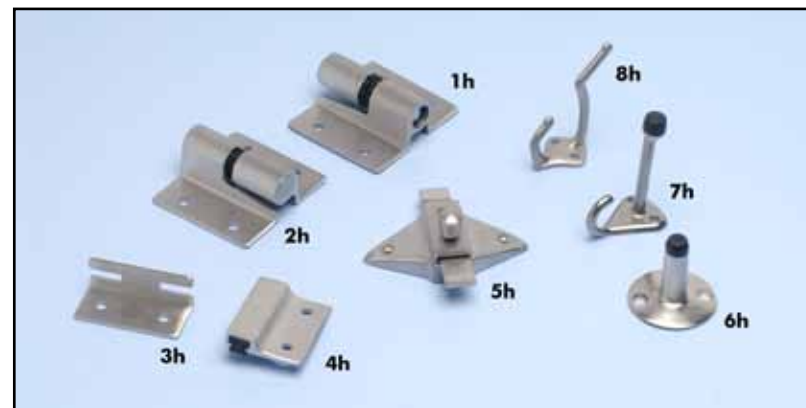
HARDWARE

Stainless Steel Door Pack for Stainless Steel and Baked Enamel Compartments



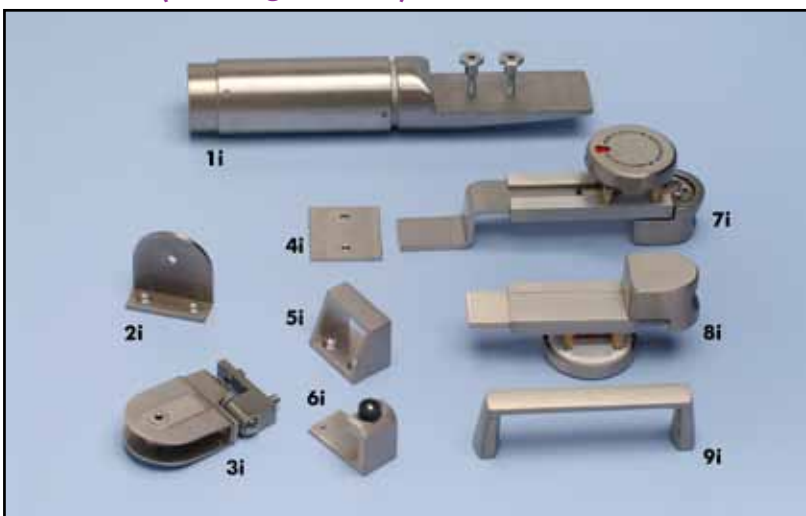
ITEM #	DESCRIPTION
1g	Inswing Keeper
2g	Outswing Keeper
3g	Outswing Door Stop
4g	Inswing Door Hook
5g	Outswing Door Hook
6g	Inswing and Outswing Slide Latch
7g	Outswing Door Pull
8g	Bottom Adjustable Hinge Set
9g	Top Adjustable Hinge Set

Stainless Steel Door Pack for Solid Surface Compartments



ITEM #	DESCRIPTION
1h	Surface Mounted Adjustable Hinge Top
2h	Surface Mounted Adjustable Hinge Bottom
3h	Inswing Keeper Split Emergency
4h	Outswing/Inswing Keeper Split Bumper
5h	Inswing and Outswing Slide Latch
6h	Outswing Door Stop
7h	Inswing Door Hook
8h	Outswing Door Hook

Euroline (No Sight Line) Hardware



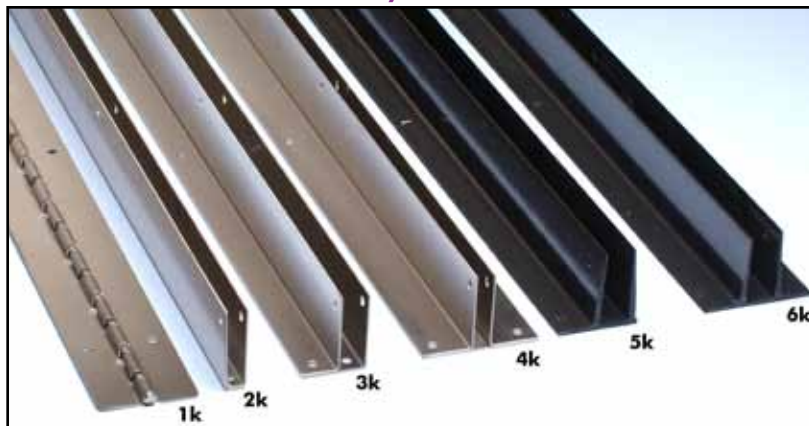
ITEM #	DESCRIPTION
1i	Pedestal Stainless Steel Finished Aluminum available in 1/2" and 3/4"
2i	Stainless Steel Finished Aluminum L Bracket available in 1/2" and 3/4"
3i	Stainless Steel Finished Aluminum Hinge available in 1/2" and 3/4" Three (3) per door
4i	Outswing Keeper Finished Aluminum
5i	Inswing Keeper Finished Aluminum
6i	Inswing Door Hook Finished Aluminum
7i	Outswing Slide Latch with occupancy indicator Finished Aluminum
8i	Inswing Slide Latch Finished Aluminum
9i	Outswing Door Pull Finished aluminum

*Optional on High Pressure Laminate, Phenolic Core, Solid Surface, and Solid Surface Veneer

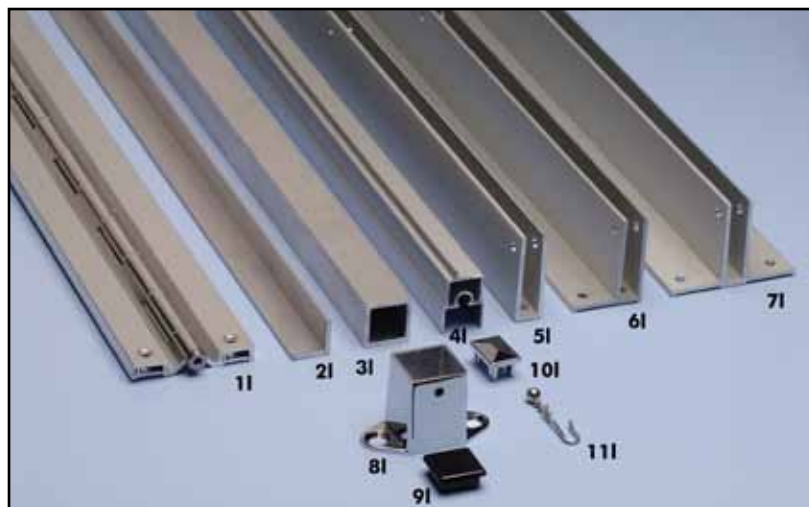
HARDWARE

Hinges

ITEM #	DESCRIPTION
1j	Satin Anodized Aluminum Hinge for Solid Plastic 8" RH or LH
2j	Bottom Bracket Hinge Stainless Steel for Phenolic
3j	Top Hinge Stainless Steel for Phenolic
4j	Surface Mounted Hinge set, cast stainless steel
5j	Zamac Bottom Door Hinge for HPL
6j	Zamac Top Door Hinge for HPL
7j	Brass Surface Mounted Hinge set

Stainless Steel and Vinyl Hardware

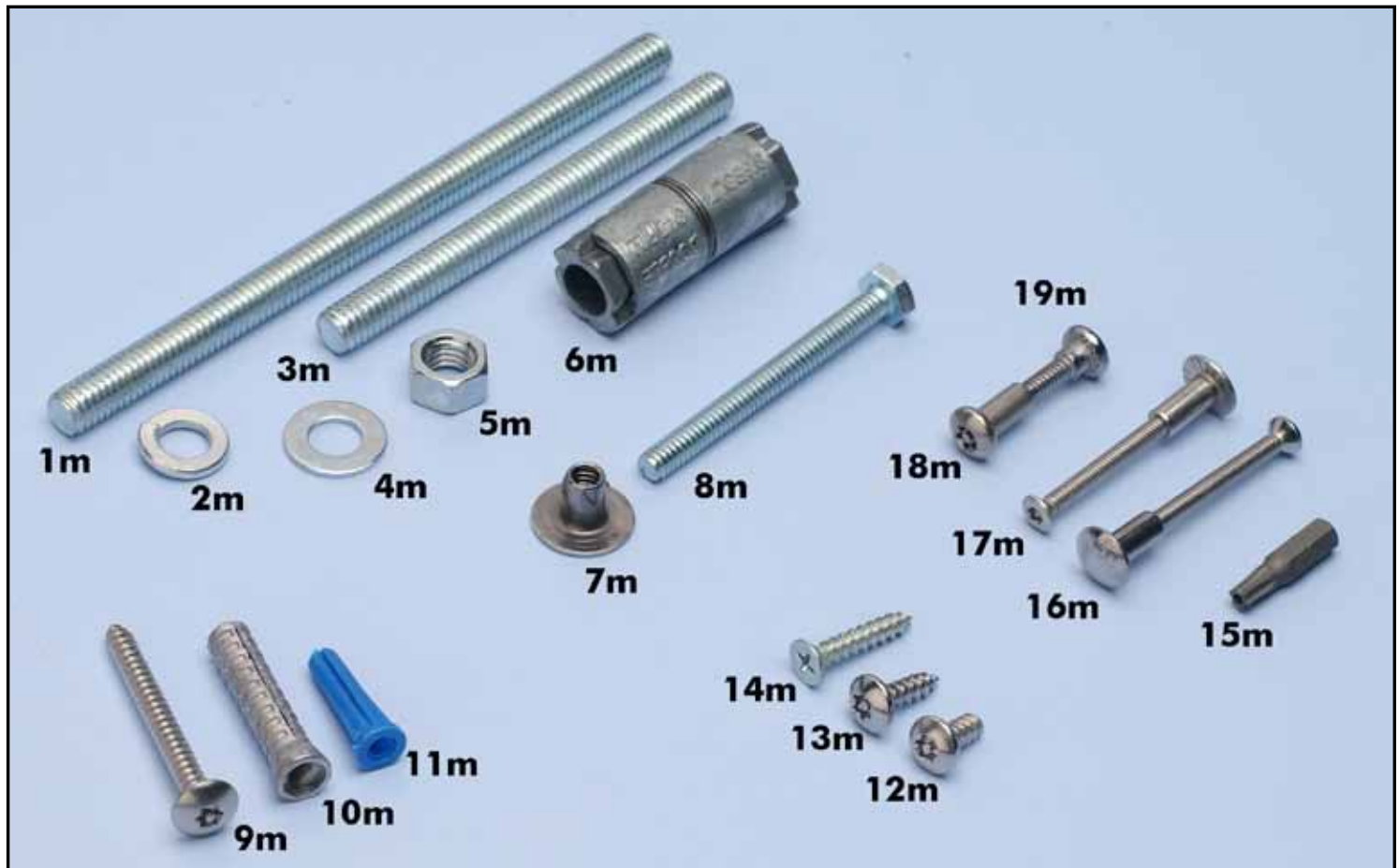
ITEM #	DESCRIPTION
1k	Inswing and Outswing Stainless Steel Continuous Camed Hinge 54", with 0° or 20° cam hinge
2k	U Bracket available in 1/2", 3/4" and 1" by 54 1/2"
3k	F Bracket available in 1/2", 3/4", 1" and 1 1/4" by 54 1/2"
4k	T Bracket available in 1/2", 3/4" and 1" by 54 1/2"
5k	F Bracket Vinyl Plastic 1"x 54"
6k	T Bracket Vinyl Plastic 1" x 54"

Aluminum Miscellaneous Hardware

ITEM #	DESCRIPTION
1l	Aluminum Continuous Adjustable Spring Tension Hinge 54" with cover plates
2l	Angles available in 1/2", 1" and 1 1/2"
3l	Square Tube 1 1/4"
4l	Length Headrail available in 3/4", 1" and 1 1/4"
5l	U Bracket available in 1/2", 3/4" and 1" by 54 1/2"
6l	F Bracket available in 1/2", 3/4", 1" and 1 1/4" by 54 1/2"
7l	T Bracket available in 1/2", 3/4" and 1" by 54 1/2"
8l	Post Shoe 1 1/4" Chrome
9l	1 1/4" Post End Cap
10l	End plug for HeadRail available in 3/4", 1" and 1 1/4"
11l	Chrome Bead Hook (for showers)

HARDWARE

Fasteners



Item #	Description	Item Code
Ceiling Hung		
1m	Threaded Rod	439-87405
2m	Washer	439-CH WASHER
5m	Nut	439-TR NUT
Floor Mounted		
3m	Threaded Rod	439-87435
4m	Washer	439-WASHER 5/16
5m	Nut	439-TR NUT
6m	Rawl	439-RAWL
7m	Nut Pro	439-T NUT PRO
8m	Tap	439-TAP 1-4

Item	Description	Phenolic Core		Aluminum	High Pressure Laminate			Chrome Plated Zamac		
		1/2"	3/4"	1"	7/8"	1"	1-1/4"	1"	7/8"	1-1/4"
9m	#12 x2" Anchor Screw	439-92020						439-91913		
10m	Lead Anchors	439-9117						439-9117		
11m	Plastic Anchors	439-9106						439-9106		
12m	#12 x7/16" SS Blunt Pt. Screw	439-91530								
13m	#10 x1" SS Tap Screw	N/A	N/A	439-90969				439-91064		
14m	#10 x1" SS Tap/Phillip Screw	N/A	N/A	439-91154 (ss six lobe)				439-91114 (Phillips)		
15m	Security Six Lobe Drive Bit	439- T20 / 439-T27								
16m	#8-32 Unslotted Barrel Nut	439-9870						439-9864		
17m	#8-32 Six Lobe Oval head	N/A	439-88430	439-88289	N/A	439-88440	439-88464	439-88440		439-88464
18m	#10-24 Barrel Nut	439-88310	439-88310	439-88320	439-88320			439-88314		
19m	#10-24 Shoulder Screw	439-88330	439-88350	439-88360	439-88350	439-88360		439-88364	439-88344	439-88364
			439-88340			439-88390				

CARE AND CLEANING

High Pressure Decorative Laminate

Laminate surfaces can be cleaned with a mild liquid soap or an all-purpose cleaner. Be sure to wipe and dry the finish after cleaning. Do not hose down or wet down high-pressure laminate partition systems. Do not use abrasive cleaners, rough scouring pads or steel wool to clean laminate surfaces. Acid and alkaline based solutions such as drain cleaners, chlorine bleach and metal cleaners will permanently damage laminates and should not be allowed to come into contact with laminate surfaces. Accidental spills should be wiped and entire area rinsed immediately after the spill occurs.

Although laminate surfaces are extremely durable, you may want to add some extra protection. Use self-cleaning waxes available at your local supermarket to provide a protective film on laminate clad surfaces. These products are gentle and if used according to the directions on the package, can be used regularly with no need for stripping.

While laminate surfaces are impervious to normal wear and tear, they can be damaged if they are subjected to extraordinary abuse. Gouging can result in scratching and cracking. Sliding sharp objects across laminate surfaces may cause accelerated wear and scratching.

Cleaning the Surface

Matte and Suede Finishes - Use a soft damp cloth with mild liquid soap or all-purpose cleaner.

Textured Finishes - Use a nylon scrub brush with all-purpose cleaner or mild liquid detergent diluted with water. Rinse with water and wipe with a soft dry cloth.

High-Gloss Finishes - Use a soft damp cloth with mild liquid soap or an all-purpose cleaner. Use a mild glass cleaner with a soft dry cloth to eliminate any additional smears and streaks.

Certain substances require special cleaning techniques and materials. Here are recommendations for the most common problems:

Residual Glue - Use a soft dry cloth with an adhesive solvent.

Paint and varnish - Use a soft dry cloth and a solvent or paint remover to remove oil-based paint and varnish. Water based paints can be removed with glass cleaner or paint remover on a soft dry cloth.

Stains - Laminate surfaces will resist most stains, however some substances can cause permanent or semi-permanent discoloring. The visual impact or stains caused by hair dyes, laundry blueing, and pharmaceutical compounds can be reduced by blotting the area quickly with a soft dry cloth slightly dampened with diluted chlorine bleach. Afterwards, immediately rinse the area with water to remove any remaining bleach.

Discoloration from wood stains, indelible ink, or newsprint can be faded by applying full strength Pine Sol liquid cleaner or mild all-purpose stain cleaner. Allow the cleaner to draw out the stain for a few minutes, then blot with a soft cloth and rinse with water.

Solid Plastic Polyethylene

To clean solid plastic toilet partitions, use a mild liquid soap and a damp cloth. Wipe and dry the surfaces to remove most dirt and stains. Gentle cleaning solvents may be used on solid plastic material, such as solutions containing ammonia or 12% bleach; however, be careful not to apply cleaning solvents to the toilet partition hardware, as this will degrade the finish and functionality of the hardware and moving parts over time. Do not use abrasive powders, scouring pads or solutions containing acids, lye or enzymes as these materials may damage the finish and leave unsightly marks on the material.

Solid Phenolic Core

Follow the above guidelines for high pressure laminate as the decorative surface should be treated the same. However, because phenolic systems have a solid water resistant core, these systems can be exposed to water. You may hose down a phenolic system, if necessary. Do not use abrasive cleaners, rough scouring pads or steel wool to clean laminate surfaces.

Powder Coated Baked Enamel Steel

Use a mild liquid soap to clean metal partitions. Be sure to wipe and dry the finish after cleaning.

Do not hose down or wet down steel partition systems. Do not use abrasive cleaners, rough scouring pads or steel wool to clean surfaces. Keep away from acids, cleaners and stains.

CARE AND CLEANING

Stainless Steel

Stainless steel is generally corrosion resistant and will last for many years if properly maintained. A common misconception is that stainless steel will not rust. If exposed to highly corrosive materials for prolonged periods, stainless steel may experience some degree of corrosion. For example, muriatic acid, a hydrochloric acid derivative used on job sites to clean grout between tile, will rust even heavy gauge stainless steel. Take care to keep such materials away from stainless steel partitions. If some contamination occurs, however, clean the surface with kerosene, acetone, or soap and water. Then use a scouring pad or steel wool to vigorously rub the surface, always rubbing with the grain of the material, until it is removed. Then clean with a normal stainless steel cleaner.

Cleaning the Surface

Clean your stainless steel partitions with any oil based stainless steel cleaner on the market. Do not use non-oil based cleaners, since these tend to leave an unattractive film on the surface. Carefully remove excess cleaner so that the oil does not attract dirt and dust. Wipe the surface with the grain of the material to avoid scratching the surface.

Solid Surface

Routine Care

Soapy water or ammonia-based cleaners will remove most dirt and stains from all types of solid surface. Be careful not to apply cleaning solvents to the toilet partition hardware, as this will degrade the finish and functionality of the hardware and moving parts over time.

Removing Stains and Fixing Scratches

Nicks, scratches and cuts are inevitable with any high-use product, including solid surface. But because the material is solid, it is easy to renew to its original appearance as described below.

Minor damage, including scratches, general or chemical stains, scorchs or burns, and minor impact marks, can be repaired on-site with a light abrasive cleanser and a product such as a green Scotch-Brite® pad.

For heavier damage, light sanding may be necessary. The following steps should be followed:

Identify the extent of the damage and ascertain whether a minor repair will solve the problem. If the damage is minor, try to repair it with an abrasive cleanser or a product such as a Scotch-Brite® pad. If the above step is unsuccessful, hand-sand with 400-grit wet and dry paper. To minimize dust, wet the surface before starting. If this is unsuccessful, use an electric sander and heavier-grit paper. Always make provisions to control dust. If this, too, is unsuccessful, you may need to consult a professional for other repair options.





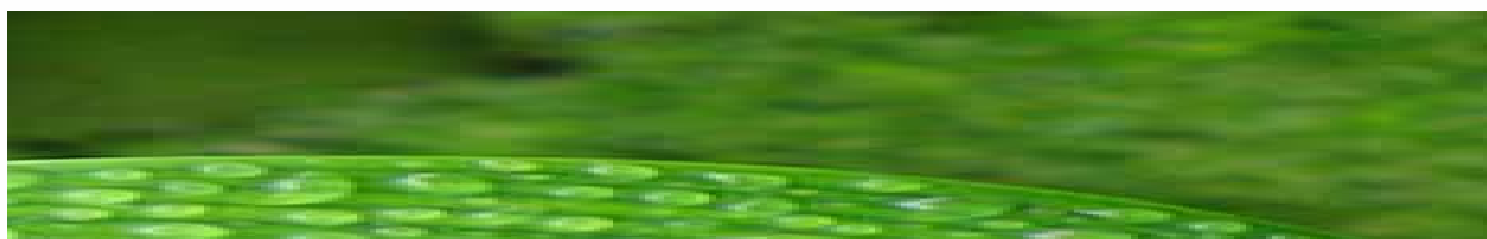
LEED CERTIFICATION

OUR RESPONSIBILITY

At AMPCO®, we know it's our responsibility to promote sustainable building products. We are committed to protecting our natural resources.

As part of our effort to support conservation and green buildings, we would like to provide the architects, designers, builders and owners with relevant information about our products.

We are dedicated to ongoing awareness and committed to exploring new sustainable solutions for our industry, the community and our future.



INTRODUCTION

Buildings fundamentally impact people's lives and the health of the planet. In the United States, buildings use one-third of our total energy, two-thirds of our electricity, one-eighth of our water, and transform land that provides valuable ecological resources. Since the LEED Green Building Rating System for New Construction was first published in 1999, it has been helping professionals across the country to improve the quality of our buildings and their impact on the environment.

As the green building sector grows exponentially, more and more building professionals, owners, and operators are seeing the benefits of green building and LEED certification. Green design not only makes a positive impact on public health and the environment, it also reduces operating costs, enhances building and organizational marketability, potentially increases occupant productivity, and helps create a sustainable community.

WHAT IS LEED?

The Leadership in Energy and Environmental Design (LEED) Green Building Rating System™ encourages and accelerates global adoption of sustainable green building and development practices through the creation and implementation of universally understood and accepted tools and performance criteria. LEED is a third-party certification program and the nationally accepted benchmark for the design, construction and operation of high performance green buildings. LEED promotes a whole-building approach to sustainability by recognizing performances in five key areas of human and environmental health: sustainable site development, water savings, energy efficiency, materials selection and indoor environmental quality.

WHY CERTIFY?

- Be recognized for your commitment to environmental issues in your community, your organization (including stockholders), and your industry
- Receive third party validation of achievement
- Qualify for a growing array of state & local government initiatives
- Receive marketing exposure through USGBC Web site, Greenbuild conference, case studies, and media announcements

AMPCO offers a wide range of products that contribute to the LEED certification program.





LEED CERTIFICATION

HIGH PRESSURE LAMINATE

RECYCLED CONTENT MR 4.0 (1-2 points)	Pre-Consumer: Formica 69% Wilsonart 71%	Post-Consumer: Formica 2% Wilsonart 5%	Total Recycled Content Formica 71% Wilsonart 76%
LOCAL AND REGIONAL MATERIALS MR 5.0 (1-2 points)	Manufactured: Miami, FL Sanger, TX Morristown, TN Auburn, WA	Recovered: <u>Formica:</u> Cincinnati, OH <u>Wilsonart:</u> Temple, TX and Asheville, NC <u>Particleboard:</u> Adel, GA <u>Hardware:</u> Sanger, TX	
RENEWABLE RESOURCES MR 6.0 (1 point)	Wilsonart		
LOW EMITTING MATERIAL IEQ 4.4 (1 point)	Yes		

PHENOLIC CORE AND EVERGREEN (COLOR THROUGH)

RECYCLED CONTENT MR 4.0 (1-2 points)	Pre-Consumer: Formica/Evergreen*A 10% Wilsonart/Evergreen*B 0%	Post-Consumer: Formica/Evergreen*A 5% Wilsonart/Evergreen*B 22%	Total Recycled Content Formica/Evergreen*A 15% Wilsonart/Evergreen*B 22%
LOCAL AND REGIONAL MATERIALS MR 5.0 (1-2 points)	Manufactured: Miami, FL (All Phenolic, Evergreen *A and *B) Sanger, TX (Phenolic Only) Morristown, TN (All Evergreen and All Phenolic) Auburn, WA (Phenolic Only)	Recovered: <u>Formica/Evergreen*A:</u> Cincinnati, OH <u>Wilsonart/Evergreen*B:</u> Temple, TX and Asheville, NC <u>Hardware:</u> Sanger, TX *For all other Evergreen colors please contact us for more information.	
RENEWABLE RESOURCES MR 6.0 (1 point)	Wilsonart		
LOW EMITTING MATERIAL IEQ 4.4 (1 point)	Yes		

SOLID PLASTIC (HDPE)

CONSTRUCTION WASTE MANAGEMENT MR 2.0 (1 point)	Yes		
RECYCLED CONTENT MR 4.0 (1-2 points)	Pre-Consumer: Standard 6% (Only some colors) Special 6% (Only some colors)	Post-Consumer: Standard 34% (Only some colors) Special 91% (Only Some Colors)	Total Recycled Content Standard 40% Special 97%
LOCAL AND REGIONAL MATERIALS MR 5.0 (1-2 points)	Manufactured: Miami, FL Sanger, TX Morristown, TN Auburn, WA	Recovered: <u>Plastic:</u> Hazelton, PA (except Hunter and Frost) <u>Plastic:</u> Archbald, PA (Hunter and Frost) <u>Hardware:</u> Sanger, TX *Applies for certain colors, please contact us for more information.	

POWDER COATED STEEL

CONSTRUCTION WASTE MANAGEMENT MR 2.0 (1 point)	Yes		
RECYCLED CONTENT MR 4.0 (1-2 points)	Pre-Consumer: 30%	Post-Consumer: 49%	Total Recycled Content 79%
LOCAL AND REGIONAL MATERIALS MR 5.0 (1-2 points)	Manufactured: Sanger, TX	Recovered: <u>Galvanized Steel:</u> Dallas, TX <u>Honeycomb:</u> Gurnee, IL <u>Hardware:</u> Sanger, TX	
LOW EMITTING MATERIAL IEQ 4.4 (1 point)	Yes		



STAINLESS STEEL

CONSTRUCTION WASTE MANAGEMENT MR 2.0 (1 point)	Yes		
RECYCLED CONTENT MR 4.0 (1-2 points)	Pre-Consumer: 3%	Post-Consumer: 67%	Total Recycled Content 70%
LOCAL AND REGIONAL MATERIALS MR 5.0 (1-2 points)	Manufactured: Sanger, TX	Recovered: Stainless Steel: Garland, TX Honeycomb: Gurnee, IL Hardware: Sanger, TX	
LOW EMITTING MATERIAL IEQ 4.4 (1 point)	Yes		

SOLID SURFACE

CONSTRUCTION WASTE MANAGEMENT MR 3.0 (1 point)	Yes		
MATERIAL REUSE MR 2.0 (1 point)	Yes		
RECYCLED CONTENT MR 4.0 (1-2 points)	Pre-Consumer: Standard 10% Formica 5% Corian 10%	Post-Consumer: Standard 3% Formica 3% Corian 3%	Total Recycled Content Standard 13% Formica 8% Corian 13%
LOCAL AND REGIONAL MATERIALS MR 5.0 (1-2 points)	Manufactured: Miami, FL	Recovered: <u>Ampco Standard:</u> Madison, WI <u>Formica:</u> Baltimore, MD <u>Corian:</u> Buffalo, NY <u>Hardware:</u> Sanger, TX	

SOLID SURFACE VENEER

MATERIAL REUSE MR 2.0 (1 point)	Yes		
RECYCLED CONTENT MR 4.0 (1-2 points)	Pre-Consumer: 72%	Post-Consumer: 5%	Total Recycled Content 77%
LOCAL AND REGIONAL MATERIALS MR 5.0 (1-2 points)	Manufactured: Miami, FL	Recovered: <u>Particleboard:</u> Adel, GA <u>Solid Surface:</u> Florence, KY <u>Hardware:</u> Sanger, TX	

NOTES:

- High Pressure Laminate Partitions are assembled with three materials: 75% Particleboard, 15% Laminate and 10% Zamac Hardware.
- EQ 4.4 Credit only complies if no added formaldehyde resin is used in particleboard which is available ONLY UPON REQUEST and may carry an upcharge.
- Phenolic Core and Evergreen Partitions are assembled with two materials: 85% phenolic core and 15% Stainless Steel Hardware
- Phenolic Core with PVC edging Partitions is assembled with 3 materials: 84% Phenolic core, 15% Stainless Steel Hardware and 1% PVC tape.
- Standard Solid Plastic (HDPE) recycled content only applies for: Marine Blue, Black, Black Confetti, Burgundy, Khaki and Ash Grey
- 100% Post-Consumer Solid Plastic is available ONLY UPON REQUEST and may carry an upcharge. Check with Factory for color availability.
- Evergreen A applies for Gunmetal Grey and Ebony.
- Evergreen B applies to Allspice. For other color information please contact marketing department.
- All Calculations include standard hardware. For specific hardware calculations please contact the Marketing Department at marketing@ampco.com
- Baked Enamel Partitions are assembled with three materials: 85% Galvanized Steel, 5% Honeycomb and 10% Zamac Hardware
- Stainless Steel Partitions are assembled with three materials: 85% Stainless Steel, 5% Honeycomb and 10% Zamac Hardware.
- Solid Surface Partitions are assembled with two materials: 90% Solid Surface and 10% Stainless Steel Hardware.
- Solid Surface Veneer Partitions are assembled with three materials: 60% Particleboard, 25% Solid Surface, 15% Hardware.

*All calculations include standard hardware. For specific hardware calculations please contact the Marketing Department at marketing@ampco.com

*Due to constant updates on information provided to us by our vendors, please check our website to confirm the latest information about our products and LEED.

* For information visit our website at www.ampco.com or email us at info@ampco.com. You can also visit www.usgbc.org for LEED Credit Certification.

INSTALLATIONS



Educational Facilities
Picture provided by RTI Supply

High Pressure Laminate



Gyms
Picture provided by RTI Supply

Stainless Steel



Hotels

High Pressure Laminate



Casinos

Phenolic Core



Recreational Facilities

Solid Phenolic Core



Euroline

Solid Surface Veneer

Ampco Products LLC

FLORIDA PLANT

11400 NW 36th Avenue
Miami, FL 33167
Tel: 305/821-5700
Fax: 305/507-1414
florida@ampco.com

TEXAS PLANT

201 Railroad Avenue
Sanger, TX 76266
Tel: 940/458-7401
Fax: 940/458-5307
texas@ampco.com

TENNESSEE PLANT

1200 Violet Street
Morristown, Tennessee 37814
Tel: 423/586-3993
Fax: 423/586-3637
tennessee@ampco.com

WASHINGTON PLANT

4520 B Street NW, Suite B
Auburn, WA 98001
Tel: 253/852-5900
Fax: 253/856-2859
washington@ampco.com



We manufacture Toilet Partitions and Architectural Doors.

Toilet Partition are available in:

High Pressure Laminate
Solid Phenolic Core
Solid Phenolic Core with PVC edging
Evergreen (Color Through Phenolic)
Solid Plastic (HDPE)

Powder Coated Steel
Stainless Steel
Solid Surface
Solid Surface Veneer
Euroline