

# The Da-Lite Difference.



FRONT PROJECTION SCREENS

**DA-LITE**<sup>®</sup>

SCREEN COMPANY



## TABLE OF CONTENTS

Model	Type	Concealed-Without Doors	Concealed-With Doors	Ceiling	Wall	Concealed-or Surface Floor Mount	Page
Tensioned Advantage® Deluxe Electrol®	Electric		•				4
Tensioned Large Advantage® Deluxe Electrol®	Electric		•				5
Advantage® Deluxe Electrol®	Electric		•				6
Large Advantage® Deluxe Electrol®	Electric		•				7
Tensioned Advantage® Electrol®	Electric	•					8
Tensioned Large Advantage® Electrol®	Electric	•					9
Advantage® Electrol®	Electric	•					10
Large Advantage® Electrol®	Electric	•					11
Boardroom Electrol®	Electric		•				12
Tensioned Professional Electrol®	Electric	•		•	•		13
Professional Electrol®	Electric	•		•	•		14
Studio Electrol®	Electric	•		•	•		15
Tensioned Contour® Electrol®	Electric			•	•		16
Contour® Electrol®	Electric			•	•		17
Tensioned Cosmopolitan® Electrol®	Electric			•	•		18
Tensioned Large Cosmopolitan® Electrol®	Electric			•	•		19
Cosmopolitan® Electrol®	Electric			•	•		20
Large Cosmopolitan® Electrol®	Electric			•	•		21
Designer Contour® Electrol®	Electric			•	•		22
Designer Contour® Electrol® with Infrared	Electric			•	•		23
Designer Da-Tab Electrol®	Electric			•	•		24
Designer Electrol®	Electric			•	•		25
Tensioned Executive Electrol®	Electric		•				26
Executive Electrol®	Electric		•				27
Senior Electrol®	Electric	•		•	•		28
Ascender® Electrol®	Electric					•	29
Tensioned Horizon Electrol®	Electric	•					30
Horizon Electrol®	Electric	•					31
Tensioned Dual Masking Electrol®	Electric	•					32
Dual Masking Electrol®	Electric	•					33
Motorized Scenic Roller Screen	Electric				•		34
Arena Electrol®	Electric	•		•	•		35
Mounts, Accessories and Hardware	N/A						36-40
Cinema Contour®	Fixed				•		41
Da-Snap	Fixed				•		42
Imager	Fixed				•		43
Multi-Mask Imager	Fixed				•		44
Pro Imager Vertical Mask	Electric				•		45
Pro Imager Horizontal Mask	Electric				•		45
Advantage® Manual With CSR	Manual	•					46
Model C	Manual			•	•		47



## SPECIFYING DA-LITE FRONT PROJECTION SCREENS

- 1 Select the right screen size and format:
  - Screen height should be approximately equal to  $\frac{1}{3}$  the distance from the screen to the last row of seats, allowing text to be read and detail to be seen in the projected image.
  - Screen width will be determined by desired format.
  - The bottom of the screen should be a minimum of 4' above the audience floor, allowing those seated toward the rear to see the screen.
- 2 Select the right screen surface. (All surfaces are flame retardant and mildew resistant.)
- 3 Select the right screen type. Use chart on page 2.

FRONT PROJECTION SCREEN SURFACES  
SUPPORTED FIBERGLASS**Matte White** 🌀:

- The most versatile and uniform material for front projection.
- Gives precise definition and reproduction of color or black and white.
- Enables unlimited viewing angles and perfect uniformity.
- Washable with mild soap and water.
- Gain: 1.0, Viewing Angle: 60°

**High Contrast Matte White** 🌀:

- Designed for moderate output DLP and LCD projectors.
- Gray base material and reflective top surface provide very good black levels without sacrificing white level output.
- Washable with mild soap and water.
- Gain: 1.1, Viewing Angle: 50°

**Video Spectra 1.5** 🌀:

- Ideal for graphics, data and video display.
- Special pearlescent coated surface provides optimal viewing angle with moderate gain.
- Washable with mild soap and water.
- Available in selected sizes and video formats.
- Ideal for applications where the projector is ceiling mounted.
- Gain: 1.5, Viewing Angle: 30°

**Silver Matte** 🌀:

- Silver surface especially designed for use with 3-D projection.
- Polarization of projected image is preserved by the unique properties of the screen surface.
- Gain: 1.3, Viewing Angle: 30°

**High Power** 🌀:

- Smooth surface provides highest gain of any screen.
- Washable with mild soap and water.
- Ideal for applications where the projector is positioned below screen center.
- Gain: 2.8, Viewing Angle: 30°

## FLEXIBLE FABRIC SCREENS

Available on tensioned and fixed wall screens.

**Da-Mat** 🌀:

- White smooth finish vinyl for precise definition and the reproduction of color or black and white.
- Provides a wide viewing angle without loss of resolution.
- Washable with mild soap and water.
- Gain: 1.0, Viewing Angle: 60°

**High Contrast Da-Mat** 🌀:

- Smooth, gray, vinyl finish surface for high output LCD and DLP projectors.
- Surface improves contrast appearance by lowering black levels.
- Washable with mild soap and water.
- Gain: 0.8, Viewing Angle: 45°

**Cinema Vision** 🌀:

- A screen surface that provides a bright uniform image with no color shift no matter what angle you view the image.
- Washable with mild soap and water.
- Gain: 1.3, Viewing Angle: 45°

**High Contrast Cinema Vision** 🌀:

- Smooth, light gray, vinyl surface for moderate output LCD and DLP projectors.
- Surface improves contrast appearance by lowering black levels.
- Washable with mild soap and water.
- Gain: 1.1, Viewing Angle: 50°

**Pearlescent** 🌀:

- Smooth Pearlescent coating produces reflectivity and brilliance without loss of image sharpness or registration.
- Ideal for applications where the projector is ceiling mounted.
- Washable with mild soap and water.
- Gain: 1.5, Viewing Angle: 40°

**Audio Vision** 🌀:

- This acoustically transparent, front projection fabric allows for the center channel speaker to be placed directly behind the screen.
- The fabric allows the speaker to transmit the full range and brilliance of an original soundtrack while providing maximum clarity.
- Gain: 1.0, Viewing Angle: 50°

**High Contrast Audio Vision** 🌀:

- Same optical characteristics of High Contrast Da-Mat with the acoustic transparency of Audio Vision.
- Gain: 0.8, Viewing Angle: 45°

**High Contrast Cinema Perf** 🌀:

- Same optical characteristics of High Contrast Cinema Vision with the acoustic transparency of Audio Vision.
- Gain: 1.1, Viewing Angle: 50°

**3D Virtual Grey** 🌀:

- Designed specifically for 3D front projection systems, 3D Virtual Grey is a flexible vinyl projection fabric that retains 99 percent of polarized light. Other characteristics include the ability to maintain high extinction values, virtually eliminate ghosting or crosstalk common with stereoscopic 3D projection and excellent image contrast. 3D Virtual Grey offers a 1.3 gain, which is compatible with low levels of ambient light.
- Gain: 1.85, Viewing Angle: 11°

DA-LITE'S TENSIONED ELECTRIC AND FIXED WALL  
SCREENS ARE ALSO AVAILABLE WITH REAR  
PROJECTION MATERIALS.REAR PROJECTION SCREEN SURFACES  
FLEXIBLE FABRIC SCREENS**Da-Tex** 🌀:

- A translucent, neutral gray vinyl fabric that allows rear projection in applications where a rigid acrylic or glass screen are not possible. This specially designed gray vinyl surface offers the same high transmission and low reflectance values as a rigid rear projection screen for optimal viewing. It yields excellent color rendition, image contrast and a moderately wide viewing angle. Ideally suited for both lace and grommet and snap button type screens used in portable installations.
- Gain: 1.3, Viewing Angle: 30°

**High Contrast Da-Tex** 🌀:

- High Contrast Da-Tex® is a unity gain rear projection surface with a specially designed dark gray tint and is formulated to provide lower black levels for today's high output projectors. This surface features optical characteristics similar to rigid rear projection screens. Ideally suited for both lace and grommet and snap button screens used in portable applications.
- Gain: 1.0, Viewing Angle: 40°

**Dual Vision** 🌀:

- Unity gain flexible projection fabric capable of both front and rear projection when ambient light is controlled.
- Washable with mild soap and water.
- Gain: 1.0, Viewing Angle: 50°

**Ultra Wide Angle** 🌀:

- Ultra Wide Angle is formulated for applications where exceptionally wide viewing angles are desired and ambient light is controlled. Based on its ability to diffuse light uniformly, Ultra Wide Angle fabric is ideal for installations utilizing multiple projection edge blending or wide format screens with short focal length projection lenses. By virtue of its characteristics, Ultra Wide Angle fabric dramatically reduces the potential of hot spotting.
- Gain: 0.7, Viewing Angle: 80°

**3D Virtual Black** 🌀:

- 3D Virtual Black® is a flexible vinyl rear projection fabric that retains 99 percent polarization, thereby maintaining a high fidelity 3D image and virtually eliminating all image ghosting. The black surface finish provides excellent image contrast and its 3.0 gain offers exceptionally vivid images even in ambient light conditions.
- Gain: 3.0, Viewing Angle: 10°



## TENSIONED ADVANTAGE® DELUXE ELECTROL®

Concealed with Closure Doors  
Electric Projection Screen

When ordering, make appropriate selections:

1. Select size from charts below.

2. Select viewing surface:

- Da-Mat®
- High Contrast Da-Mat®
- Cinema Vision®
- High Contrast Cinema Vision®
- Pearlescent®
- Audio Vision®
- High Contrast Audio Vision®
- High Contrast Cinema Perf®
- Da-Tex® (Rear)
- Dual Vision®

GREENGUARD® and GREENGUARD® Children and Schools Certified.

3. Options:

- Wireless Remote Control for LVC.
- Radio Frequency Remote
- Radio Frequency Range Extender available
- Infrared Remote
- Key Locking Cover Plate for 120V Switch or LVC.
- 220/240 Volt (50 Hz) motor.
- Video Projector Interface - built-in.
- SCB-100 RS-232 Serial Control Board - external.
- NET-100 Ethernet-Serial Adapter
- SCB-100 RS-232 Serial Control Board - built-in. Electrical connections will be on right end of screen case on units with built-in SCB-100.
- NET-100 Ethernet-Serial Adapter
- SCB-200 RS-232 Serial Control Board - built-in. Electrical connections will be on right end of screen case on units with built-in SCB-200.
- NET-200 Ethernet-Serial Adapter
- WC-200 Wall Controller
- IR-200 Infrared Remote

All viewing surfaces will be seamless. Audio Vision, High Contrast Audio Vision and High Contrast Cinema Perf available in sizes up to 87" x 116" in Video Format and 78" x 139" in HDTV Format.

All viewing surfaces are standard with black backing except Da-Tex® and Dual Vision.

Detailed dimensional drawings, wiring diagrams and installation instructions available upon request. Specifications subject to change without notice.

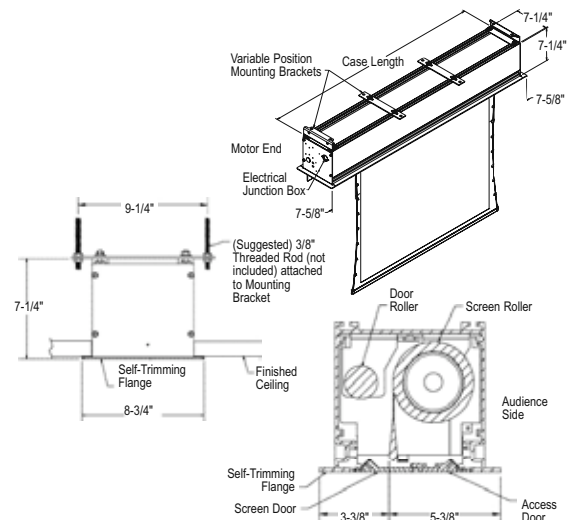


- Designed with the installer in mind. You can choose to receive the case and fabric together or separately to prevent fabric damage during the "rough-in" stages of construction.
- Concealed in the ceiling with closure doors.
- UL Plenum rated case.
- Tab guide cable system holds screen surface flat.

## SUGGESTED SPECIFICATIONS:

\_\_\_\_\_ projection screen(s), \_\_\_\_\_ (H) x \_\_\_\_\_ (W).

The Tensioned Advantage® Deluxe screen shall have two motors, one to operate door and one to operate screen. Door motor electrically operated 120 volt (60 Hz) not more than 1.2 amp. Shall have motor mounted inside the roller, to be three wire with ground, quick reversal type, oiled for life, with automatic thermal overload cutout, integral gears, capacitor and an electric brake to prevent coasting. To have pre-set but adjustable limit switches to automatically stop fabric door in the "down" position. The door will lift to the closed position where a micro switch shall cut off the electrical current to the door motor. The roller to be of rigid aluminum. Screen motor is electrically operated 120 volt (60 Hz) not more than 2.4 amp. Shall have motor mounted inside the roller, to be three wire with ground quick reversal type, oiled for life, with automatic thermal overload cutout, integral gears, capacitor and an electric brake to prevent coasting. To have pre-set but adjustable limit switches to automatically stop picture surface in the "up" and "down" positions. The roller to be of rigid metal. Screen fabric to be seamless, flame retardant and mildew resistant vinyl, with black masking borders standard. Each side of the fabric to have tab guide cable system to maintain even lateral tension and hold surface flat. Custom slat bar with added weight maintains vertical tension on the screen surface. The ends of the slat to be protected by heavy duty plastic caps enclosing a preset adjustable mechanism for screen tensioning. Case shall be a white powder coated extruded aluminum. Bottom of case to be self-trimming with a built-in flange around the bottom of the case. A section of the bottom of the case shall be an aluminum door equipped with hinges so that it opens and closes automatically with the lowering and raising of the picture surface. The balance of the bottom of the case shall be a second hinged aluminum door with manual opening to provide access. Hinges shall be mounted in a concealed way. Junction box shall be internally integrated into the housing making it possible to install the housing and wire to the building's electrical system during construction. The junction box shall contain a quick connect connector that is mounted in the housing for easy plug-in connection to the motorized fabric and roller assembly. The motorized fabric and roller assembly to be installed in the case at the factory or at a later time at the job site. To be complete with integrated low voltage control unit and three position control switch and cover plate. Suitable for use in environmental air space in accordance with section 300-22 (c) of the National Electric Code, and sections 2-128, 12-010 (3) and 12-100 of the Canadian Electrical Code, part 1, CSA C22.1. Screen to be listed by Underwriters' Laboratories.



## 4:3 VIDEO FORMAT DIMENSIONS

Viewing Area H x W	Nominal Diagonal	Overall Case Length	Approx. Shipping Wt. Lbs.
43" x 57"	72"	79 1/4"	102
50" x 67"	84"	90 1/4"	114
60" x 80"	100"	104 1/4"	125
69" x 92"	120"	118 1/4"	148
87" x 116"	150"	145 1/4"	170
108" x 144"	180"	170 1/4"	189
120" x 160"	200"	187 1/4"	203

## 16:9 HDTV FORMAT DIMENSIONS

Viewing Area H x W	Nominal Diagonal	Overall Case Length	Approx. Shipping Wt. Lbs.
45" x 80"	92"	102 3/4"	125
52" x 92"	106"	115 1/4"	140
54" x 96"	110"	119 3/4"	145
58" x 104"	119"	128 1/4"	150
65" x 116"	133"	141 1/4"	163
78" x 139"	159"	166 1/4"	188
90" x 160"	184"	184"	203

## 16:10 FORMAT DIMENSIONS

Viewing Area H x W	Nominal Diagonal	Overall Case Length	Approx. Shipping Wt. Lbs.
50" x 80"	94"	103 3/4"	125
60" x 96"	113"	120 3/4"	145
69" x 110"	130"	134 3/4"	157
87" x 139"	164"	163 1/4"	188

## SQUARE FORMAT DIMENSIONS

Sizes H x W	Overall Case Length	Approx. Shipping Wt. Lbs.
50" x 50"	73 1/4"	93
60" x 60"	84 1/4"	104
70" x 70"	95 3/4"	116
84" x 84"	112 1/4"	125
6' x 8'	122 1/4"	140
8' x 8'	125 3/4"	148
7' x 9'	136 1/4"	155
9' x 9'	134 3/4"	159
8' x 10'	149 3/4"	165
10' x 10'	146 3/4"	168
9' x 12'	170 3/4"	189
12' x 12'	175 1/4"	194

Overall case length dimensions  $\pm 1/4$ ".

Note: Custom formats and sizes available upon request.

Note: All sizes come standard with 12" black drop at top.

Note: Electrical connections will be on right end of screen case on units with built-in SCB-100 or SCB-200.





## TENSIONED LARGE ADVANTAGE® DELUXE ELECTROL®

Concealed with Closure Doors  
Electric Projection Screen

When ordering, make appropriate selections:

1. Select size from charts below.
2. Select viewing surface:
  - Da-Mat®
  - High Contrast Da-Mat®
  - Cinema Vision®
  - High Contrast Cinema Vision®
  - Pearlescent®
  - Da-Tex® (Rear)
  - Dual Vision®
  - GREENGUARD® and GREENGUARD® Children and Schools Certified.
3. Options:
  - Wireless Remote Control for LVC.
  - Radio Frequency Remote
  - Radio Frequency Range Extender available
  - Infrared Remote
  - Key Locking Cover Plate for 120V Switch or LVC.
  - 220/240 Volt (50 Hz) motor.

All viewing surfaces will be seamless.  
All viewing surfaces are standard with black backing except Da-Tex® and Dual Vision.

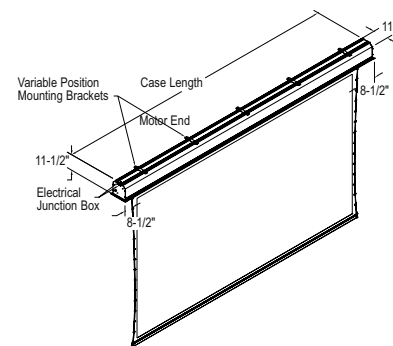
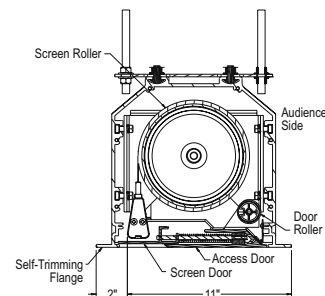
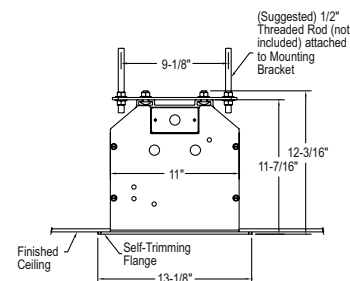
Detailed dimensional drawings, wiring diagrams and installation instructions available upon request. Specifications subject to change without notice.



- Designed with the installer in mind. You can choose to receive the case and fabric together or separately to prevent fabric damage during the "rough-in" stages of construction.
- Concealed in the ceiling with closure doors.
- UL Plenum rated case.
- Tab guide cable system holds screen surface flat.

## SUGGESTED SPECIFICATIONS:

\_\_\_\_\_ projection screen(s), \_\_\_\_\_ (H) x \_\_\_\_\_ (W).  
The Tensioned Advantage® Deluxe screen shall have two motors, one to operate door and one to operate screen. Door motor electrically operated 120 volt (60 Hz) not more than 1.2 amp. Shall have motor mounted inside the roller, to be three wire with ground, quick reversal type, oiled for life, with automatic thermal overload cutout, integral gears, capacitor and an electric brake to prevent coasting. To have pre-set but adjustable limit switches to automatically stop fabric door in the "down" position. The door will lift to the closed position where a micro switch shall cut off the electrical current to the door motor. The roller to be of 1.6" diameter aluminum. Screen motor is electrically operated 120 volt (60 Hz) not more than 2.4 amp. Shall have motor mounted inside the roller, to be three wire with ground quick reversal type, oiled for life, with automatic thermal overload cutout, integral gears, capacitor and an electric brake to prevent coasting. To have pre-set but adjustable limit switches to automatically stop picture surface in the "up" and "down" positions. The fabric roller to be of 4½" diameter (5¼" if 270" diagonal, 275" diagonal, or 298" diagonal) metal. Screen fabric to be seamless, flame retardant and mildew resistant vinyl, with black masking borders standard. Each side of the fabric to have tab guide cable system to maintain even lateral tension and hold surface flat. Custom slat bar with added weight maintains vertical tension on the screen surface. The ends of the slat to be protected by heavy duty plastic caps enclosing a preset adjustable mechanism for screen tensioning. Case shall be a white powder coated extruded aluminum. Bottom of case to be self-trimming with a built-in flange around the bottom of the case. A section of the bottom of the case shall be a retractable aluminum door that opens and closes automatically with the lowering and raising of the picture surface. The balance of the bottom of the case shall be a second hinged aluminum door with manual opening to provide access. Hinges shall be mounted in a concealed way. Junction box shall be internally integrated into the housing making it possible to install the housing and wire to the building's electrical system during construction. The junction box shall contain a quick connect connector that is mounted in the housing for easy plug-in connection to the motorized fabric and roller assembly. The motorized fabric and roller assembly to be installed in the case at the factory or at a later time at the job site. To be complete with integrated low voltage control unit and three position control switch with cover plate. Suitable for use in environmental air space in accordance with section 300-22 (c) of the National Electric Code, and sections 2-128, 12-010 (3) and 12-100 of the Canadian Electrical Code, part 1, CSA C22.1. Screen to be listed by Underwriters' Laboratories.



## 4:3 VIDEO FORMAT DIMENSIONS

Viewing Area H x W	Nominal Diagonal	Overall Case Length	Approx. Shipping Wt. Lbs.
126" x 168"	210"	199¼"	628
132" x 176"	220"	208¼"	655
144" x 192"	240"	225¾"	708
162" x 216"	270"	251¼"	781

## 16:9 HDTV FORMAT DIMENSIONS

Viewing Area H x W	Nominal Diagonal	Overall Case Length	Approx. Shipping Wt. Lbs.
108" x 192"	220"	220¼"	688
121" x 216"	247"	246¾"	764
135" x 240"	275"	272¾"	841
146" x 260"	298"	294¼"	870

## SQUARE FORMAT DIMENSIONS

Sizes H x W	Overall Case Length	Approx. Shipping Wt. Lbs.
10'6" x 14'	203½"	628
14' x 14'	210½"	655
12' x 16'	230"	708

Overall case length dimensions ±¼".

Note: Custom formats and sizes available upon request.

Note: All sizes come standard with 12" black drop at top except 270" diagonal, which has 2".



## ADVANTAGE® DELUXE ELECTROL®

Concealed with Closure Doors  
Electric Projection Screen

When ordering, make appropriate selections:

## 1. Select size from charts below.

## 2. Select viewing surface:

- Matte White
- High Contrast Matte White
- Video Spectra 1.5
- High Power

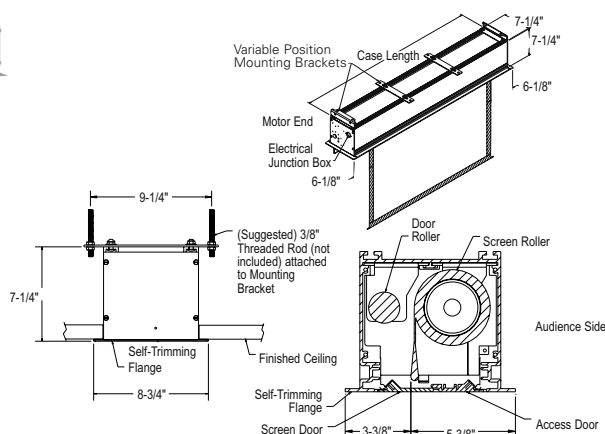
GREENGUARD® and  
GREENGUARD® Children and  
Schools Certified.

## 3. Options:

- Extra Drop available to lower picture area more than normal. Specify total drop at top \_\_\_\_\_ (black or white) or at bottom \_\_\_\_\_ (black or white). 13' maximum total surface height including picture area.
- No borders (Black masking borders standard).
- Wireless Remote Control for LVC.
  - Radio Frequency Remote
  - Radio Frequency Range Extender available
  - Infrared Remote
- Key Locking Cover Plate for 120V Switch or LVC.
- 220/240 Volt (50 Hz) Motor.
- Video Projector Interface - built-in.
- SCB-100 RS-232 Serial Control Board - external.
  - NET-100 Ethernet-Serial Adapter
- SCB-100 RS-232 Serial Control Board - built in. Electrical connections will be on right end of screen case on units with built-in SCB-100.
  - NET-100 Ethernet-Serial Adapter
- SCB-200 RS-232 Serial Control Board - built-in. Electrical connections will be on right end of screen case on units with built-in SCB-200.
  - NET-200 Ethernet-Serial Adapter
  - WC-200 Wall Controller
  - IR-200 Infrared Remote

Detailed dimensional drawings, wiring diagrams and installation instructions available upon request.

Specifications subject to change without notice.



- Designed with the installer in mind. You can choose to receive the case and fabric together or separately to prevent fabric damage during the "rough-in" stages of construction.
- Concealed in the ceiling with closure doors.
- UL Plenum rated case.

## SUGGESTED SPECIFICATIONS:

\_\_\_\_\_ projection screen(s), \_\_\_\_\_ (H) x \_\_\_\_\_ (W).

The Advantage® Deluxe Screen shall have two motors, one to operate door and one to operate screen. Door motor electrically operated 120 volt (60 Hz) not more than 1.2 amp, mounted inside the roller, to be three wire with ground, quick reversal type, oiled for life, with automatic thermal overload cutout, integral gears, capacitor and an electric brake to prevent coasting. To have pre-set but adjustable limit switches to automatically stop fabric door in the "down" position. The door will lift to the closed position where a micro switch shall cut off the electrical current to the door motor. The roller to be of rigid aluminum. Screen motor is electrically operated 120 volt (60 Hz) not more than 2.4 amp, mounted inside the roller, to be three wire with ground quick reversal type, oiled for life, with automatic thermal overload cutout, integral gears, capacitor and an electric brake to prevent coasting. To have pre-set but adjustable limit switches to automatically stop picture surface in the "up" and "down" positions. The roller to be of rigid metal. Screen fabric to be flame retardant and mildew resistant fiberglass with black masking borders standard. Bottom of fabric shall be formed into a pocket holding a metal rod with plastic caps. Case shall be a white powder coated aluminum extrusion. Bottom of case to be self-trimming with a built-in flange around the bottom of the case. A section of the bottom of the case shall be an aluminum door equipped with concealed hinges so that it opens and closes automatically with the lowering and raising of the picture surface.

The balance of the bottom of the case shall be a second hinged aluminum door with manual opening to provide access. Junction box shall be internally integrated into the housing making it possible to install the housing and wire to the building's electrical system during construction. The junction box shall contain a quick connect connector that is mounted in the housing for easy plug-in connection to the motorized fabric and roller assembly. The motorized fabric and roller assembly to be installed in the case at the factory or at a later time at the job site. To be complete with integrated low voltage control unit and three position control switch and cover plate. Suitable for use in environmental air space in accordance with section 300-22 (c) of the National Electric Code, and sections 2-128, 12-010 (3) and 12-100 of the Canadian Electrical Code, part 1, CSA C22.1. Screen to be listed by Underwriters' Laboratories.



Matte White: Horizontal seam required when both dimensions exceed 10'.

High Contrast Matte White: Available in sizes where both dimensions do not exceed 10'.

Video Spectra 1.5: Available in sizes where both dimensions do not exceed 8'.

High Power: Available in sizes up to and including 9' x 12'. Horizontal seam required when both dimensions exceed 6'.

## 4:3 VIDEO FORMAT DIMENSIONS (2" standard black drop at top)

Viewing Area H x W	Nominal Diagonal	Overall Case Length	Approx. Shipping Wt. Lbs.
43" x 57"	72"	72 1/4"	83
50" x 67"	84"	82 1/4"	93
57" x 77"	96"	96 1/4"	108
60" x 80"	100"	96 1/4"	108
69" x 92"	120"	108 1/4"	119
87" x 116"	150"	132 1/4"	144
105" x 140"	180"	156 1/4"	168
120" x 160"	200"	176 1/4"	188

## 16:9 HDTV FORMAT DIMENSIONS (2" standard black drop at top)

Viewing Area H x W	Nominal Diagonal	Overall Case Length	Approx. Shipping Wt. Lbs.
45" x 80"	92"	96 1/4"	108
52" x 92"	106"	108 1/4"	119
54" x 96"	110"	112 1/4"	120
58" x 104"	119"	120 1/4"	122
65" x 116"	133"	132 1/4"	144
78" x 139"	159"	156 1/4"	188
90" x 160"	184"	176 1/4"	188

## 16:10 WIDE FORMAT DIMENSIONS (2" standard black drop at top)

Viewing Area H x W	Nominal Diagonal	Overall Case Length	Approx. Shipping Wt. Lbs.
50" x 80"	94"	96 1/4"	108
60" x 96"	113"	112 1/4"	120
69" x 110"	130"	126 1/4"	133
87" x 139"	164"	156 1/4"	188

## SQUARE FORMAT DIMENSIONS

(screens with ^ have 2" standard black drop at top)

Sizes H x W	Overall Case Length	Approx. Shipping Wt. Lbs.
50" x 50"	62 1/4"	71
60" x 60"	72 1/4"	81
70" x 70"	82 1/4"	92
84" x 84"	96 1/4"	107
6' x 8'^A	108 1/4"	111
8' x 8'	108 1/4"	117
7' x 9'^A	120 1/4"	122
9' x 9'^A	120 1/4"	130
8' x 10'^A	132 1/4"	142
10' x 10'^A	132 1/4"	170
9' x 12'^A	156 1/4"	180
12' x 12'	156 1/4"	200

Overall case length dimensions ± 1/4".

Note: Custom formats and sizes available upon request.

Note: Electrical connections will be on right end of screen case on units with built-in SCB-100 or SCB-200.



## LARGE ADVANTAGE® DELUXE ELECTROL®

Concealed with Closure Doors  
Electric Projection Screen

When ordering, make appropriate selections:

## 1. Select size from charts below.

## 2. Select viewing surface:

- Matte White
- GREENGUARD® and GREENGUARD® Children and Schools Certified.

## 3. Options:

- Extra Drop available to lower picture area more than normal. Specify total drop at top \_\_\_\_\_ (black or white) or at bottom \_\_\_\_\_ (black or white). 22' maximum total surface height including picture area except for 24' wide, where maximum drop is 18'.
- No borders (Black masking borders standard).
- Wireless Remote Control for LVC.
  - Radio Frequency Remote
  - Radio Frequency Range Extender available
  - Infrared Remote
- Key Locking Cover Plate for 120V Switch or LVC.
- 220/240 Volt (50 Hz) Motor.

**Matte White:** Horizontal seam required when both dimensions exceed 16'.

Detailed dimensional drawings, wiring diagrams and installation instructions available upon request.

Specifications subject to change without notice.

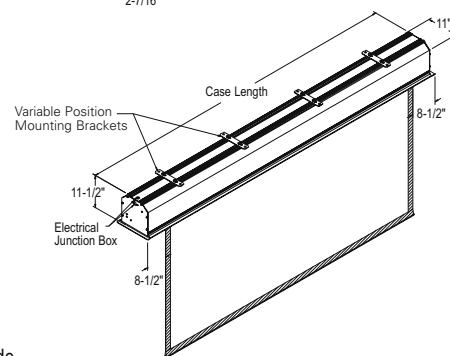
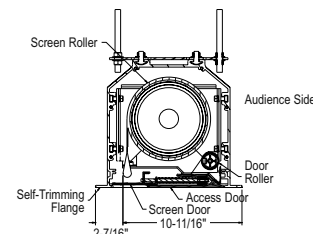
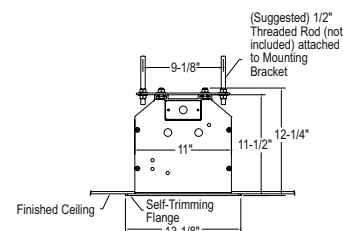


- Large venue motorized screen with automatic closure door.
- Heavy duty aluminum extruded case with white powder coated finish.
- UL Plenum rated case.

## SUGGESTED SPECIFICATIONS:

\_\_\_\_\_ projection screen(s), \_\_\_\_\_ (H) x \_\_\_\_\_ (W).

Screen shall have two motors, one to operate door and one to operate screen. Door motor electrically operated 120 volt (60 Hz) not more than 1.2 amp, mounted inside the roller, to be three wire with ground, quick reversal type, oiled for life, with automatic thermal overload cutout, integral gears, capacitor and an electric brake to prevent coasting. To have pre-set but adjustable limit switches to automatically stop fabric door in the open position. The roller to be of 1.6" diameter aluminum. Screen motor is electrically operated 120 volt (60 Hz) not more than 2.4 amp, mounted inside the roller, to be three wire with ground quick reversal type, oiled for life, with automatic thermal overload cutout, integral gears, capacitor and an electric brake to prevent coasting. To have pre-set but adjustable limit switches to automatically stop picture surface in the "up" and "down" positions. Rigid metal roller, to be at least 5 3/4" in diameter (on screens 14' to 18' wide) or 7" in diameter (on screens where either height or width equal or exceed 20'). Screen fabric to be flame retardant and mildew resistant fiberglass with black masking borders standard. Bottom of fabric shall be formed into a pocket holding a metal rod with plastic caps. Case shall be a white powder coated aluminum extrusion. Bottom of case to be self-trimming with a built-in flange around the bottom of the case. A section of the bottom of the case shall be a retractable aluminum door that opens and closes automatically with the lowering and raising of the picture surface. The balance of the bottom of the case shall be a second aluminum door with manual opening to provide access. Junction box shall be internally integrated into the housing making it possible to install the housing and wire to the building's electrical system during construction. The junction box shall contain a quick connect connector that is mounted in the housing for easy plug-in connection to the motorized fabric and roller assembly. The motorized fabric and roller assembly to be installed in the case at the factory or at a later time at the job site. To be complete with integrated low voltage control unit and three position control switch with cover plate. Suitable for use in environmental air space in accordance with section 300-22 (c) of the National Electric Code, and sections 2-128, 12-010 (3) and 12-100 of the Canadian Electrical Code, part 1, CSA C22.1. Screen to be listed by Underwriters' Laboratories.



## 4:3 VIDEO FORMAT DIMENSIONS (2" standard black drop at top)

Viewing Area H x W	Nominal Diagonal	Overall Case Length	Approx. Shipping Wt. Lbs.
123" x 164"	210"	183 1/2"	587
141" x 188"	240"	207 1/2"	662
159" x 212"	265"	231 1/2"	738
177" x 236"	295"	255 1/2"	847

## 16:9 HDTV FORMAT DIMENSIONS (2" standard black drop at top)

Viewing Area H x W	Nominal Diagonal	Overall Case Length	Approx. Shipping Wt. Lbs.
106" x 188"	216"	207 1/2"	651
119" x 212"	243"	231 1/2"	724
133" x 236"	271"	255 1/2"	830

## SQUARE FORMAT DIMENSIONS

(screens with ^ have 2" standard black drop at top)

Sizes H x W	Overall Case Length	Approx. Shipping Wt. Lbs.
10'6" x 14'	183 1/2"	588
14' x 14'	183 1/2"	599
12' x 16'^A	207 1/2"	663
16' x 16'	207 1/2"	671
13'6" x 18'^A	231 1/2"	738
18' x 18'	231 1/2"	757
15' x 20'^A	255 1/2"	847
20' x 20'	255 1/2"	871
16'6" x 22'^A	279 1/2"	929
22' x 22'^A	279 1/2"	958
18' x 24'^A	303 1/2"	1012

Overall case length dimensions ± 1/4".

**Note:** Custom formats and sizes available upon request.



## TENSIONED ADVANTAGE® ELECTROL®

## Concealed without Doors Electric Projection Screen

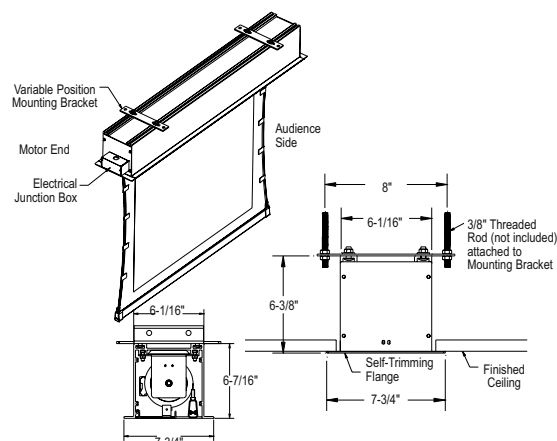
When ordering, make appropriate selections:

- Select size from charts at the lower right.
- Select viewing surface:
  - Da-Mat®
  - High Contrast Da-Mat®
  - Cinema Vision®
  - High Contrast Cinema Vision®
  - Pearlescent®
  - Audio Vision®
  - High Contrast Audio Vision®
  - High Contrast Cinema Perf®
  - Da-Tex® (Rear)
  - Dual Vision®
  - GREENGUARD® and GREENGUARD® Children and Schools Certified.

## 3. Options:

- Single Motor Low Voltage Control (LVC) - external.
- Single Motor Low Voltage Control (LVC) - built-in.
- Wireless Remote Control for LVC.
  - Radio Frequency Remote.
  - Radio Frequency Range Extender available
  - Infrared Remote.
- Key Locking Cover Plate for 120V or LVC Switch.
- Key Operated Switch for 120V only (NOTE: Cannot be used with LVC).
- 220 Volt (50 Hz) Motor.
- Video Projector Interface Control - external.
- Video Projector Interface Control - built-in (Adds 10" to case length on 220V motor only)
- SCB-100 RS-232 Serial Control Board - external.
  - NET-100 Ethernet-Serial Adapter
- SCB-100 RS-232 Serial Control Board - built-in (adds 10" to overall length of case).
- NET-100 Ethernet-Serial Adapter
- SCB-200 RS-232 Serial Control Board - built-in (adds 10" to overall length of case).
- NET-200 Ethernet-Serial Adapter
- WC-200 Wall Controller
- IR-200 Infrared Remote

Detailed dimensional drawings, wiring diagrams and installation instructions available upon request. Specifications subject to change without notice.



- Designed and developed with the installer and the installation process in mind.
- You can choose to receive the case and fabric together or have them sent separately to ensure that the screen surface is not damaged during the "rough-in" stages of construction.
- UL Plenum rated case.
- Tab guide cable system holds screen surface flat.

## SUGGESTED SPECIFICATIONS:

\_\_\_\_\_ projection screen(s), \_\_\_\_\_ (H) x \_\_\_\_\_ (W), electrically operated 120 volt (60 Hz) not more than 2.4 amp. with a quick connect male plug-in connector on the motor. Shall have specially designed motor mounted inside the roller, to be three wire with ground, quick reversal type, oiled for life, with automatic thermal overload cutout, integral gears, capacitor and an electric brake to prevent coasting. To have preset but adjustable limit switches to automatically stop picture surface in the "up" and "down" positions. Junction box shall be externally integrated into the housing making it possible to install the housing and wire to the building's electrical system during construction. The junction box shall contain a quick connect connector that is mounted in the housing for easy plug-in connection to the motorized fabric and roller assembly. The motorized fabric and roller assembly to be installed in the case at the factory or at a later time at the job site. The fabric roller to be of rigid aluminum. Screen to be designed for left or right-hand motor installation. Screen fabric to be seamless, flame retardant and mildew resistant vinyl with black masking borders standard. Each side of the fabric to have tab guide cable system to maintain even lateral tension and hold surface flat. Custom slat bar with added weight maintains vertical tension on the screen surface. The ends of the slat to be protected by heavy duty plastic caps enclosing a preset adjustable mechanism for screen tensioning. Top, front and back of case to be made of extruded aluminum powder coated white. End caps to be of heavy gauge steel powder coated white. Bottom of case to have a removable access door. Door to be of extruded aluminum powder coated white. Bottom of case to be self-trimming, with a built-in flange around the bottom of the case. To be completed with a three-position control switch and cover plate. Suitable for use in environmental air space in accordance with section 300-22 (c) of the National Electric Code, and sections 2-128, 12-010 (3) and 12-100 of the Canadian Electrical Code, part 1, CSA C22.1. Screen to be listed by Underwriters' Laboratories.



All viewing surfaces will be seamless.

Audio Vision, High Contrast Audio Vision and High Contrast Cinema Perf available in sizes up to 87" x 116" in Video Format and 78" x 139" in HDTV Format.

All viewing surfaces are standard with black backing except Da-Tex® and Dual Vision.

## 4:3 VIDEO FORMAT DIMENSIONS

Viewing Area H x W	Nominal Diagonal	Overall Case Length	Approx. Shipping Wt. Lbs.
43" x 57"	72"	72½"	77
50" x 67"	84"	83½"	86
60" x 80"	100"	97½"	98
69" x 92"	120"	111½"	111
87" x 116"	150"	138½"	135
108" x 144"	180"	163½"	151
120" x 160"	200"	180½"	169

## 16:9 HDTV FORMAT DIMENSIONS

Viewing Area H x W	Nominal Diagonal	Overall Case Length	Approx. Shipping Wt. Lbs.
45" x 80"	92"	96"	92
52" x 92"	106"	108½"	99
54" x 96"	110"	113"	104
58" x 104"	119"	121½"	114
65" x 116"	133"	134½"	135
78" x 139"	159"	159½"	148
90" x 160"	184"	177½"	169

## 16:10 WIDE FORMAT DIMENSIONS

Viewing Area H x W	Nominal Diagonal	Overall Case Length	Approx. Shipping Wt. Lbs.
50" x 80"	94"	96½"	92
60" x 96"	113"	114"	104
69" x 110"	130"	129"	125
87" x 139"	164"	156½"	148

## SQUARE FORMAT DIMENSIONS

Sizes H x W	Overall Case Length	Approx. Shipping Wt. Lbs.
50" x 50"	66½"	70
60" x 60"	77½"	80
70" x 70"	89"	90
84" x 84"	105½"	104
6' x 8'	115½"	114
8' x 8'	119"	116
7' x 9'	129½"	126
9' x 9'	128"	124
8' x 10'	143"	132
10' x 10'	140"	135
9' x 12'	163½"	151
12' x 12'	168½"	156

Overall case length dimensions ±¼".

Note: All sizes come standard with 12" black drop at top.

Note: Custom formats and sizes available upon request.

Note: Add 10" to overall case length for built-in SCB-100 or SCB-200.

Electrical junction box extends 2½" past case length on left end of case (1½" past ceiling flange). Internal junction box available (will add 3½" to overall case length and must be specified at time of order). Units with built-in LVC will have internal junction box.



## TENSIONED LARGE ADVANTAGE® ELECTROL®

Concealed with Closure Doors  
Electric Projection Screen

When ordering, make appropriate selections:

## 1. Select size from charts below.

## 2. Select viewing surface:

- Da-Mat®
- High Contrast Da-Mat®
- Cinema Vision®
- High Contrast Cinema Vision®
- Pearlescent®
- Da-Tex® (Rear)
- Dual Vision®
- GREENGUARD® and GREENGUARD® Children and Schools Certified.

## 3. Options:

- Single Motor Low Voltage Control (LVC) - external.
- Single Motor Low Voltage Control (LVC) - built-in.
- Wireless Remote Control for LVC.
  - Radio Frequency Remote.
  - Radio Frequency Range Extender available
  - Infrared Remote.
- Key Locking Cover Plate for 120V or LVC Switch.
- Key Operated Switch for 120V only (NOTE: Cannot be used with LVC).
- 220 Volt (50 Hz) Motor.
- Video Projector Interface Control - external.
- SCB-100 RS-232 Serial Control Board - external.
  - NET-100 Ethernet-Serial Adapter
- SCB-100 RS-232 Serial Control Board - built-in (adds 10" to overall length of case).
- NET-100 Ethernet-Serial Adapter

Detailed dimensional drawings, wiring diagrams and installation instructions available upon request. Specifications subject to change without notice.



- Designed and developed with the installer and the installation process in mind.
- Heavy duty aluminum extruded case with white powder coated finish.
- UL Plenum rated case.
- Tab guide cable system holds screen surface flat.

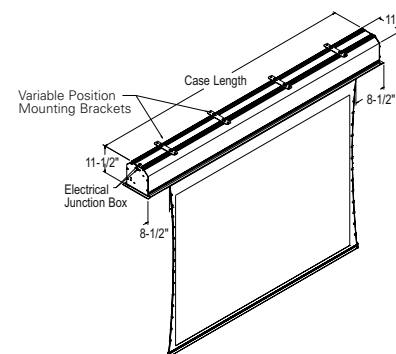
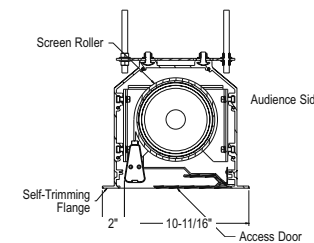
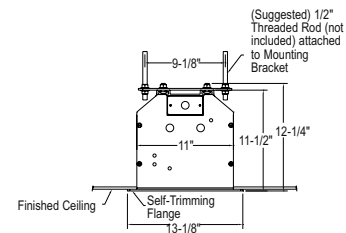
## SUGGESTED SPECIFICATIONS:

\_\_\_\_\_ projection screen(s), \_\_\_\_\_ (H) x \_\_\_\_\_ (W), electrically operated 120 volt (60 Hz) not more than 2.4 amp. with a quick connect male plug-in connector on the motor. Shall have specially designed motor mounted inside the roller, to be three wire with ground, quick reversal type, oiled for life, with automatic thermal overload cutout, integral gears, capacitor and an electric brake to prevent coasting. To have preset but adjustable limit switches to automatically stop picture surface in the "up" and "down" positions. Junction box shall be internally integrated into the housing making it possible to install the housing and wire to the building's electrical system during construction. The junction box shall contain a quick connect connector that is mounted in the housing for easy plug-in connection to the motorized fabric and roller assembly. The motorized fabric and roller assembly to be installed in the case at the factory or at a later time at the job site. The fabric roller to be of 4½" diameter (5¾" if 270" diagonal, 275" diagonal, or 298" diagonal) metal. Screen to be designed for left or right-hand motor installation. Screen fabric to be seamless, flame retardant and mildew resistant vinyl with black masking borders standard. Each side of the fabric to have tab guide cable system to maintain even lateral tension and hold surface flat. Custom slat bar with added weight maintains vertical tension on the screen surface. The ends of the slat to be protected by heavy duty plastic caps enclosing a preset adjustable mechanism for screen tensioning. Case to be made of extruded aluminum powder coated white. End caps to be of heavy gauge steel powder coated white. Bottom of case to have a removable access door. Door to be of extruded aluminum powder coated white. To be completed with a three-position control switch and cover plate. Suitable for use in environmental air space in accordance with section 300-22 (c) of the National Electric Code, and sections 2-128, 12-010 (3) and 12-100 of the Canadian Electrical Code, part 1, CSA C22.1. Screen to be listed by Underwriters' Laboratories.



All viewing surfaces will be seamless.

All viewing surfaces are standard with black backing except Da-Tex® and Dual Vision.



## 4:3 VIDEO FORMAT DIMENSIONS

Viewing Area H x W	Nominal Diagonal	Overall Case Length	Approx. Shipping Wt. Lbs.
126" x 168"	210"	199¼"	594
132" x 188"	220"	208¼"	620
144" x 192"	240"	225¾"	672
162" x 216"	270"	251¼"	744

## 16:9 HDTV FORMAT DIMENSIONS

Viewing Area H x W	Nominal Diagonal	Overall Case Length	Approx. Shipping Wt. Lbs.
108" x 192"	220"	220¾"	652
121" x 216"	247"	246¾"	727
135" x 240"	275"	272¾"	803
146" x 260"	298"	294¼"	847

## SQUARE FORMAT DIMENSIONS

Sizes H x W	Overall Case Length	Approx. Shipping Wt. Lbs.
10'6" x 14'	203½"	594
14' x 14'	210½"	620
12' x 16'	230"	672

Overall case length dimensions ±¼".

Note: Custom formats and sizes available upon request.

Note: All sizes come standard with 12" black drop at top except 270" diagonal, which has 2".



# ADVANTAGE® ELECTROL®

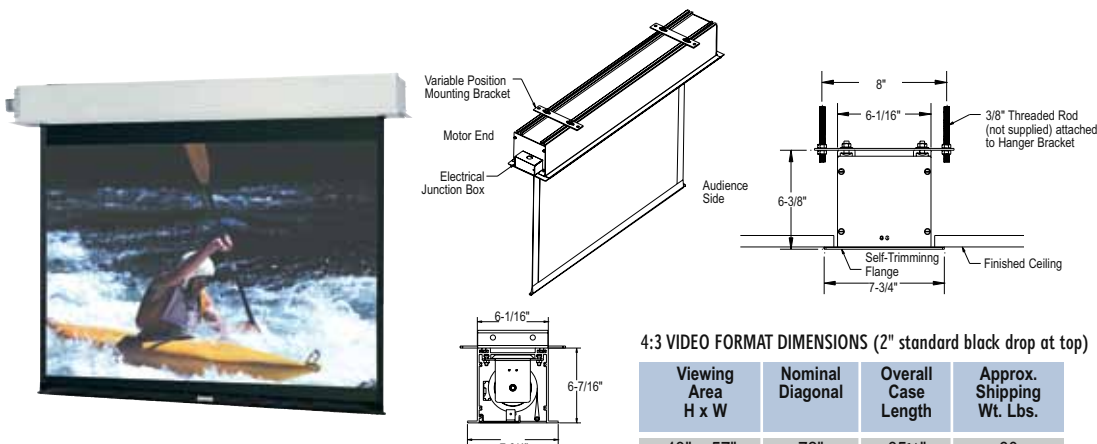
## Concealed without Doors Electric Projection Screen

When ordering, make appropriate selections:

- Select size from charts at the lower right.
- Select viewing surface:
  - Matte White
  - High Contrast Matte White
  - Video Spectra 1.5
  - High Power
  - GREENGUARD® and GREENGUARD® Children and Schools Certified.

### Options:

- Extra Drop available to lower picture area more than normal. Specify total drop at top \_\_\_\_\_ (black or white) or at bottom \_\_\_\_\_ (black or white). 13' maximum total surface height including picture area.
- Single Motor Low Voltage Control (LVC) - external.
- Single Motor Low Voltage Control (LVC) - built-in.
- Wireless Remote Control for LVC.
  - Radio Frequency Remote.
  - Radio Frequency Range Extender available
  - Infrared Remote.
- Silent Motor.
- Silent Motor with Integrated LVC.
- Key Locking Cover Plate for 120V or LVC Switch.
- Key Operated Switch for 120V only (NOTE: Cannot be used with LVC).
- No Borders (Black masking borders standard).
- 220 Volt (50 Hz) Motor.
- Video Projector Interface Control - external.
- Video Projector Interface Control - built-in (Adds 10" to case length on 220V motor only)
- SCB-100 RS-232 Serial Control Board - external.
  - NET-100 Ethernet-Serial Adapter
- SCB-100 RS-232 Serial Control Board - built-in. (adds 10" to overall length of case)
  - NET-100 Ethernet-Serial Adapter
- SCB-200 RS-232 Serial Control Board - built-in only. (adds 10" to overall length of case)
  - NET-200 Ethernet-Serial Adapter
  - WC-200 Wall Controller
  - IR-200 Infrared Remote



- Designed and developed with the installer and the installation process in mind.
- You can choose to receive the case and fabric together or have them sent separately to ensure that the screen surface is not damaged during the "rough-in" stages of construction.
- UL Plenum rated case.

## SUGGESTED SPECIFICATIONS:

\_\_\_\_\_ projection screen(s), \_\_\_\_\_ (H) x \_\_\_\_\_ (W), electrically operated 120 volt (60Hz), not more than 2.4 amp with a quick connect male plug-in connector on the motor. Shall have specially designed motor mounted inside the roller, to be three wire with ground, quick reversal type, oiled for life, with automatic thermal overload cutout, integral gears, capacitor and an electric brake to prevent coasting. To have preset but adjustable limit switches to automatically stop picture surface in the "up" and "down" positions. Junction box shall be externally integrated into the housing making it possible to install the housing and wire to the building's electrical system during construction. The junction box shall contain a quick connect connector that is mounted in the housing for easy plug-in connection to the motorized fabric and roller assembly. The roller to be of rigid metal. The motorized fabric and roller assembly to be installed in the case at the factory or at a later time at the job site. Roller mounting brackets to be adjustable to allow centering or offsetting of the screen within the case. Screen to be designed for left or right-hand motor installation. Screen fabric to be flame retardant and mildew resistant fiberglass with black masking borders standard. Bottom of fabric shall be formed into a pocket holding a metal rod. Heavy duty plastic caps shall protect the ends of the rod. Top, front and back of case to be made of extruded aluminum powder coated white. End caps to be of heavy gauge steel, powder coated white. Bottom of case to have a removable access door. Door to be of extruded aluminum powder coated white. Bottom of case to be self-trimming, with a built-in flange around the bottom of the case. To be complete with a three-position control switch and cover plate. Suitable for use in environmental air space in accordance with section 300-22 (c) of the National Electric Code, and sections 2-128, 12-010 (3) and 12-100 of the Canadian Electrical Code, part 1, CSA C22.1. Screen to be listed by Underwriters' Laboratories.



Matte White: Seamless in all sizes.

High Contrast Matte White: Available in sizes where both dimensions do not exceed 10'.

Video Spectra 1.5: Available in sizes where both dimensions do not exceed 8'.

High Power: Available in sizes up to 9' x 12'. Horizontal seam required when both dimensions exceed 6'.

Detailed dimensional drawings, wiring diagrams and installation instructions available upon request. Specifications subject to change without notice.

## 4:3 VIDEO FORMAT DIMENSIONS (2" standard black drop at top)

Viewing Area H x W	Nominal Diagonal	Overall Case Length	Approx. Shipping Wt. Lbs.
43" x 57"	72"	65½"	60
50" x 67"	84"	75½"	65
57" x 77"	96"	89½"	77
60" x 80"	100"	89½"	77
69" x 92"	120"	101½"	89
87" x 116"	150"	125½"	100
105" x 140"	180"	149½"	106
120" x 160"	200"	169½"	123

## 16:9 HDTV FORMAT DIMENSIONS (2" standard black drop at top)

Viewing Area H x W	Nominal Diagonal	Overall Case Length	Approx. Shipping Wt. Lbs.
45" x 80"	92"	89½"	75
52" x 92"	106"	101½"	88
54" x 96"	110"	105½"	89
58" x 104"	119"	113½"	95
65" x 116"	133"	125½"	98
78" x 139"	159"	149½"	104
90" x 160"	184"	169½"	123

## 16:10 WIDE FORMAT DIMENSIONS (2" standard black drop at top)

Viewing Area H x W	Nominal Diagonal	Overall Case Length	Approx. Shipping Wt. Lbs.
50" x 80"	94"	89½"	75
60" x 96"	113"	105½"	89
69" x 110"	130"	119½"	97
87" x 139"	164"	149½"	104

## SQUARE FORMAT DIMENSIONS

(screens with ^ have 2" standard black drop at top)

Sizes H x W	Overall Case Length	Approx. Shipping Wt. Lbs.
50" x 50"	55½"	54
60" x 60"	65½"	61
70" x 70"	75½"	68
84" x 84"	89½"	79
6' x 8'^A	101½"	89
8' x 8'	101½"	91
7' x 9'^A	113½"	96
9' x 9'^A	113½"	97
8' x 10'^A	125½"	100
10' x 10'^A	125½"	102
9' x 12'^A	149½"	106
12' x 12'	149½"	119

Overall case length dimensions ±¼".

Note: Custom formats and sizes available upon request.

Note: Add 10" to overall case length for built-in SCB-100 or SCB-200.

Electrical junction box extends 2½" past case length on left end of case (1½" past ceiling flange). Internal junction box available (will add 3½" to overall case length and must be specified at time of order). Units with built-in LVC will have internal junction box.



## LARGE ADVANTAGE® ELECTROL®

**Concealed without Doors Electric Projection Screen**

When ordering, make appropriate selections:

- Select size from charts at the lower right.
- Select viewing surface:
  - Matte White
  - GREENGUARD® and GREENGUARD® Children and Schools Certified.
- Options:
  - Extra Drop available to lower picture area more than normal. Specify total drop at top \_\_\_\_\_ (black or white) or at bottom \_\_\_\_\_ (black or white). 24' maximum total surface height including picture area except for 24' wide, where maximum drop is 18'.
  - Single Motor Low Voltage Control (LVC) - external.
  - Single Motor Low Voltage Control (LVC) - built-in.
  - Wireless Remote Control for LVC.
    - Radio Frequency Remote.
      - Radio Frequency Range Extender available
    - Infrared Remote.
  - Key Locking Cover Plate for 120V or LVC Switch.
  - Key Operated Switch for 120V only (NOTE: Cannot be used with LVC).
  - No Borders (Black masking borders standard).
  - 220 Volt (50 Hz) Motor.
  - Video Projector Interface Control - external.
  - SCB-100 RS-232 Serial Control Board - external.
    - NET-100 Ethernet-Serial Adapter
  - SCB-100 RS-232 Serial Control Board - built-in. (adds 10" to overall length of case)
  - NET-100 Ethernet-Serial Adapter

**Matte White:** Horizontal seam required when both dimensions exceed 16'.



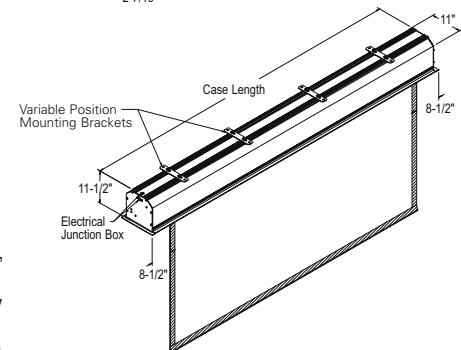
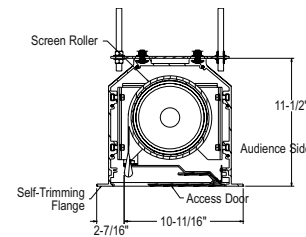
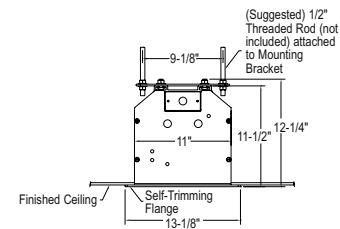
- Designed and developed with the installer and the installation process in mind.
- Heavy duty aluminum extruded case with white powder coated finish.
- UL Plenum rated case.

**SUGGESTED SPECIFICATIONS:**

\_\_\_\_\_ projection screen(s), \_\_\_\_\_ (H) x \_\_\_\_\_ (W), electrically operated 120 volt (60Hz), not more than 2.4 amp with a quick connect male plug-in connector on the motor. Shall have specially designed motor mounted inside the roller, to be three wire with ground, quick reversal type, oiled for life, with automatic thermal overload cutout, integral gears, capacitor and an electric brake to prevent coasting. To have preset but adjustable limit switches to automatically stop picture surface in the "up" and "down" positions. Junction box shall be internally integrated into the housing making it possible to install the housing and wire to the building's electrical system during construction. The junction box shall contain a quick connect connector that is mounted in the housing for easy plug-in connection to the motorized fabric and roller assembly. Rigid metal roller, to be at least 5 3/4" in diameter (on screens 14' to 18' wide) or 7" in diameter (on screens where either height or width equal or exceed 20'). The motorized fabric and roller assembly to be installed in the case at the factory or at a later time at the job site. Roller mounting brackets to be adjustable to allow centering or offsetting of the screen within the case. Screen to be designed for left or right-hand motor installation. Screen fabric to be flame retardant and mildew resistant fiberglass with black masking borders standard. Bottom of fabric shall be formed into a pocket holding a metal rod. Heavy duty plastic caps shall protect the ends of the rod. Case to be made of extruded aluminum powder coated white. End caps to be of heavy gauge steel, powder coated white. Bottom of case to have a removable access door. Door to be of extruded aluminum powder coated white. Bottom of case to be self-trimming, with a built-in flange around the bottom of the case. To be complete with a three-position control switch and cover plate. Suitable for use in environmental air space in accordance with section 300-22 (c) of the National Electric Code, and sections 2-128, 12-010 (3) and 12-100 of the Canadian Electrical Code, part 1, CSA C22.1. Screen to be listed by Underwriters' Laboratories.



Detailed dimensional drawings, wiring diagrams and installation instructions available upon request. Specifications subject to change without notice.

**4:3 VIDEO FORMAT DIMENSIONS (2" standard black drop at top)**

Viewing Area H x W	Nominal Diagonal	Overall Case Length	Approx. Shipping Wt. Lbs.
123" x 164"	210"	183 1/2"	553
141" x 188"	240"	207 1/2"	627
159" x 212"	265"	231 1/2"	702
177" x 236"	295"	255 1/2"	780

**16:9 HDTV FORMAT DIMENSIONS (2" standard black drop at top)**

Viewing Area H x W	Nominal Diagonal	Overall Case Length	Approx. Shipping Wt. Lbs.
106" x 188"	216"	207 1/2"	616
119" x 212"	243"	231 1/2"	688
133" x 236"	271"	255 1/2"	793

**SQUARE FORMAT DIMENSIONS**

(screens with ^ have 2" standard black drop at top)

Sizes H x W	Overall Case Length	Approx. Shipping Wt. Lbs.
10'6" x 14'^A	183 1/2"	554
14' x 14'	183 1/2"	565
12' x 16'^A	207 1/2"	628
16' x 16'	207 1/2"	637
13'6" x 18'^A	231 1/2"	702
18' x 18'	231 1/2"	721
15' x 20'^A	255 1/2"	810
20' x 20'	255 1/2"	834
16'6" x 22'^A	279 1/2"	891
22' x 22'	279 1/2"	920
18' x 24'^A	303 1/2"	973

Overall case length dimensions ± 1/4".

**Note:** Custom formats and sizes available upon request.



# BOARDROOM ELECTROL®

## Concealed with Closure Doors Electric Projection Screen

When ordering, make appropriate selections:

1. Select size from charts at the lower right.

2. Select viewing surface:

- Matte White
- Video Spectra 1.5
- High Power

GREENGUARD® and GREENGUARD® Children and Schools Certified.

3. Options:

- Extra Drop available to lower picture area more than normal. Specify total drop at top \_\_\_\_\_ (black or white) or at bottom \_\_\_\_\_ (black or white). 13' maximum total surface height including picture area.
- Single Motor Low Voltage Control (LVC) - external.
- Wireless Remote Control for LVC.
  - Radio Frequency Remote.
  - Radio Frequency Range Extender available
- Infrared Remote.
- Key Locking Cover Plate for 120V or LVC Switch.
- Silent Motor.
- Key Operated Switch for 120V only (NOTE: Cannot be used with LVC).
- No Borders (Black masking borders standard).
- 220 Volt (50 Hz) Motor.
- Video Projector Interface Control - external.
- External SCB-100 - RS-232 Serial Control Board
  - NET-100 Ethernet-Serial Adapter
- White doors (brushed aluminum standard).
- White box (black standard).



- Concealed-in-the-ceiling electric screen.
- Patented mounting system for in-the-roller motor.
- Mechanical door closure conceals screen.

## SUGGESTED SPECIFICATIONS:

\_\_\_\_\_ projection screen(s), \_\_\_\_\_ (H) x \_\_\_\_\_ (W), electrically operated 120 volt (60Hz), not more than 2.4 amp. Shall have specially designed motor mounted inside the roller, to be three wire with ground, quick reversal type, oiled for life, with automatic thermal overload cutout, integral gears, capacitor and an electric brake to prevent coasting. To have preset but adjustable limit switches to automatically stop picture surface in the "down" position. The roller to be of rigid metal. Screen fabric to be flame retardant and mildew resistant fiberglass with black masking borders standard. Bottom of fabric shall be formed into a pocket holding a metal rod. The ends of the rod shall be protected by heavy-duty plastic caps. Case to be of wood with metal-lined wiring compartment. A section of the bottom of the case shall be a door equipped with hinges so that it opens and closes automatically with the lowering and raising of the picture surface. When the picture surface is being lowered, the door shall drop open by gravity. When the picture surface is being raised, the two ends of the slat in the bottom pocket of the screen fabric shall engage two hooks on the door to lift it to the closed position where the door will engage a micro switch that will cut off the electrical current to the motor. The balance of the bottom of the case shall be a second hinged door with manual opening to provide access. Hinges shall be mounted to allow matching of the doors to the ceiling. Case to be finished with a black primer coat, ready to accept final finish by others. To be complete with three position control switch with cover plate. Screen to be listed by Underwriters' Laboratories.

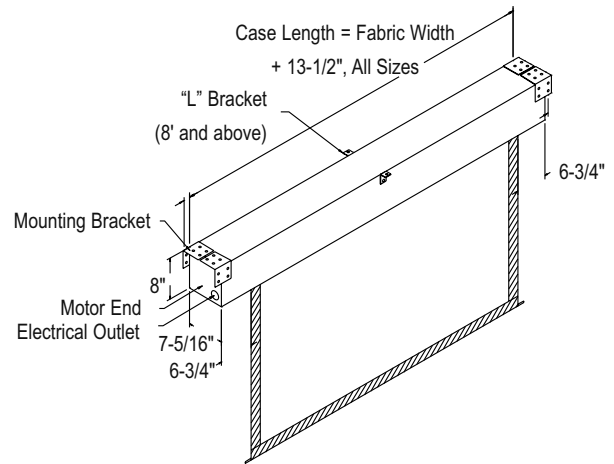


Matte White: Seamless in all sizes.

Video Spectra 1.5: Available in sizes where both dimensions do not exceed 8'.

High Power: Available in sizes up to 9' x 12'. Horizontal seam required when both dimensions exceed 6'.

Detailed dimensional drawings, wiring diagrams and installation instructions available upon request. Specifications subject to change without notice.



## 4:3 VIDEO FORMAT DIMENSIONS (2" standard black drop at top)

Viewing Area H x W	Nominal Diagonal	Overall Case Length*	Approx. Shipping Wt. Lbs.
43" x 57"	72"	73½"	72
50" x 67"	84"	83½"	79
57" x 77"	96"	97½"	86
60" x 80"	100"	97½"	91
69" x 92"	120"	109½"	106
87" x 116"	150"	133½"	129
105" x 140"	180"	157½"	137
120" x 160"	200"	177½"	154

## 16:9 HDTV FORMAT DIMENSIONS (2" standard black drop at top)

Viewing Area H x W	Nominal Diagonal	Overall Case Length*	Approx. Shipping Wt. Lbs.
45" x 80"	92"	97½"	91
52" x 92"	106"	109½"	100
54" x 96"	110"	113½"	105
58" x 104"	119"	121½"	115
65" x 116"	133"	133½"	119
78" x 139"	159"	157½"	149
90" x 160"	184"	177½"	154

## SQUARE FORMAT DIMENSIONS

(screens with ^ have 2" standard black drop at top)

Sizes H x W	Overall Case Length*	Approx. Shipping Wt. Lbs.
50" x 50"	63½"	64
60" x 60"	73½"	73
70" x 70"	83½"	83
84" x 84"	97½"	95
6' x 8'^	109½"	101
8' x 8'	109½"	105
7' x 9'^	121½"	112
9' x 9'^	121½"	119
8' x 10'^	133½"	130
10' x 10'^	133½"	134
9' x 12'^	157½"	137
12' x 12'	157½"	159

Overall case length dimensions ±¼".

\*Add 3" to overall length of case for mounting brackets.

Note: Custom formats and sizes available upon request.



## TENSIONED PROFESSIONAL ELECTROL®

## Wall or Ceiling Mounted or Ceiling Recessed Electric Projection Screen

When ordering, make appropriate selections:

1. Select size from charts at the lower right.
2. Select viewing surface:
  - Da-Mat®
  - High Contrast Da-Mat®
  - Cinema Vision®
  - High Contrast Cinema Vision®
  - Pearlescent®
  - Da-Tex® (Rear)
  - Dual Vision®
  - GREENGUARD® and GREENGUARD® Children and Schools Certified.

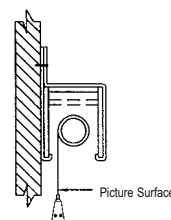
## 3. Options:

- Single Motor Low Voltage Control System (LVC) - external.
- Wireless Remote Control for LVC.
  - Radio Frequency Remote.
  - Radio Frequency Range Extender available
- Infrared Remote.
- Key Locking Cover Plate for 120V or LVC Switch.
- Key Operated Switch for 120V only (NOTE: Cannot be used with LVC).
- 220 Volt (50 Hz) Motor.
- Video Projector Interface Control - external.
- External SCB-100 - RS-232 Serial Control Board.
  - NET-100 Ethernet-Serial Adapter.
- White box (black standard).

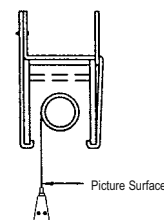


- Da-Lite's largest enclosed electric screen.
- Heavy-duty screen for exposed or recessed installation.

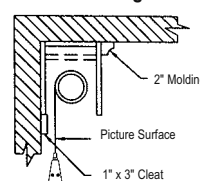
Wall Type Hanger



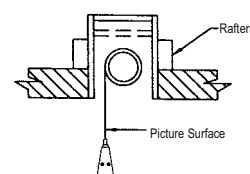
Ceiling Type Hanger



Ceiling Mount Without Hangers



Recessed Above Ceiling



## SUGGESTED SPECIFICATIONS:

\_\_\_\_\_ projection screen(s), \_\_\_\_\_ (H) x \_\_\_\_\_ (W), electrically operated 120 volt (60Hz) not more than 2.4 amp. Shall have specially designed motor mounted inside the roller, to be three wire with ground quick reversal type, oiled for life, with automatic thermal overload cut-out, integral gears, capacitor and an electric brake to prevent coasting. To have pre-set but adjustable limit switches to automatically stop picture surface in the "up" and "down" positions. The roller to be of 4½" diameter aluminum. Roller to be mounted in one heavy duty bracket equipped with self-aligning bearing. Motor to be secured to the case with a steel motor mount bracket. Screen fabric to be flame retardant and mildew resistant vinyl with black masking borders standard. Each side of fabric to have a tab guide cable system to maintain even lateral tension and hold surface flat. Bottom of fabric to be inserted into a custom aluminum slot bar with added weight to provide vertical tension on the screen surface. The ends of the slot to be protected by heavy duty plastic caps enclosing a preset adjustable mechanism for screen tensioning. Case to be of wood, with double top for extra rigidity and strength. Case to be finished with a black primer coat, ready to accept final finish by others, heavy metal brackets shall be supplied for mounting screen to ceiling or wall. To be complete with 3 position control switch with cover plate. Screen to be listed by Underwriter's Laboratories.



All viewing surfaces will be seamless.

All viewing surfaces are standard with black backing except Da-Tex® and Dual Vision.

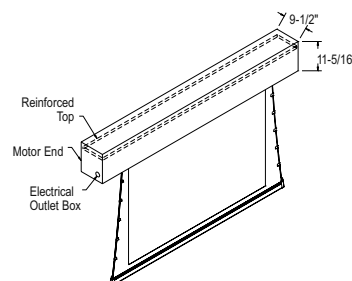
## DO NOT SEAL IN—ALLOW ACCESS

Recessed installation requires access to motor and screen roller.

## FOR EXPOSED INSTALLATION

If the screen is to be mounted in an exposed position, it may be covered with finished plywood, veneer paneling, plastic wall covering or a valance.

Detailed dimensional drawings, wiring diagrams and installation instructions available upon request. Specifications subject to change without notice.



## 4:3 VIDEO FORMAT DIMENSIONS

Viewing Area H x W	Nominal Diagonal	Overall Case Length	Approx. Shipping Wt. Lbs.
108" x 144"	180"	167¼"	301
120" x 160"	200"	184¾"	306
126" x 168"	210"	193¾"	315
132" x 176"	220"	202¾"	320
144" x 192"	240"	220¼"	380
162" x 216"	270"	245¾"	430

## 16:9 HDTV FORMAT DIMENSIONS

Viewing Area H x W	Nominal Diagonal	Overall Case Length	Approx. Shipping Wt. Lbs.
92" x 164"	188"	185¾"	315
108" x 192"	220"	215¼"	350
121" x 216"	247"	241¼"	430
135" x 240"	275"	267¼"	810
146" x 260"	298"	288¾"	875

## SQUARE FORMAT DIMENSIONS

Sizes H x W	Overall Case Length	Approx. Shipping Wt. Lbs.
9' x 12'	167¼"	301
12' x 12'	172¼"	311
10'6" x 14'	193¾"	315
14' x 14'	200¾"	335
12' x 16'	220¼"	380

Overall case length dimensions ±¼".

**Note:** Custom formats and sizes available upon request.

**Note:** All sizes come standard with 12" black drop at top except 270" diagonal, which has 2".



# PROFESSIONAL ELECTROL®

## Wall or Ceiling Mounted or Ceiling Recessed Electric Projection Screen

When ordering, make appropriate selections:

1. Select size from charts at the lower right.

2. Select viewing surface:

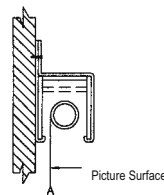
- Matte White
- GREENGUARD® and GREENGUARD® Children and Schools Certified.

3. Options:

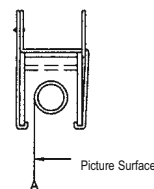
- Extra Drop available to lower picture area more than normal. Specify total drop at top \_\_\_\_\_ (black or white) or at bottom \_\_\_\_\_ (black or white). 22' maximum total surface height including picture area, except for 24' wide, where maximum drop is 18'.
- Single Motor Low Voltage Control (LVC) - external.
- Wireless Remote Control for LVC.
- Radio Frequency Remote.
- Radio Frequency Range Extender available
- Infrared Remote.
- Key Locking Cover Plate for 120V or LVC Switch.
- Key Operated Switch for 120V only (NOTE: Cannot be used with LVC).
- No Borders (Black masking borders standard).
- 220 Volt (50 Hz) Motor.
- Video Projector Interface Control - external.
- External SCB-100 - RS-232 Serial Control Board
- NET-100 Ethernet-Serial Adapter
- White box (black standard).



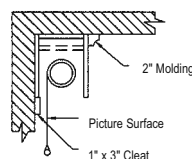
Wall Type Hanger



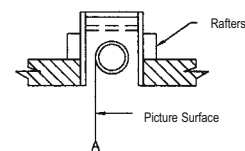
Ceiling Type Hanger



Ceiling Mount Without Hangers

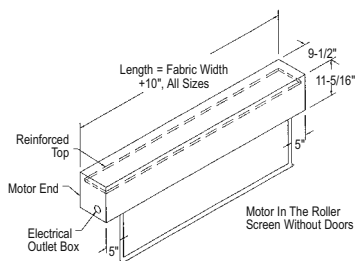


Recessed Above Ceiling

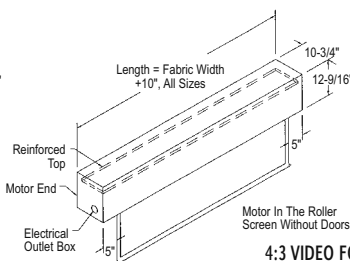


- Da-Lite's largest enclosed electric screen.
- Heavy-duty screen for exposed or recessed installation.

SCREENS UP TO 18' WIDE



SCREENS 20' AND WIDER



## SUGGESTED SPECIFICATIONS:

\_\_\_\_\_ projection screen(s), \_\_\_\_\_ (H) x \_\_\_\_\_ (W), electrically operated 120 volt A.C. (60 Hz). Screen will have not more than 2.4 amp. motor. Shall have specially designed motor mounted inside the roller, to be three wire with ground, quick reversal type, oiled for life, with automatic thermal overload cutout, integral gears, capacitor and an electric brake to prevent coasting. To have preset but adjustable limit switches to automatically stop screen fabric in the "up" and "down" positions. Rigid metal roller, to be at least 3" in diameter (on screens 12' wide), 5 3/4" in diameter (on screens 14' to 18' wide) or 7" in diameter (on screens where either height or width equal or exceed 20'). Roller to be mounted in one heavy duty bracket equipped with self-aligning bearing. Motor to be secured to the case with a steel motor mount bracket. Screen surface to be flame retardant and mildew resistant fiberglass with black masking borders standard. Case to be of wood, with double top for extra rigidity and strength. Case to be finished with a black primer coat, ready to accept final finish by others, heavy metal brackets shall be supplied for mounting screen to ceiling or wall. To be complete with 3 position control switch with cover plate. Screen to be listed by Underwriter's Laboratories.



Matte White: Horizontal seam required when both dimensions exceed 16'.

## DO NOT SEAL IN-ALLOW ACCESS

Recessed installation requires access to motor and screen roller.

## FOR EXPOSED INSTALLATION

If the screen is to be mounted in an exposed position, it may be covered with finished plywood, veneer paneling, plastic wall covering or a valance.

Detailed dimensional drawings, wiring diagrams and installation instructions available upon request. Specifications subject to change without notice.

## 4:3 VIDEO FORMAT DIMENSIONS (2" standard black drop at top)

Viewing Area H x W	Nominal Diagonal	Overall Case Length	Approx. Shipping Wt. Lbs.
120" x 160"	200"	174"	250
123" x 164"	210"	178"	260
141" x 188"	240"	202"	380

## 16:9 HDTV FORMAT DIMENSIONS (2" standard black drop at top)

Viewing Area H x W	Nominal Diagonal	Overall Case Length	Approx. Shipping Wt. Lbs.
78" x 139"	159"	154"	259
92" x 164"	188"	178"	266
106" x 188"	216"	202"	382
119" x 212"	243"	226"	429
133" x 236"	271"	250"	835

## SQUARE FORMAT DIMENSIONS

(screens with ^ have 2" standard black drop at top)

Sizes H x W	Overall Case Length	Approx. Shipping Wt. Lbs.
9' x 12'^	154"	245
12' x 12'	154"	251
10'6" x 14'^	178"	266
14' x 14'	178"	266
12' x 16'^	202"	382
16' x 16'	202"	382
13'6" x 18'^	226"	429
18' x 18'	226"	429
15' x 20'^	250"	835
20' x 20'	250"	845
11' x 22'	274"	901
16'6" x 22'^	274"	911
22' x 22'	274"	921
12' x 24'	298"	987
18' x 24'^	298"	997

Overall case length dimensions ± 1/4".

Note: Custom formats and sizes available upon request.



## STUDIO ELECTROL®

### Wall or Ceiling Mounted or Ceiling Recessed Electric Projection Screen

When ordering, make appropriate selections:

1. Select size from charts at the lower right.
2. Select viewing surface:
  - Matte White
  - Perforated Matte White
3. Options:
  - Extra Drop available to lower picture area more than normal. Specify total white drop at top \_\_\_\_\_ or at bottom \_\_\_\_\_. 19'-8" maximum total surface height including picture area.
  - Black case (grey standard)
  - White case (grey standard)



- Aluminum extruded case with grey painted finish. Black and white painted finishes available.
- Wall or ceiling mount using the two furnished adjustable mounting brackets.
- Includes a radio frequency remote control and a three position wall switch.
- The projection screen surface is centered in the screen housing.
- Available with Matte White and Perforated Matte White fabric, no borders.

### SUGGESTED SPECIFICATIONS:

\_\_\_\_\_ projection screen(s), \_\_\_\_\_ (H) x \_\_\_\_\_ (W), electrically operated 120 volt (60Hz), not more than 3.4 amp. Shall have specially designed motor mounted inside the roller, to be two wire with ground, quick reversal type, oiled for life, with automatic thermal overload cutout, integral gears, capacitor and an electric brake to prevent coasting. To have preset but adjustable limit switches to automatically stop picture surface in the "up" and "down" positions. Junction box shall be internally integrated into the housing making it possible to install the housing and wire to the building's electrical system during construction. Rigid metal roller, to be at least 7<sup>5</sup>/<sub>8</sub>" in diameter. The motorized fabric and roller assembly to be installed in the case at the factory. Screen to be designed for left hand motor installation. Screen fabric to be flame retardant and mildew resistant. Bottom of fabric shall be fitted with a metal slat covering. Heavy duty plastic caps shall protect the ends of the metal slat. Case housing to be made of structural steel tubing with aluminum metal coverings on top, aluminum profiles on rear and front and two extruded aluminum side coverings. The bottom of the casing is standard open. To be complete with a three-position radio remote control. Screen to be listed by Underwriters' Laboratories.

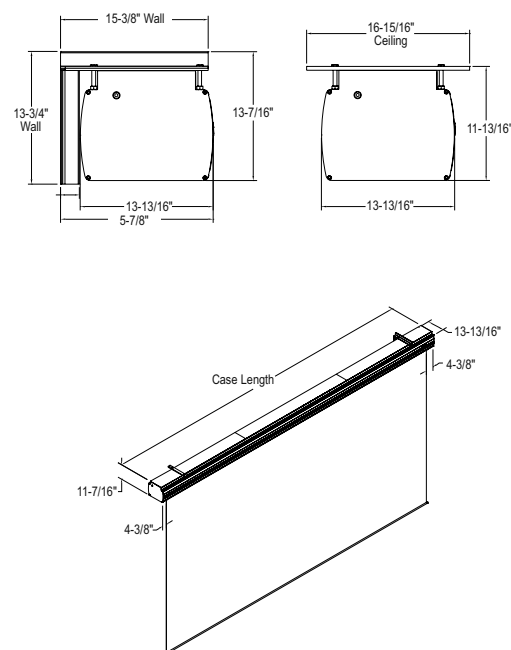


Horizontal seam required when height exceeds 75".

### DO NOT SEAL IN—ALLOW ACCESS

Recessed installation requires access to motor and screen roller.

Specifications subject to change without notice.



### 4:3 VIDEO FORMAT DIMENSIONS

Viewing Area H x W	Nominal Diagonal	Overall Case Length	Approx. Shipping Wt. Lbs.
234" x 312"	390"	322 <sup>3</sup> / <sub>4</sub> "	1203

### 16:9 HDTV FORMAT DIMENSIONS

Viewing Area H x W	Nominal Diagonal	Overall Case Length	Approx. Shipping Wt. Lbs.
176" x 312"	359"	322 <sup>3</sup> / <sub>4</sub> "	1195
189" x 336"	385"	346 <sup>3</sup> / <sub>4</sub> "	1269
203" x 360"	414"	370 <sup>3</sup> / <sub>4</sub> "	1338
216" x 384"	440"	394 <sup>3</sup> / <sub>4</sub> "	1442

### CINEMASCOPE FORMAT DIMENSIONS

Viewing Area H x W	Nominal Diagonal	Overall Case Length	Approx. Shipping Wt. Lbs.
133" x 312"	340"	322 <sup>3</sup> / <sub>4</sub> "	1186
143" x 336"	365"	346 <sup>3</sup> / <sub>4</sub> "	1254
153" x 360"	391"	370 <sup>3</sup> / <sub>4</sub> "	1312
163" x 384"	416"	394 <sup>3</sup> / <sub>4</sub> "	1416

Overall case length dimensions ±1/4".

**Note:** Custom formats and sizes available upon request.



## TENSIONED CONTOUR® ELECTROL®

## Wall or Ceiling Mounted Electric Projection Screen

When ordering, make appropriate selections:

- Select size from charts at the lower right.
- Select viewing surface:
  - Da-Mat®
  - High Contrast Da-Mat®
  - Cinema Vision®
  - High Contrast Cinema Vision®
  - Pearlescent®
  - Audio Vision®
  - High Contrast Audio Vision®
  - High Contrast Cinema Perf®
  - Da-Tex® (Rear)
  - Dual Vision®
  - GREENGUARD® and GREENGUARD® Children and Schools Certified.

## 3. Options:

- Single Motor Low Voltage Control (LVC) external.
- Single Motor Low Voltage Control (LVC) built-in.
- Wireless Remote Control for LVC.
  - Radio Frequency Remote.
  - Radio Frequency Range Extender available
  - Infrared Remote.
- Key Locking Cover Plate for 120V or LVC Switch.
- Silent Motor.
- Silent Motor with Integrated LVC.
- Key Operated Switch for 120V only (NOTE: Cannot be used with LVC).
- 220 Volt (50 Hz) Motor.
- Video Projector Interface Control - external.
- Video Projector Interface Control - built-in (adds 3¾" to length of case).
- SCB-100 RS-232 Serial Control Board - external.
  - NET-100 Ethernet-Serial Adapter
- SCB-100 RS-232 Serial Control Board - built in (adds 3¾" to length of case).
  - NET-100 Ethernet-Serial Adapter
- SCB-200 RS-232 Serial Control Board - built-in (adds 3¾" to length of case).
  - NET-200 Ethernet-Serial Adapter
- WC-200 Wall Controller
- IR-200 Infrared Remote
- Veneer Case Cover (Choose from seven standard veneers).
  - Light Oak
  - Medium Oak
  - Natural Walnut
  - Heritage Walnut
  - Mahogany
  - Cherry
  - Honey Maple
- Graphite case color.
- White case (black standard).



- Stylish, curved aluminum extruded case.
- Optional low voltage control can be built-in the case.
- Two piece case allows easy access to motor and roller.
- Tab guide cable system holds screen surface flat.

## SUGGESTED SPECIFICATIONS:

\_\_\_\_\_ projection screen(s), \_\_\_\_\_ (H) x \_\_\_\_\_ (W), electrically operated 120 volt (60 Hz) not more than 2.4 amp. Shall have specially designed motor mounted inside the roller, to be three wire with ground, quick reversal type, oiled for life, with automatic thermal overload cutout, integral gears, capacitor and an electric brake to prevent coasting. To have preset but adjustable limit switches to automatically stop the picture surface in the "up" and "down" positions. Junction box shall be integrated into the housing making it possible to install the housing and wire to the building's electrical system during construction. The junction box shall contain a quick connect connector that is mounted in the housing for easy plug-in connection to the motorized fabric and roller assembly. The motorized fabric and roller assembly may be installed in the case at the factory or at a later time at the job site. The roller to be of rigid metal. Roller mounting brackets to be adjustable to allow centering or offsetting of the screen within the case. Screen case to be a two piece design made of extruded aluminum. Case to be finished in black, lightly textured powder coat. Screen fabric to be flame retardant and mildew resistant vinyl with black masking borders standard. Each side of fabric to have a tab guide cable system to maintain even lateral tension and hold surface flat. Bottom of fabric to be inserted into a custom aluminum slot bar with added weight to provide vertical tension on the screen surface. The ends of the slot to be protected by heavy duty plastic caps enclosing a preset adjustable mechanism for screen tensioning. Screen to include a three-position control switch and cover plate. Screen to be listed by Underwriters' Laboratories.



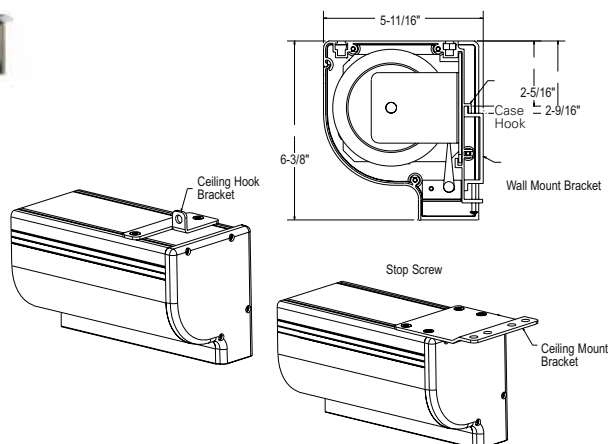
All viewing surfaces will be seamless.

All viewing surfaces are standard with black backing except Da-Tex® and Dual Vision.

Audio Vision, High Contrast Audio Vision and High Contrast Cinema Perf available in sizes up to 87" x 116" in Video Format and 78" x 139" in HDTV Format.

Detailed dimensional drawings, wiring diagrams and installation instructions available upon request.

Specifications subject to change without notice.



## 4:3 VIDEO FORMAT DIMENSIONS

Viewing Area H x W	Nominal Diagonal	Overall Case Length	Approx. Shipping Wt. Lbs.
43" x 57"	72"	77¼"	66
50" x 67"	84"	87¾"	73
60" x 80"	100"	102¼"	84
69" x 92"	120"	111¾"	94
87" x 116"	150"	137¾"	114
108" x 144"	180"	167¾"	135
120" x 160"	200"	184¼"	148

## 16:9 HDTV FORMAT DIMENSIONS

Viewing Area H x W	Nominal Diagonal	Overall Case Length	Approx. Shipping Wt. Lbs.
45" x 80"	92"	100¼"	79
52" x 92"	106"	113¾"	83
54" x 96"	110"	117¼"	86
58" x 104"	119"	125¾"	95
65" x 116"	133"	138¾"	114
78" x 139"	159"	159¾"	134
90" x 160"	184"	181¾"	148

## 16:10 WIDE FORMAT DIMENSIONS

Viewing Area H x W	Nominal Diagonal	Overall Case Length	Approx. Shipping Wt. Lbs.
50" x 80"	94"	100¾"	77
60" x 96"	113"	118¾"	92
69" x 110"	130"	133¾"	104
87" x 139"	164"	160¾"	126

## SQUARE FORMAT DIMENSIONS

Sizes H x W	Overall Case Length	Approx. Shipping Wt. Lbs.
50" x 50"	70¾"	61
60" x 60"	82¼"	69
70" x 70"	93¾"	77
84" x 84"	105¼"	88
6' x 8'	115¾"	97
8' x 8'	118¾"	100
7' x 9'	129¼"	108
9' x 9'	131¾"	105
8' x 10'	142¼"	118
10' x 10'	145¼"	120
9' x 12'	167¾"	130
12' x 12'	171¾"	135

Overall case length dimensions ±¼".

Note: Add 3¾" to overall case length for built-in SCB-100 or SCB-200.

Note: Custom formats and sizes available upon request.

Note: All sizes come standard with 12" black drop at top.



## CONTOUR® ELECTROL®

## Wall or Ceiling Mounted Electric Projection Screen

When ordering, make appropriate selections:

1. Select size from charts at the lower right.

2. Select viewing surface:

- Matte White
- High Contrast Matte White
- Video Spectra 1.5
- High Power
- GREENGUARD® and GREENGUARD® Children and Schools Certified.

3. Options:

- Extra Drop available to lower picture area more than normal. Specify total drop at top \_\_\_\_\_ (black or white) or at bottom \_\_\_\_\_ (black or white). 13' maximum total surface height including picture area.

- No borders (Black masking borders standard).

- Single Motor Low Voltage Control (LVC) – external.

- Single Motor Low Voltage Control (LVC) – built-in.

- Wireless Remote Control for LVC.

- Radio Frequency Remote Extender available

- Infrared Remote

- Silent Motor.

- Silent Motor with Integrated LVC.

- Key Locking Cover Plate for 120V Switch or LVC.

- Key Operated Switch for 120V only (Note: Cannot be used with LVC).

- 220 Volt (50 Hz) Motor.

- Video Projector Interface Control - external.

- Video Projector Interface Control - built-in (adds 3¼" to length of case for 220V motor version only).

- SCB-100 RS-232 Serial Control Board - external.

- NET-100 Ethernet-Serial Adapter

- SCB-100 RS-232 Serial Control Board - built-in (adds 3¼" to length of case).

- NET-100 Ethernet-Serial Adapter
- SCB-200 RS-232 Serial Control Board - built-in (adds 3¼" to length of case).

- NET-200 Ethernet-Serial Adapter

- WC-200 Wall Controller

- IR-200 Infrared Remote

- Veneer Case Cover (Choose from seven standard veneers).

- Light Oak

- Medium Oak

- Natural Walnut

- Heritage Walnut

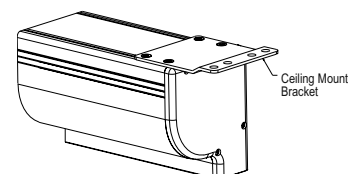
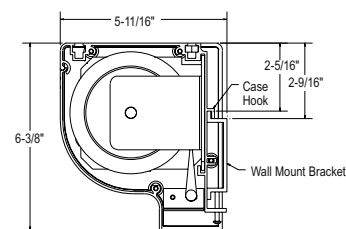
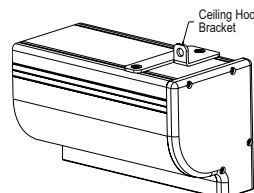
- Mahogany

- Cherry

- Honey Maple

- Graphite case color.

- Black case (white standard).



- Stylish, curved aluminum extruded case.
- Optional low voltage control can be built-in the case.
- Two piece case allows easy access to motor and roller.

## SUGGESTED SPECIFICATIONS:

\_\_\_\_\_ projection screen(s), \_\_\_\_\_ (H) x \_\_\_\_\_ (W), electrically operated 120 volt (60 Hz) not more than 2.4 amp. Shall have specially designed motor mounted inside the roller, to be three wire with ground, quick reversal type, oiled for life, with automatic thermal overload cutout, integral gears, capacitor and an electric brake to prevent coasting. To have preset but adjustable limit switches to automatically stop the picture surface in the "up" and "down" positions. Junction box shall be integrated into the housing making it possible to install the housing and wire to the building's electrical system during construction. The junction box shall contain a quick connect connector that is mounted in the housing for easy plug-in connection to the motorized fabric and roller assembly. The motorized fabric and roller assembly may be installed in the case at the factory or at a later time at the job site. The roller to be of rigid metal. Roller mounting brackets to be adjustable to allow centering or offsetting of the screen within the case. Screen case to be a two piece design made of extruded aluminum. Case to be finished in white lightly textured powder coat. Screen fabric to be a flame retardant and mildew resistant fiberglass with black masking borders standard. Bottom of fabric shall be formed into a pocket holding a metal rod. Screen to include a three-position control switch and cover plate. Screen to be listed by Underwriters' Laboratories.



Matte White: Seamless in all sizes.

High Contrast Matte White: Available in sizes where both dimensions do not exceed 10'.

Video Spectra 1.5: Available in sizes where both dimensions do not exceed 8'.

High Power: Available in sizes up to 9' x 12'. Horizontal seam required when both dimensions exceed 6'.

Detailed dimensional drawings, wiring diagrams and installation instructions available upon request.

Specifications subject to change without notice.

## 4:3 VIDEO FORMAT DIMENSIONS (2" standard black drop at top)

Viewing Area H x W	Nominal Diagonal	Overall Case Length	Approx. Shipping Wt. Lbs.
43" x 57"	72"	69¾"	44
50" x 67"	84"	79¾"	49
57" x 77"	96"	93¾"	57
60" x 80"	100"	93¾"	57
69" x 92"	120"	105¾"	64
87" x 116"	150"	129¾"	87
105" x 140"	180"	153¾"	97
120" x 160"	200"	173¾"	109

## 16:9 HDTV FORMAT DIMENSIONS (2" standard black drop at top)

Viewing Area H x W	Nominal Diagonal	Overall Case Length	Approx. Shipping Wt. Lbs.
45" x 80"	92"	93¾"	57
52" x 92"	106"	105¾"	62
54" x 96"	110"	109¾"	63
58" x 104"	119"	117¾"	69
65" x 116"	133"	129¾"	83
78" x 139"	159"	153¾"	96
90" x 160"	184"	173¾"	109

## 16:10 WIDE FORMAT DIMENSIONS (2" standard black drop at top)

Viewing Area H x W	Nominal Diagonal	Overall Case Length	Approx. Shipping Wt. Lbs.
50" x 80"	94"	93¾"	56
60" x 96"	113"	109¾"	80
69" x 110"	130"	123¾"	90
87" x 139"	164"	153¾"	105

## SQUARE FORMAT DIMENSIONS

(screens with ^ have 2" standard black drop at top)

Sizes H x W	Overall Case Length	Approx. Shipping Wt. Lbs.
50" x 50"	59¾"	39
60" x 60"	69¾"	45
70" x 70"	79¾"	49
84" x 84"	93¾"	58
6' x 8'^A	105¾"	64
8' x 8'	105¾"	66
7' x 9'^A	117¾"	70
9' x 9'^A	117¾"	75
8' x 10'^A	129¾"	87
10' x 10'^A	129¾"	89
9' x 12'^A	153¾"	97
12' x 12'	153¾"	98

Overall case length dimensions ±¼".

Note: Add 3¼" to overall case length for built-in SCB-100 or SCB-200.

Note: Custom formats and sizes available upon request.



# TENSIONED COSMOPOLITAN® ELECTROL®

## Wall or Ceiling Mounted Electric Projection Screen

When ordering, make appropriate selections:

- Select size from charts at the lower right.
- Select viewing surface:
  - Da-Mat®
  - High Contrast Da-Mat®
  - Cinema Vision®
  - High Contrast Cinema Vision®
  - Pearlescent®
  - Audio Vision®
  - High Contrast Audio Vision®
  - High Contrast Cinema Perf®
  - Da-Tex® (Rear)
  - Dual Vision®
  - GREENGUARD® and GREENGUARD® Children and Schools Certified.

### Options:

- Single Motor Low Voltage Control (LVC) - external.
- Single Motor Low Voltage Control (LVC) - built-in.
- Wireless Remote Control for LVC.
  - Radio Frequency Remote.
  - Radio Frequency Range Extender available
  - Infrared Remote.
- Silent Motor.
- Silent Motor with Integrated LVC.
- Key Locking Cover Plate for 120V or LVC Switch.
- Key Operated Switch for 120V only (NOTE: Cannot be used with LVC).
- 220 Volt (50 Hz) Motor.
- Video Projector Interface Control - external.
- Video Projector Interface Control - built-in.
- Floating Mounting Bracket (black or white). Recommended for drywall installations.
- No. 6 Wall Bracket - 6" extension, non-adjustable (75# maximum per pair) (black or white).
- Ceiling Trim Kit. Built in LVC recommended.
- External SCB-100 - RS-232 Serial Control Board
  - NET-100 Ethernet-Serial Adapter
- White case (black standard).
- Veneer Case Finish (Choose from seven standard veneers).
  - Light Oak
  - Medium Oak
  - Natural Walnut
  - Heritage Walnut
  - Mahogany
  - Cherry
  - Honey Maple



- High quality electric screen.
- Easy to install.
- Patented rubber mounting system for in-the-roller motor.
- Tab guide cable system holds screen surface flat.

### SUGGESTED SPECIFICATIONS:

\_\_\_\_\_ projection screen(s), \_\_\_\_\_ (H) x \_\_\_\_\_ (W), electrically operated 120 volt (60 Hz) not more than 2.4 amp. To have seamless surfaces with black masking borders standard on flame retardant and mildew resistant fabric mounted on rigid metal roller. Each side of the fabric to have tab guide cable system to maintain even lateral tension and hold surface flat. Custom slat bar with added weight maintains vertical tension on the screen surface. The ends of the slat to be protected by heavy duty plastic caps enclosing a preset adjustable mechanism for screen tensioning. Shall have specially designed motor mounted inside the roller, to be three wire with ground, quick reversal type, oiled for life, with automatic thermal overload cutout, integral gears, capacitor and an electric brake to prevent coasting. To have preset but adjustable limit switches to automatically stop picture surface in the "up" and "down" position. Case to be powder coated black 21-gauge steel, hexagon in shape with flat back to prevent scraping fabric. Case end caps to be heavy duty, allowing no exposed roller pins. Caps shall form sturdy brackets for wall or ceiling installation. To be complete with three position control switch with cover plate. Screen to be listed by Underwriters' Laboratories.

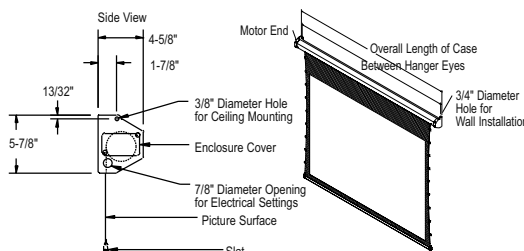


All viewing surfaces will be seamless.

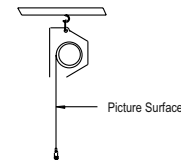
All viewing surfaces are standard with black backing except Da-Tex® and Dual Vision.

Audio Vision, High Contrast Audio Vision and High Contrast Cinema Perf available in sizes up to 87" x 116" in Video Format and 78" x 139" in HDTV Format.

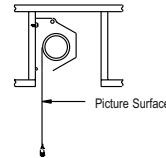
Detailed dimensional drawings, wiring diagrams and installation instructions available upon request. Specifications subject to change without notice.



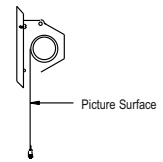
### Ceiling Mounted



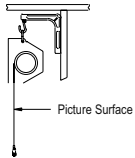
### Concealed



### Wall Mounted



### Use No. 6 Brackets To Hang Behind Beam Or Valance



### 4:3 VIDEO FORMAT DIMENSIONS

Viewing Area H x W	Nominal Diagonal	Overall Case Length	Between Hanger Eyes	Approx. Shipping Wt. Lbs.
43" x 57"	72"	75"	73½"	61
50" x 67"	84"	86"	84½"	67
60" x 80"	100"	100"	98½"	76
69" x 92"	120"	114"	112½"	85
87" x 116"	150"	141"	139½"	104

### 16:9 HDTV FORMAT DIMENSIONS

Viewing Area H x W	Nominal Diagonal	Overall Case Length	Between Hanger Eyes	Approx. Shipping Wt. Lbs.
45" x 80"	92"	98½"	97"	67
52" x 92"	106"	111"	109½"	74
54" x 96"	110"	115½"	114"	77
58" x 104"	119"	124"	122½"	85
65" x 116"	133"	137"	135½"	104
78" x 139"	159"	162"	160½"	122

### 16:10 WIDE FORMAT DIMENSIONS

Viewing Area H x W	Nominal Diagonal	Overall Case Length	Between Hanger Eyes	Approx. Shipping Wt. Lbs.
50" x 80"	94"	99"	97½"	67
60" x 96"	113"	116½"	115"	77
69" x 110"	130"	131½"	130"	95
87" x 139"	164"	159"	157½"	122

### SQUARE FORMAT DIMENSIONS

Sizes H x W	Overall Case Length	Between Hanger Eyes	Approx. Shipping Wt. Lbs.
50" x 50"	69"	67½"	56
60" x 60"	80"	78½"	63
70" x 70"	91½"	90"	70
84" x 84"	108"	106½"	78
6' x 8'	118"	116½"	85
8' x 8'	121½"	120"	87
7' x 9'	132"	130½"	89
9' x 9'	130½"	129"	92
8' x 10'	145½"	144"	104
10' x 10'	142½"	141"	112

Overall case length dimensions ±¼".

Note: All sizes come standard with 12" black drop at top.

Note: Custom formats and sizes available upon request.



## TENSIONED LARGE COSMOPOLITAN® ELECTROL®

## Wall or Ceiling Mounted Electric Projection Screen

When ordering, make appropriate selections:

1. Select size from charts at the lower right.
2. Select viewing surface:
  - Da-Mat®
  - High Contrast Da-Mat®
  - Cinema Vision®
  - High Contrast Cinema Vision®
  - Pearlescent®
  - Da-Tex® (Rear)
  - Dual Vision®
  - GREENGUARD® and GREENGUARD® Children and Schools Certified.

3. Options:
  - Single Motor Low Voltage Control System (LVC) - external.
  - Single Motor Low Voltage Control System (LVC) - built-in.
  - Wireless Remote Control for LVC.
    - Radio Frequency Remote.
    - Radio Frequency Range Extender available
    - Infrared Remote.
  - Key Locking Cover Plate for 120V or LVC Switch.
  - Key Operated Switch for 120V only (NOTE: Cannot be used with LVC).
  - 220 Volt (50 Hz) Motor.
  - Video Projector Interface Control - external.
  - External SCB-100 - RS-232 Serial Control Board.
    - NET-100 Ethernet-Serial Adapter.
  - White case (black standard).
  - Veneer Case Cover (Choose from seven standard veneers).
    - Light Oak
    - Medium Oak
    - Natural Walnut
    - Heritage Walnut
    - Mahogany
    - Cherry
    - Honey Maple



- Large format motorized wall or ceiling mount screen.
- Included adjustable ceiling and wall mounting brackets streamline installation.
- Tab guide cable system holds screen surface flat.

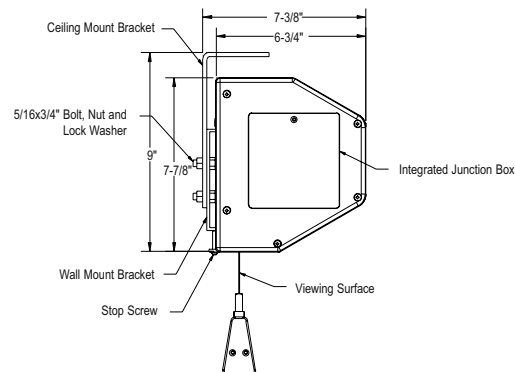
## SUGGESTED SPECIFICATIONS:

\_\_\_\_\_ projection screen(s), \_\_\_\_\_ (H) x \_\_\_\_\_ (W), electrically operated 120 volt (60Hz) not more than 2.4 amp. Shall have specially designed motor mounted inside the roller, to be three wire with ground quick reversal type, oiled for life, with automatic thermal overload cut-out, integral gears, capacitor and an electric brake to prevent coasting. To have pre-set but adjustable limit switches to automatically stop picture surface in the "up" and "down" positions. The roller to be of aluminum. Screen fabric to be flame retardant and mildew resistant vinyl with black masking borders standard. Each side of fabric to have a tab guide cable system to maintain even lateral tension and hold surface flat. Bottom of fabric to be inserted into a custom aluminum slat bar with added weight to provide vertical tension on the screen surface. The ends of the slat to be protected by heavy duty plastic caps enclosing a preset adjustable mechanism for screen tensioning. Case to be a two-piece design made of extruded aluminum with a black, lightly textured powder coat finish. Screen to include a three-position control switch and cover plate. Screen to be listed by Underwriters' Laboratories.



All viewing surfaces will be seamless.  
All viewing surfaces are standard with black backing except Da-Tex® and Dual Vision.

Detailed dimensional drawings, wiring diagrams and installation instructions available upon request.  
Specifications subject to change without notice.



## 4:3 VIDEO FORMAT DIMENSIONS

Viewing Area H x W	Nominal Diagonal	Overall Case Length	Approx. Shipping Wt. Lbs.
108" x 144"	180"	167½"	205
120" x 160"	200"	185"	240
126" x 168"	210"	194"	250
132" x 176"	220"	203"	260
144" x 192"	240"	220½"	309

## 16:9 HDTV FORMAT DIMENSIONS

Viewing Area H x W	Nominal Diagonal	Overall Case Length	Approx. Shipping Wt. Lbs.
92" x 164"	188"	186"	240
108" x 192"	220"	215½"	305

## SQUARE FORMAT DIMENSIONS

Sizes H x W	Overall Case Length	Approx. Shipping Wt. Lbs.
9' x 12'	167½"	205
12' x 12'	172½"	220
10'6" x 14'	194"	250
14' x 14'	201"	280
12' x 16'	220½"	309

Overall case length dimensions  $\pm 1/4$ ".

Note: All sizes come standard with 12" black drop at top.

Note: Custom formats and sizes available upon request.



## COSMOPOLITAN® ELECTROL®

### Wall or Ceiling Mounted Electric Projection Screen

When ordering, make appropriate selections:

1. Select size from charts at the lower right.

2. Select viewing surface:

- Matte White
- High Contrast Matte White
- Video Spectra 1.5
- High Power
- GREENGUARD® and GREENGUARD® Children and Schools Certified.

3. Options:

- Extra Drop available to lower picture area more than normal. Specify total drop at top \_\_\_\_\_ (black or white) or at bottom \_\_\_\_\_ (black or white). 13' maximum total surface height including picture area.
- No borders (Black masking borders standard).
- Single Motor Low Voltage Control (LVC) - external.
- Single Motor Low Voltage Control (LVC) - built-in.
- Wireless Remote Control for LVC.
  - Radio Frequency Remote
  - Radio Frequency Range Extender available
  - Infrared Remote
- Silent Motor.
- Silent Motor with Integrated LVC.
- Key Locking Cover Plate for 120V Switch or LVC Switch.
- Key Operated Switch for 120V only (Note: Cannot be used with LVC).
- 220 Volt (50 Hz) Motor.
- No. 6 Wall Bracket – 6" non-adjustable extension brackets (75# maximum per pair) (black or white).
- Ceiling Trim Kit. Built in LVC recommended.
- Video Projector Interface Control - external.
- Video Projector Interface Control - built-in.
- Floating Mounting Bracket. Recommended for drywall installations (black or white).
- Veneer Frame Finish (Choose from seven standard veneers).
  - Light Oak
  - Medium Oak
  - Natural Walnut
  - Heritage Walnut
  - Mahogany
  - Cherry
  - Honey Maple
- External SCB-100 - RS-232 Serial Control Board
  - NET-100 Ethernet-Serial Adapter
- Black case (white standard).



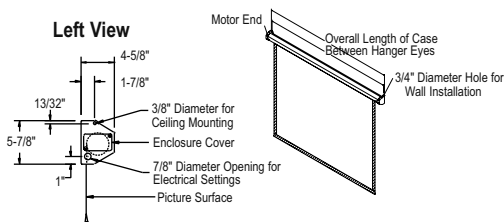
- High quality electric screen.
- Easy to install.
- Patented mounting system for in-the-roller motor.

### SUGGESTED SPECIFICATIONS:

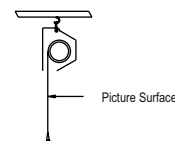
\_\_\_\_\_ projection screen(s), \_\_\_\_\_ (H) x \_\_\_\_\_ (W), electrically operated 120 volt (60 Hz) not more than 2.4 amp. Shall have specially designed motor mounted inside the roller, to be three wire with ground quick reversal type, oiled for life, with automatic thermal overload cut-out, integral gears, capacitor and an electric brake to prevent coasting. To have pre-set but adjustable limit switches to automatically stop picture surface in the "up" and "down" positions. The roller to be of rigid metal. Screen fabric to be flame retardant and mildew resistant fiberglass with black masking borders standard. Bottom of fabric shall be formed into a pocket holding a metal rod. Case to be powder coated white 21-gauge steel, hexagon in shape with flat back to prevent scraping fabric. Case end caps to be heavy duty, allowing no exposed roller pins. End caps shall form sturdy brackets for wall or ceiling installation. To be complete with three position control switch with cover plate. Screen to be listed by Underwriters' Laboratories.

Matte White: Seamless in all standard sizes.  
 High Contrast Matte White: Available in sizes where both dimensions do not exceed 10'.  
 Video Spectra 1.5: Available in sizes where both dimensions do not exceed 8'.  
 High Power: Available in sizes up to 9' x 12'. Horizontal seams required when both dimensions exceed 6'.

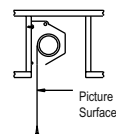
Detailed dimensional drawings, wiring diagrams and installation instructions available upon request. Specifications subject to change without notice.



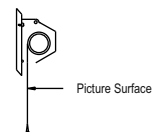
### Ceiling Mounted



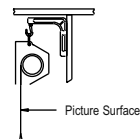
### Concealed



### Wall-Mounted



Use No. 6 Brackets To Hang Behind Beam Or Valance



### 4:3 VIDEO FORMAT DIMENSIONS (2" standard black drop at top)

Viewing Area H x W	Nominal Diagonal	Overall Case Length	Between Hanger Eyes	Approx. Shipping Wt. Lbs.
43" x 57"	72"	68"	66½"	37
50" x 67"	84"	78"	76½"	41
57" x 77"	96"	92"	90½"	48
60" x 80"	100"	92"	90½"	48
69" x 92"	120"	104"	102½"	52
87" x 116"	150"	128"	126½"	75
105" x 140"	180"	152"	150½"	92

### 16:9 HDTV FORMAT DIMENSIONS (2" standard black drop at top)

Viewing Area H x W	Nominal Diagonal	Overall Case Length	Between Hanger Eyes	Approx. Shipping Wt. Lbs.
45" x 80"	92"	92"	90½"	48
52" x 92"	106"	104"	102½"	51
54" x 96"	110"	108"	106½"	53
58" x 104"	119"	116"	114½"	56
65" x 116"	133"	128"	126½"	65
78" x 139"	159"	152"	150½"	85

### 16:10 WIDE FORMAT DIMENSIONS (2" standard black drop at top)

Viewing Area H x W	Nominal Diagonal	Overall Case Length	Between Hanger Eyes	Approx. Shipping Wt. Lbs.
50" x 80"	94"	92"	90½"	48
60" x 96"	113"	108"	106½"	53
69" x 110"	130"	122"	102½"	61
87" x 139"	164"	152"	150½"	85

### SQUARE FORMAT DIMENSIONS

(screens with ^ have 2" standard black drop at top)

Sizes H x W	Overall Case Length	Between Hanger Eyes	Approx. Shipping Wt. Lbs.
50" x 50"	58"	56½"	33
60" x 60"	68"	66½"	38
70" x 70"	78"	76½"	41
84" x 84"	92"	90½"	49
6' x 8'^A	104"	102½"	52
8' x 8'	104"	102½"	55
7' x 9'^A	116"	114½"	57
9' x 9'^A	116"	114½"	62
8' x 10'^A	128"	126½"	75
10' x 10'^A	128"	126½"	78
9' x 12'^A	152"	150½"	92

Overall case length dimensions ±¼".

Note: Custom formats and sizes available upon request.



## LARGE COSMOPOLITAN® ELECTROL®

## Wall or Ceiling Mounted Electric Projection Screen

When ordering, make appropriate selections:

1. Select size from charts at the lower right.
2. Select viewing surface:
  - Matte White
  - GREENGUARD® and GREENGUARD® Children and Schools Certified.
3. Options:
  - Extra Drop available to lower picture area more than normal. Specify total drop at top \_\_\_\_\_ (black or white) or at bottom \_\_\_\_\_ (black or white). 16' maximum total surface height including picture area.
  - No borders (Black masking borders standard).
  - Single Motor Low Voltage Control System (LVC) - external.
  - Single Motor Low Voltage Control System (LVC) - built-in.
  - Wireless Remote Control for LVC.
  - Radio Frequency Remote
    - Radio Frequency Range Extender available
  - Infrared Remote
  - Key Locking Cover Plate for 120V Switch or LVC Switch.
  - Key Operated Switch for 120V only (Note: Cannot be used with LVC).
  - 220 Volt (50 Hz) Motor.
  - Video Projector Interface Control - external.
  - External SCB-100 - RS-232 Serial Control Board
    - NET-100 Ethernet-Serial Adapter
  - Black case (white standard).
  - Veneer Case Cover (Choose from seven standard veneers).
    - Light Oak
    - Medium Oak
    - Natural Walnut
    - Heritage Walnut
    - Mahogany
    - Cherry
    - Honey Maple



- Large format motorized wall or ceiling mount screen.
- Included adjustable ceiling and wall mounting brackets streamline installation.
- Two piece aluminum case allows easy access to motor and roller.

## SUGGESTED SPECIFICATIONS:

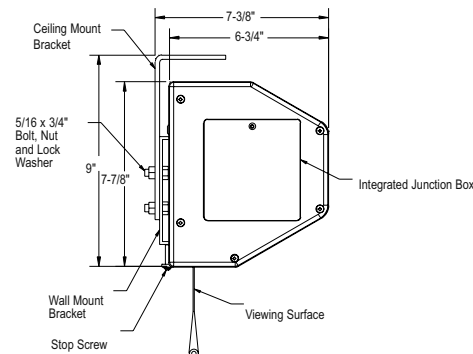
\_\_\_\_\_ projection screen(s), \_\_\_\_\_ (H) x \_\_\_\_\_ (W), electrically operated 120 volt (60 Hz) not more than 2.4 amp. Shall have specially designed motor mounted inside the roller to be three wire with ground quick reversal type, oiled for life, with automatic thermal overload cut-out, integral gears, capacitor and an electric brake to prevent coasting. To have pre-set but adjustable limit switches to automatically stop picture surface in the "up" and "down" positions. The roller to be of aluminum. Screen fabric to be flame retardant and mildew resistant fiberglass with black masking borders standard. Bottom of fabric shall be formed into a pocket holding a metal rod. Case to be a two-piece design made of extruded aluminum with a white, lightly textured powder coat finish. End caps to be plastic with integrated junction box. To be complete with three position control switch with cover plate. Screen to be listed by Underwriters' Laboratories.



Matte White: Seamless in all standard sizes.

Detailed dimensional drawings, wiring diagrams and installation instructions available upon request.

Specifications subject to change without notice.



## 4:3 VIDEO FORMAT DIMENSIONS (2" standard black drop at top)

Viewing Area H x W	Nominal Diagonal	Overall Case Length	Approx. Shipping Wt. Lbs.
120" x 160"	200"	173½"	210
123" x 164"	210"	177½"	225
141" x 188"	240"	201½"	254

## 16:9 HDTV FORMAT DIMENSIONS (2" standard black drop at top)

Viewing Area H x W	Nominal Diagonal	Overall Case Length	Approx. Shipping Wt. Lbs.
92" x 164"	188"	177½"	215
106" x 188"	216"	201½"	241

## SQUARE FORMAT DIMENSIONS (no standard black drop at top)

Sizes H x W	Overall Case Length	Approx. Shipping Wt. Lbs.
12' x 12'	153½"	194
14' x 14'	177½"	229
16' x 16'	201½"	263

Overall case length dimensions ±¼".

Note: Custom formats and sizes available upon request.



## DESIGNER CONTOUR® ELECTROL®

### Wall or Ceiling Mounted Electric Projection Screen

When ordering, make appropriate selections:

1. Select size from charts below.

2. Select viewing surface:

- Matte White
- High Contrast Matte White
- Video Spectra 1.5
- High Power

• GREENGUARD® and GREENGUARD® Children and Schools Certified.

3. Options:

- No borders (Black masking borders standard).
- Single Motor Low Voltage Control (LVC) – external.
- Single Motor Low Voltage Control (LVC) – built in (adds 5" to length of case).
- Wireless Remote Control for LVC.
  - Radio Frequency Remote.
    - Radio Frequency Range Extender available
  - Infrared Remote.
- Key Locking Cover Plate for 120V Switch or LVC Switch.
- Key Operated Switch for 120V only (Note: Cannot be used with LVC).
- 220 Volt (50 Hz) Motor.
- Video Projector Interface Control – external.
- External SCB-100 - RS-232 Serial Control Board
  - NET-100 Ethernet-Serial Adapter
- Veneer Case Cover (Choose from seven standard veneers).
  - Light Oak
  - Medium Oak
  - Natural Walnut
  - Heritage Walnut
  - Mahogany
  - Cherry
  - Honey Maple
- Graphite case color.
- Black case (white standard).



- A stylish curved aluminum extruded case.
- Dimensions of only 4 5/8" high and 4 3/32" deep, small enough to fit into any installation.
- Optional choice of seven veneer finishes for the front cover of the screen case for a warm and elegant look.

### SUGGESTED SPECIFICATIONS:

\_\_\_\_\_ projection screen(s), \_\_\_\_\_ (H) x \_\_\_\_\_ (W), electrically operated 120 volt (60 Hz) not more than 1.2 amp. Shall have specially designed motor mounted "inside the roller, to be three wire with ground, quick reversal type, oiled for life, with automatic thermal overload cutout, integral gears, capacitor and an electric brake to prevent coasting. To have preset but adjustable limit switches to automatically stop the picture surface in the "up" and "down" positions. The roller to be of rigid metal. Roller mounting brackets to be adjustable to allow centering or offsetting of the screen within the case. Screen case to be a two piece design made of extruded aluminum. Case to be finished in white, lightly textured powder coat. Screen fabric to be flame retardant and mildew resistant fiberglass with black masking borders standard. Bottom of fabric shall be formed into a pocket holding a metal rod. Screen to include a three-position control switch and cover plate. Screen to be listed by Underwriters' Laboratories.



Matte White, Video Spectra 1.5 and High Contrast Matte White: All sizes will be seamless.

High Power: Horizontal seam required when both dimensions exceed 6'.

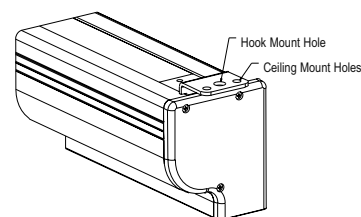
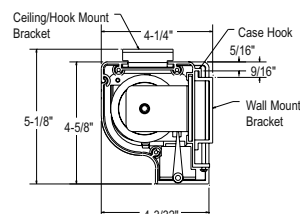
Detailed dimensional drawings, wiring diagrams and installation instructions available upon request.

Specifications subject to change without notice.

### OPTIONAL GRAPHITE CASE



### OPTIONAL VENEER CASE COVER



### 4:3 VIDEO FORMAT DIMENSIONS (2" standard black drop at top)

Viewing Area H x W	Nominal Diagonal	Overall Case Length	Approx. Shipping Wt. Lbs.
43" x 57"	72"	69 1/4"	34
50" x 67"	84"	79 1/4"	37
57" x 77"	96"	93 1/4"	42
60" x 80"	100"	93 1/4"	42
69" x 92"	120"	105 1/4"	47

### 16:9 HDTV FORMAT DIMENSIONS (2" standard black drop at top)

Viewing Area H x W	Nominal Diagonal	Overall Case Length	Approx. Shipping Wt. Lbs.
37 1/2" x 67"	77"	79 1/4"	37
45" x 80"	92"	93 1/4"	42
52" x 92"	106"	105 1/4"	47

### SQUARE FORMAT DIMENSIONS

(screens with ^ have 2" standard black drop at top)

Sizes H x W	Overall Case Length	Approx. Shipping Wt. Lbs.
50" x 50"	59 1/4"	28
60" x 60"	69 1/4"	34
70" x 70"	79 1/4"	37
84" x 84"	93 1/4"	42
6' x 8'^A	105 1/4"	47
8' x 8'	105 1/4"	48

Overall case length dimensions ± 1/4".

Note: Add 5" to overall case length for built-in LVC.

Note: Custom formats and sizes available upon request.



**DESIGNER CONTOUR® ELECTROL® with built-in infrared remote control****Wall or Ceiling Mounted Electric Projection Screen**

When ordering, make appropriate selections:

**1.** Select size from charts below.**2.** Select viewing surface:

- Matte White
- High Contrast Matte White
- Video Spectra 1.5
- High Power

GREENGUARD® and GREENGUARD® Children and Schools Certified.

**3.** Options:

- No borders (Black masking borders standard).
- Key Locking Cover Plate.
- 220 Volt (50 Hz) Motor.
- Veneer Case Cover (Choose from seven standard veneers).
- Light Oak
- Medium Oak
- Natural Walnut
- Heritage Walnut
- Mahogany
- Cherry
- Honey Maple
- Graphite case color.
- Black case (white standard).



- A stylish curved aluminum extruded case.
- Dimensions of only 4 3/8" high and 4 3/2" deep, small enough to fit into any installation.
- Built-in Infrared Remote Control.

**SUGGESTED SPECIFICATIONS:**

\_\_\_\_\_ projection screen(s), \_\_\_\_\_ (H) x \_\_\_\_\_ (W), electrically operated 120 volt (60 Hz) not more than 1.2 amp. Shall have specially designed motor mounted inside the roller, to be three wire with ground, quick reversal type, oiled for life, with automatic thermal overload cutout, integral gears, capacitor and an electric brake to prevent coasting. To have preset but adjustable limit switches to automatically stop the picture surface in the "up" and "down" positions. The roller to be of rigid metal. Roller mounting brackets to be adjustable to allow centering or offsetting of the screen within the case. Screen case to be a two piece design made of extruded aluminum. Case to be finished in white lightly textured powder coat. Screen fabric to be flame retardant and mildew resistant fiberglass with black masking borders standard. Bottom of fabric shall be formed into a pocket holding a metal rod. Screen to include a three-position control switch, cover plate and 10' power cord with 3-prong plug. Screen to be listed by Underwriters' Laboratories.

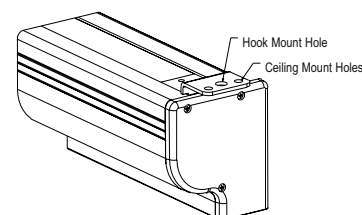
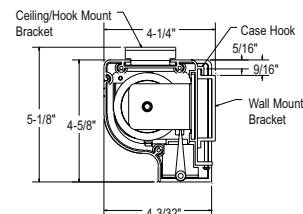


Matte White, Video Spectra 1.5 and High Contrast Matte White: All sizes will be seamless.

High Power: Horizontal seam required when both dimensions exceed 6'.

Detailed dimensional drawings, wiring diagrams and installation instructions available upon request.

Specifications subject to change without notice.

**OPTIONAL GRAPHITE CASE****OPTIONAL VENEER CASE COVER****4:3 VIDEO FORMAT DIMENSIONS (2" standard black drop at top)**

Viewing Area H x W	Nominal Diagonal	Overall Case Length	Approx. Shipping Wt. Lbs.
43" x 57"	72"	74 1/4"	36
50" x 67"	84"	84 1/4"	39
57" x 77"	96"	98 1/4"	44
60" x 80"	100"	98 1/4"	44
69" x 92"	120"	110 1/4"	49

**16:9 HDTV FORMAT DIMENSIONS (2" standard black drop at top)**

Viewing Area H x W	Nominal Diagonal	Overall Case Length	Approx. Shipping Wt. Lbs.
37 1/2" x 67"	77"	84 1/4"	39
45" x 80"	92"	98 1/4"	44
52" x 92"	106"	110 1/4"	49

**SQUARE FORMAT DIMENSIONS**

(screens with ^ have 2" standard black drop at top)

Sizes H x W	Overall Case Length	Approx. Shipping Wt. Lbs.
50" x 50"	64 1/4"	30
60" x 60"	74 1/4"	36
70" x 70"	84 1/4"	39
84" x 84"	98 1/4"	44
6' x 8'^A	110 1/4"	49
8' x 8'	110 1/4"	50

Overall case length dimensions  $\pm 1/4$ ".

Note: Custom formats and sizes available upon request.



## DESIGNER DA-TAB ELECTROL®

### Wall or Ceiling Mounted Electric Projection Screen

When ordering, make appropriate selections:

1. Select size from chart at the lower right.
2. Select viewing surface:
  - Da-Mat®
  - High Contrast Da-Mat®
  - Pearlescent
  - Cinema Vision
  - High Contrast Cinema Vision
  - Audio Vision
  - High Contrast Audio Vision
  - High Contrast Cinema Perf
  - Da-TeX® (Rear)
  - Dual Vision
  - GREENGUARD® and GREENGUARD® Children and Schools Certified.

#### 3. Select Case Style:

- Concord
- Lexington
- Cambridge
- Hamilton
- Lancaster
- Yorkshire

#### 4. Select a Finish:

Laminate: (Cambridge Only)

- Figured Mahogany
- Light Oak
- Gunstock Walnut
- Cherry
- Custom

Veneer:

- Light Oak
- Medium Oak
- Natural Walnut
- Heritage Walnut
- Mahogany
- Cherry
- Honey Maple
- Custom

#### 5. Options:

- Single motor Low Voltage Control (LVC) - external.
- Wireless Remote Control for LVC.
  - Radio Frequency Remote Control.
    - Radio Frequency Range Extender available
  - Infrared Remote Control.
- Silent Motor.
- Key Locking Cover Plate for 120V or LVC.
- Key Operated Switch for 120V only (NOTE: Cannot be used with LVC).
- 220 Volt (50 Hz) Motor.
- Video Projector Interface Control - external.
- External SCB-100 - RS-232 Serial Control Board
- NET-100 Ethernet-Serial Adapter



- Wood-encased electric screen.
- Choice of six case designs.
- Tab guide cable system holds screen surface flat.

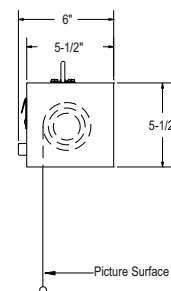
### SUGGESTED SPECIFICATIONS:

\_\_\_\_\_ projection screen(s), \_\_\_\_\_ (H) x \_\_\_\_\_ (W), electrically operated 120 volt (60 Hz) not more than 2.4 amp. To have seamless surface with black masking borders standard on flame retardant and mildew resistant fabric mounted on rigid metal roller. Each side of the fabric to have tab guide cable system to maintain even lateral tension and hold surface flat. Custom slat bar with added weight maintains vertical tension on the screen surface. The ends of the slat to be protected by heavy duty plastic caps enclosing a preset adjustable mechanism for screen tensioning. Shall have specially designed motor mounted inside the roller, to be three wire with ground, quick reversal type, oiled for life, with automatic thermal overload cutout, integral gears, capacitor and an electric brake to prevent coasting. To have preset but adjustable limit switches to automatically stop picture surface in the "up" and "down" position. Case to be wood finished in either veneer or laminate on all facing sides and painted on non-facing sides. The front of the case is easily removed for installation and access to motor limit switches and fabric. Sturdy mounting brackets installed for wall or ceiling installation. The front of the case is easily removed for installation and access to motor limit switches and fabric. To be complete with three position control switch with cover plate. Screen to be listed by Underwriters' Laboratories.

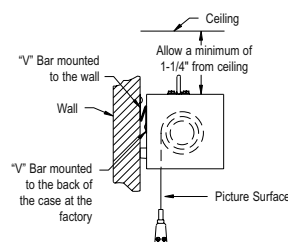


All viewing surfaces will be seamless.  
All viewing surfaces are standard with black backing except Da-TeX® and Dual Vision.

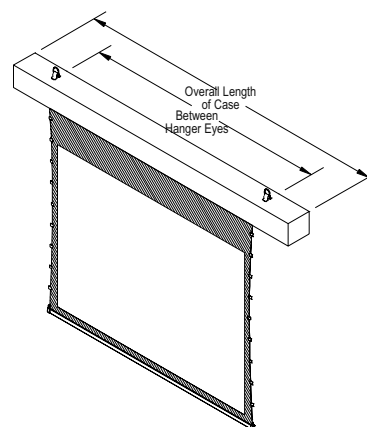
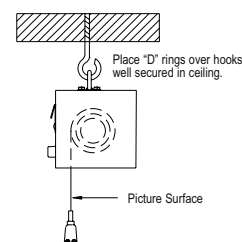
Detailed dimensional drawings, wiring diagrams and installation instructions available upon request. Specifications subject to change without notice.



#### Wall Mounting



#### Ceiling Mounting



#### 4:3 VIDEO FORMAT DIMENSIONS (2" standard black drop at top)

Viewing Area H x W	Nominal Diagonal	Overall Case Length	Between Hanger Eyes	Approx. Shipping Wt. Lbs.
43" x 57"	72"	78"	60"	80
50" x 67"	84"	89"	70"	90
60" x 80"	100"	103"	84"	105
69" x 92"	120"	117"	96"	120

Overall case length dimensions  $\pm 1/4$ ".

Note: All sizes come standard with 12" black drop at top.

Note: Custom formats and sizes available upon request.



## DESIGNER ELECTROL®

## Wall or Ceiling Mounted Electric Projection Screen

When ordering, make appropriate selections:

1. Select size from charts at the lower right.
2. Select viewing surface:
  - Matte White
  - High Power
  - GREENGUARD® and GREENGUARD® Children and Schools Certified.

3. Select Case Style:

- Concord
- Lexington
- Cambridge
- Hamilton
- Lancaster
- Yorkshire

4. Select a Finish:

- Laminate: (Cambridge Only)
- Figured Mahogany
- Light Oak
- Gunstock Walnut
- Cherry
- Custom Veneer:
- Light Oak
- Medium Oak
- Natural Walnut
- Heritage Walnut
- Mahogany
- Cherry
- Honey Maple
- Custom

5. Options:

- Single motor Low Voltage Control (LVC) - external.
- Wireless Remote Control for LVC.
- Radio Frequency Remote Control.
- Radio Frequency Range Extender available
- Infrared Remote Control.
- Silent Motor.
- Key Locking Cover Plate for 120V or LVC.
- Key Operated Switch for 120V only (Cannot be used with LVC).
- No borders (Black masking borders standard).
- 220 Volt (50 Hz) motor.
- Video Projector Interface Control - external.
- External SCB-100 - RS-232 Serial Control Board
- NET-100 Ethernet-Serial Adapter



- Wood-encased electric screen.
- Choice of six case designs.

## SUGGESTED SPECIFICATIONS:

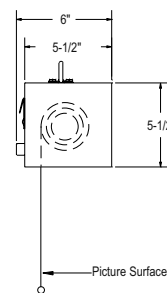
\_\_\_\_\_ projection screen(s), \_\_\_\_\_ (H) x \_\_\_\_\_ (W), electrically operated 120 V (60 Hz) not more than 2.4 amp. Shall have specifically designed motor mounted inside the roller, to be three wire with ground quick reversal type, oiled for life, with automatic thermal overload cut-out, integral gears, capacitor and an electric brake to prevent coasting. To have pre-set but adjustable limit switches to automatically stop picture surface in the "up" and "down" positions. The roller to be rigid metal. Screen fabric to be seamless, flame retardant and mildew resistant fiberglass with black masking borders standard. Bottom of fabric shall be formed into a pocket holding a metal rod. Case to be wood finished in either veneer or laminate on all facing sides and painted on non-facing sides. The front of the case is easily removed for installation and access to motor limit switches and fabric. Sturdy mounting brackets installed for wall or ceiling installation. To be complete with three position control switch with cover plate. Screen to be listed by Underwriters' Laboratories.



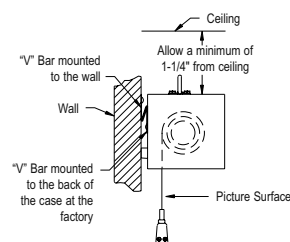
**Matte White:** Seamless in all standard sizes.

**High Power:** Horizontal seam required when both dimensions exceed 6'.

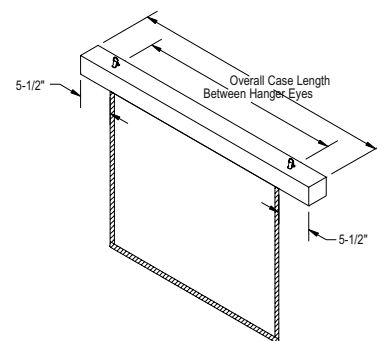
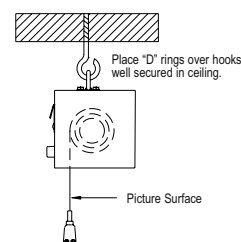
Detailed dimensional drawings, wiring diagrams and installation instructions available upon request. Specifications subject to change without notice.



## Wall Mounting



## Ceiling Mounting



## 4:3 VIDEO FORMAT DIMENSIONS (2" standard black drop at top)

Viewing Area H x W	Nominal Diagonal	Overall Case Length	Between Hanger Eyes	Approx. Shipping Wt. Lbs.
50" x 67"	84"	81"	70"	56
60" x 80"	100"	95"	84"	67
69" x 92"	120"	107"	96"	77

## SQUARE FORMAT DIMENSIONS (no standard black drop at top)

Sizes H x W	Overall Case Length	Between Hanger Eyes	Approx. Shipping Wt. Lbs.
70" x 70"	81"	70"	60
84" x 84"	95"	84"	70
96" x 96"	107"	96"	80

Overall case length dimensions  $\pm 1/4$ ".

**Note:** Custom formats and sizes available upon request.





# TENSIONED EXECUTIVE ELECTROL®

## Concealed with Closure Doors Electric Projection Screen

When ordering, make appropriate selections:

- 1 Select size from charts at the lower right.
- 2 Select viewing surface:
  - Da-Mat®
  - High Contrast Da-Mat®
  - Cinema Vision®
  - High Contrast Cinema Vision®
  - Pearlescent®
  - Audio Vision®
  - High Contrast Audio Vision®
  - High Contrast Cinema Perf®
  - Da-Tex® (Rear)
  - Dual Vision®
  - GREENGUARD® and GREENGUARD® Children and Schools Certified.

- 3 Select method of installation:
  - Type 1 and 2-Flush or Offset Mounting.
  - Type 3-Extended Mounting.

- 4 Options:
  - Single motor Low Voltage Control (LVC) - external.
  - Wireless Remote Control for LVC.
  - Radio Frequency Remote
    - Radio Frequency Range Extender available
  - Infrared Remote
  - Key Locking Cover Plate for 120V or LVC Switch.
  - Key Operated Switch for 120V only (NOTE: Cannot be used with LVC).
  - 220 Volt (50 Hz) motor.
  - Video Projector Interface Control - external.
  - External SCB-100 - RS-232 Serial Control Board
  - NET-100 Ethernet-Serial Adapter
  - White box (black standard).
  - White doors (brushed aluminum standard).



- Install in the ceiling with closure doors to conceal screen between uses.
- Doors may be finished to match ceiling.
- Tab guide cable system holds screen surface flat.

## SUGGESTED SPECIFICATIONS:

\_\_\_\_\_ projection screen(s), \_\_\_\_\_ (H) x \_\_\_\_\_ (W), electrically operated 120 volt (60 Hz) not more than 2.2 amp. Three wire quick reversal motor especially designed for the purpose, to be ball bearing and oiled for life. With automatic thermal overload cut-out and integral interlocking gears. To have pre-set but adjustable limit switches to automatically stop screen surface in the "down" position. Stop action to be positive to prevent coasting. The roller to be of rigid metal at least 3" in diameter and mounted on two heavy duty brackets equipped with self-aligning bearings. Screen surface to be seamless, flame retardant and mildew resistant vinyl with black masking borders standard. Each side of the fabric to have tab guide cable system to maintain even lateral tension and hold surface flat. Custom slat bar with added weight maintains vertical tension on the screen surface. The ends of the slat to be protected by heavy duty plastic caps enclosing a preset adjustable mechanism for screen tensioning. Case to be of wood, with double top for extra rigidity and strength. Motor compartment to be metal lined. A section of the bottom of the case shall be equipped with hinges and connected to the drive mechanism so that it opens and closes automatically with the lowering and raising of the screen surface. The door will lift to the closed position where a micro switch shall cut off the electrical current to the motor. Balance of the bottom panel shall be pegged to manual opening to provide access. Hinges shall be mounted to allow matching of the bottom panel to the ceiling. (Specify Type 1 and 2 or Type 3 hinge, as required.) Case to be finished with a black primer coat, ready to accept final finish by others. To be complete with three position control switch with cover plate. Screen to be listed by Underwriters' Laboratories and CSA.



All viewing surfaces will be seamless.

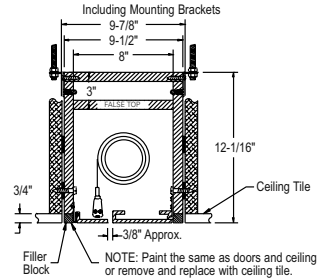
Audio Vision, High Contrast Audio Vision and High Contrast Cinema Perf available in sizes up to 87" x 116" in Video Format and 78" x 139" in HDTV Format.

All viewing surfaces are standard with black backing except Da-Tex® and Dual Vision.

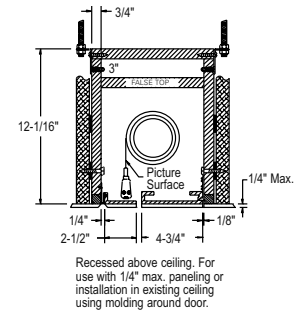
Detailed dimensional drawings, wiring diagrams and installation instructions available upon request. Specifications subject to change without notice.

The Tensioned Executive Electrol® is shipped with 3/4" wood molding strips mounted to the bottom edge of the screen case. TYPE 3 ONLY: These strips must be removed to facilitate installation.

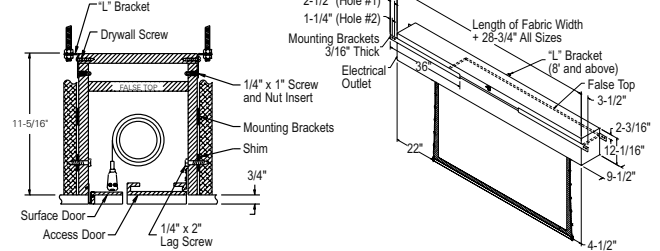
## Type 1 and 2 Offset Mounting



## Type 1 and 2 Flush Mounting



## Type 3 Extended Mounting



## 4:3 VIDEO FORMAT DIMENSIONS

Viewing Area H x W	Nominal Diagonal	Overall Case Length*	Approx. Shipping Wt. Lbs.
43" x 57"	72"	92 3/4"	156
50" x 67"	84"	103 3/4"	183
60" x 80"	100"	117 3/4"	211
69" x 92"	120"	131 3/4"	244
87" x 116"	150"	158 3/4"	279
108" x 144"	180"	183 3/4"	323
120" x 160"	200"	200 3/4"	353

## 16:9 HDTV FORMAT DIMENSIONS

Viewing Area H x W	Nominal Diagonal	Overall Case Length*	Approx. Shipping Wt. Lbs.
45" x 80"	92"	116 1/4"	211
52" x 92"	106"	128 3/4"	244
54" x 96"	110"	133 3/4"	250
58" x 104"	119"	141 3/4"	261
65" x 116"	133"	154 3/4"	279
78" x 139"	159"	179 3/4"	300

## SQUARE FORMAT DIMENSIONS

Sizes H x W	Overall Case Length*	Approx. Shipping Wt. Lbs.
50" x 50"	86 3/4"	140
60" x 60"	97 3/4"	155
70" x 70"	109 1/4"	183
84" x 84"	125 3/4"	211
6' x 8'	135 3/4"	244
8' x 8'	139 1/4"	244
7' x 9'	149 3/4"	267
9' x 9'	148 1/4"	267
8' x 10'	163 1/4"	279
10' x 10'	160 1/4"	279
9' x 12'	183 3/4"	323
12' x 12'	193 1/4"	328

Overall case length dimensions  $\pm 1/4$ ".

\*Add 7" to overall length for mounting brackets.

Note: All sizes come standard with 12" black drop at top.

Note: Custom formats and sizes available upon request.



## EXECUTIVE ELECTROL®

Concealed with Closure Doors  
Electric Projection Screen

When ordering, make appropriate selections:

1. Select size from chart at the lower right.
2. Select viewing surface:
  - Matte White
  - High Power
  - GREENGUARD® and GREENGUARD® Children and Schools Certified.
3. Select method of installation:
  - Type 1 and 2-Flush or Offset Mounting.
  - Type 3-Extended Mounting.
4. Options:
  - Extra Drop available to lower picture area more than normal. Specify total drop at top \_\_\_\_\_ (black or white) or at bottom \_\_\_\_\_ (black or white). 20' maximum total surface height including picture area.
  - Single motor low voltage control (LVC) - external.
  - Wireless Remote Control for LVC.
    - Radio Frequency Remote
    - Radio Frequency Range Extender available
    - Infrared Remote
  - Key Locking Cover Plate for 120V or LVC Switch.
  - Key Operated Switch for 120V only (NOTE: cannot be used with LVC).
  - No Borders (Black masking borders standard).
  - 220 Volt (50 Hz) Motor.
  - Video Projector Interface Control - external.
  - External SCB-100 - RS-232 Serial Control Board
    - NET-100 Ethernet-Serial Adapter
  - White box (black standard).
  - White doors (brushed aluminum standard).



- Install in the ceiling with closure doors to conceal screen between uses.
- Doors may be finished to match ceiling.

## SUGGESTED SPECIFICATIONS:

\_\_\_\_\_ projection screen(s), \_\_\_\_\_ (H) x \_\_\_\_\_ (W), electrically operated 120 volt AC (60 Hz) not more than 2.2 amp. Three wire quick reversal motor especially designed for the purpose, to be ball bearing and oiled for life. With automatic thermal overload cut-out and integral interlocking gears. To have pre-set but accessible limit switches to automatically stop screen surface in the "down" position. Stop action to be positive to prevent coasting. The roller to be of rigid metal at least 3" in diameter (to be used on screens 12' and under in width) or 5 3/4" in diameter (on screens over 12' in width). Roller to be mounted on two heavy duty brackets equipped with self-aligning bearings. Screen surface to be flame retardant and mildew resistant fiberglass with black masking borders standard. Case to be of wood, with double top for extra rigidity and strength. Motor compartment to be metal lined. A section of the bottom of the case shall be equipped with hinges and connected to the drive mechanism so that it opens and closes automatically with the lowering and raising of the screen surface. The door will lift to the closed position where a micro switch shall cut off the electrical current to the motor. Balance of the bottom panel shall be pegged to manual opening to provide access. Hinges shall be mounted to allow matching of the bottom panel to the ceiling. **Specify Type 1 and 2 or Type 3 hinge, as required.** Case to be furnished with a black primer coat, ready to accept final finish by others. To be complete with 3 position control switch with cover plate. Recessed installation requires access to motor. Screen shall be listed by Underwriters' Laboratories and CSA.



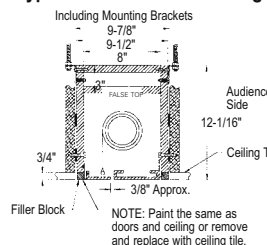
**Matte White:** Seamless in all standard sizes.

**High Power:** Available in sizes up to 9' x 12'. Horizontal seam required when both dimensions exceed 6'.

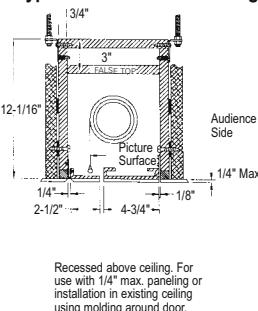
Detailed dimensional drawings, wiring diagrams and installation instructions available upon request. Specifications subject to change without notice.

The Executive Electrol® is shipped with 3/4" wood molding strips mounted to the bottom edge of the screen case. TYPE 3 ONLY: These strips must be removed to facilitate installation.

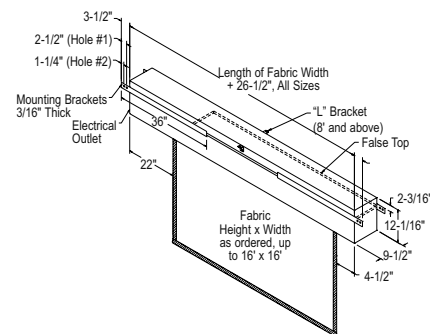
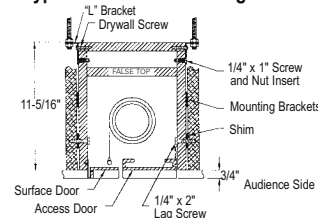
## Type 1 and 2 Offset Mounting



## Type 1 and 2 Flush Mounting



## Type 3 Extended Mounting



## SQUARE FORMAT DIMENSIONS

(screens with ^ have 2" standard black drop at top)

Sizes H x W	Overall Case Length*	Approx. Shipping Wt. Lbs.
50" x 50"	76 1/2"	144
60" x 60"	86 1/2"	154
70" x 70"	96 1/2"	164
84" x 84"	110 1/2"	184
6' x 8'^A	122 1/2"	209
8' x 8'	122 1/2"	211
7' x 9'^A	134 1/2"	234
9' x 9'^A	134 1/2"	237
8' x 10'^A	146 1/2"	260
10' x 10'^A	146 1/2"	263
9' x 12'^A	170 1/2"	311
12' x 12'	170 1/2"	316
10'6" x 14'^A	194 1/2"	403
14' x 14'	194 1/2"	410
12' x 16'^A	218 1/2"	459
16' x 16'	218 1/2"	469

Overall case length dimensions ± 1/4".

\*Add 7" to case length for mounting brackets.

**Note:** Custom formats and sizes available upon request.



# SENIOR ELECTROL®

## Wall or Ceiling Mounted or Ceiling Recessed Electric Projection Screen

When ordering, make appropriate selections:

1. Select size from charts at the lower right.

2. Select viewing surface:

- Matte White
- Video Spectra 1.5
- High Power
- GREENGUARD® and GREENGUARD® Children and Schools Certified.

3. Options:

- Extra Drop available to lower picture area more than normal. Specify total drop at top (black or white) or at bottom (black or white). 20' maximum total surface height including picture area, except 12'x24', where no extra drop is available.
- No borders (Black masking borders standard).
- Single Motor Low Voltage Control (LVC) - external.
- Wireless Remote Control for LVC.
  - Radio Frequency Remote
  - Radio Frequency Range Extender available
  - Infrared Remote
- Key Locking Cover Plate for 120V or LVC switch.
- Key Operated Switch for 120V only (NOTE: Cannot be used with LVC).
- 220 Volt (50 Hz) motor.
- Video Projector Interface Control - external.
- External SCB-100 - RS-232 Serial Control Board
- NET-100 Ethernet-Serial Adapter
- White box (black standard).

## DO NOT SEAL IN—ALLOW ACCESS

Recessed installation requires access to motor and screen roller.

## FOR EXPOSED INSTALLATION

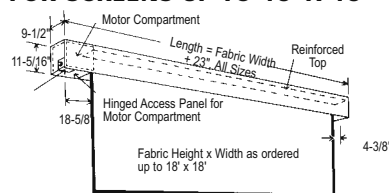
If the screen is to be mounted in an exposed position, it may be covered with finished plywood, veneer paneling, plastic wall covering or a valance.

Detailed dimensional drawings, wiring diagrams and installation instructions available upon request. Specifications subject to change without notice.

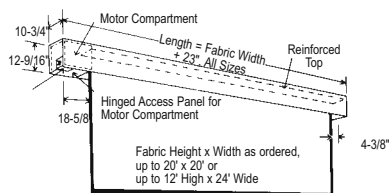


- Heavy-duty screen for exposed or recessed installation.
- Ideal for auditorium, stage or any other large screen application.

## FOR SCREENS UP TO 18' X 18'



## FOR SCREENS 20' AND LARGER IN HEIGHT OR WIDTH



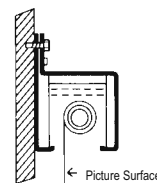
## SUGGESTED SPECIFICATIONS:

\_\_\_\_\_ projection screen(s), \_\_\_\_\_ (H) x \_\_\_\_\_ (W), electrically operated 120 volt AC (60 Hz) not more than 2.2 amp. Three wire quick reversal motor to be especially designed for the purpose, to be ball bearing and oiled for life, with automatic thermal overload cutout and integral interlocking gears. To have pre-set but adjustable limit switches to automatically stop screen fabric in the "up" and "down" position. Stop action to be positive to prevent coasting. Rigid metal roller at least 3" in diameter (to be used on screens 12' and under in width), 5 3/4" in diameter (on screens 14'-18' in width) or 7" in diameter (on screens where either height or width equal or exceed 20'). Roller to be mounted on two heavy duty brackets equipped with self aligning bearings. Screen surface to be flame retardant and mildew resistant with black masking borders standard. Case to be of wood, with double top for extra rigidity and strength. Motor compartment to be metal lined. Case to be finished with a black primer coat, ready to accept final finish by others. Heavy metal brackets shall be supplied for mounting screen to wall or ceiling. To be complete with 3 position control switch with cover plate. Recessed installation requires access to motor. Screen to be listed by Underwriters' Laboratories and CSA.

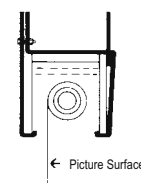


Matte White: Horizontal seam required when both dimensions exceed 16'.  
Video Spectra 1.5: Available in sizes where both dimensions do not exceed 8'.  
High Power: Available in sizes up to 9' x 12'. Horizontal seam required when both dimensions exceed 6'.

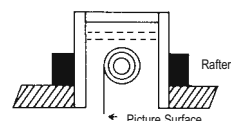
## Wall Type Hanger



## Ceiling Type Hanger



## Recessed Above Ceiling



## 4:3 VIDEO FORMAT DIMENSIONS (2" standard black drop at top)

Viewing Area H x W	Nominal Diagonal	Overall Case Length	Approx. Shipping Wt. Lbs.
50" x 67"	84"	93"	133
60" x 80"	100"	107"	146
69" x 92"	120"	119"	156
87" x 116"	150"	143"	192
105" x 140"	180"	167"	246
123" x 164"	210"	191"	343
141" x 188"	240"	215"	398

## 16:9 HDTV FORMAT DIMENSIONS (2" standard black drop at top)

Viewing Area H x W	Nominal Diagonal	Overall Case Length	Approx. Shipping Wt. Lbs.
45" x 80"	92"	107"	154
52" x 92"	106"	119"	162
54" x 96"	110"	123"	168
58" x 104"	119"	131"	173
65" x 116"	133"	143"	188
78" x 139"	159"	167"	195
92" x 164"	188"	191"	343
106" x 188"	216"	215"	384
119" x 212"	243"	239"	398
133" x 236"	271"	263"	838

## SQUARE FORMAT DIMENSIONS

(screens with ^ have 2" standard black drop at top)

Sizes H x W	Overall Case Length	Approx. Shipping Wt. Lbs.
50" x 50"	73"	122
60" x 60"	83"	128
70" x 70"	93"	133
84" x 84"	107"	146
6' x 8'^A	119"	156
8' x 8'	119"	158
7' x 9'^A	131"	173
9' x 9'^A	131"	176
8' x 10'^A	143"	192
10' x 10'^A	143"	195
9' x 12'^A	167"	246
12' x 12'	167"	251
10'6" x 14'^A	191"	343
14' x 14'	191"	350
12' x 16'^A	215"	384
16' x 16'	215"	394
13'6" x 18'	239"	398
18' x 18'	239"	411
15' x 20'^A	263"	838
20' x 20'	263"	858
12' x 24'	311"	1011

Overall case length dimensions ±1/4".

Note: Custom formats and sizes available upon request.



## ASCENDER® ELECTROL®

## Concealed or Surface Floor Mounted Electric Projection Screen

When ordering, make appropriate selections:

1. Select size from charts at the lower right.
2. Select viewing surface:
  - Matte White
  - Video Spectra 1.5
  - High Power
  - GREENGUARD® and GREENGUARD® Children and Schools Certified.
3. Options:
  - No borders (Black masking borders standard).
  - Wireless Remote Control.
    - Radio Frequency Remote
    - Radio Frequency Range Extender available
  - Infrared Remote
  - Key Locking Cover Plate for LVC Switch.
  - 220 Volt (50 Hz) Motor.
  - White box and door (black standard).



Figure 1

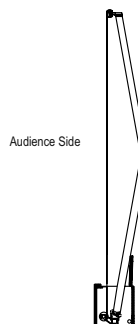
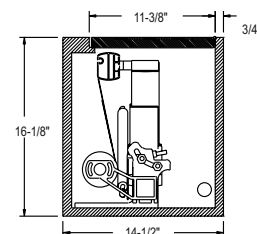


Figure 2



- Patented in-the-roller mounting system for quiet operation.
- Motorized spring assisted scissor mechanism ensures smooth performance.
- Trap door hides the screen and mechanism until needed.
- Engineered safety feature will not allow the screen surface to rise if the door is obstructed.

## SUGGESTED SPECIFICATIONS:

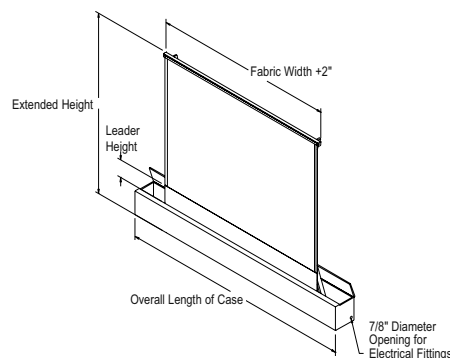
\_\_\_\_\_ projection screen(s),  
 \_\_\_\_\_ (H) x \_\_\_\_\_ (W),  
 electrically operated 120 volt (60 Hz) not more than 2.4 amp. Fabric to be flame retardant and mildew resistant fiberglass with black masking borders standard. To be mounted on rigid steel roller. Screen to be raised vertically by two spring loaded aluminum arms. Shall have specially designed motor mounted inside the roller, to be three wire with ground, quick reversal type, oiled for life, with automatic thermal overload cutout, integral gears, capacitor and an electric brake to prevent coasting. To have preset but adjustable limit switches to automatically stop picture surface in the "up" and "down" position. Case to be made of 3/4" wood and finished with a black primer coat, ready to accept final finish by others. Top of case and lid to be covered with black laminate. Safety features to include a lid switch to reverse and stop the screen from rising if the lid does not open. Screen to be operated by low voltage control unit, momentary contact rocker switch, and inputs for optional infrared or radio frequency remote control. To be listed by Underwriters' Laboratories.



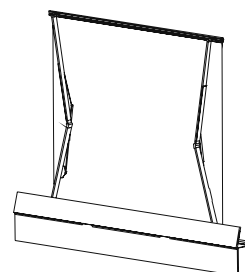
**Matte White:** Seamless in all standard sizes.  
**Video Spectra 1.5:** Available in sizes where both dimensions do not exceed 8'.  
**High Power:** Available in sizes up to 9'x12'.  
 Horizontal seam required when both dimensions exceed 6'.

Detailed dimensional drawings, wiring diagrams and installation instructions available upon request. Specifications subject to change without notice.

Front View



Back View



## 4:3 VIDEO FORMAT DIMENSIONS

Viewing Area H x W	Nominal Diagonal	Overall Case Length	Extended Height	Leader Height	Approx. Shipping Wt. Lbs.
60" x 80"	100"	130"	94"	15"	485
69" x 92"	120"	130"	100"	12"	490
87" x 116"	150"	158"	117"	11"	585
105" x 140"	180"	178"	139"	15"	654
120" x 160"	200"	178"	146"	6"	660

## 16:9 HDTV FORMAT DIMENSIONS

Viewing Area H x W	Nominal Diagonal	Overall Case Length	Extended Height	Leader Height	Approx. Shipping Wt. Lbs.
52" x 92"	106"	130"	86"	15"	480
58" x 104"	119"	130"	92"	15"	485
65" x 116"	133"	134"	99"	15"	500
78" x 139"	159"	158"	112"	15"	600

Overall case length dimensions  $\pm 1/4$ ".

12" clearance required from back of screen housing for clearance of extension arms.



# TENSIONED HORIZON ELECTROL®

## Concealed without Doors Masking Electric Projection Screen

When ordering, make appropriate selections:

1. Select size from chart at the lower right.
2. Select viewing surface:
  - Da-Mat®
  - High Contrast Da-Mat®
  - Cinema Vision®
  - High Contrast Cinema Vision®
  - Pearlescent®
  - Audio Vision®
  - High Contrast Audio Vision®
  - High Contrast Cinema Perf®
  - Da-Tex® (Rear)
  - Dual Vision®
  - GREENGUARD® and GREENGUARD® Children and Schools Certified.
3. Options:
  - 220 Volt (50Hz) Motor.
  - Infrared Wireless Remote Control.
  - Radio Frequency Wireless Remote Control.
  - Radio Frequency Range Extender available
  - White box (black standard).
  - Silent Motor.



- Multiple format screen (4:3, 16:9, 1.85:1, and 2.35:1).
- Preset aspect ratios.
- Tab guide cable system holds screen surface flat.

### SUGGESTED SPECIFICATIONS:

\_\_\_\_\_ projection screen(s),  
 \_\_\_\_\_ (H) x \_\_\_\_\_ (W),  
 electrically operated 120 volt (60 Hz) not more than 2.2 amp. Shall have two specially designed motors mounted inside two rollers, to be three wire with ground quick reversal type, oiled for life, with automatic thermal overload cutout, integral gears, capacitor, embedded microprocessor control and an electric brake to prevent coasting. To have preset but adjustable limit switches to automatically stop the picture surfaces in the "up" and "down" positions. Shall have electronic controller to adjust to three intermediate positions. The fabric roller to be of rigid aluminum. The mask roller to be of rigid aluminum. Screen fabric to be seamless, flame-retardant and mildew resistant vinyl with black masking borders standard. Each side of the fabric to have tab guide cable system to maintain even lateral tension and hold surface flat. To have masking fabric to convert the screen to different aspect ratios. Custom slat bar with added weight maintains vertical tension on the screen surface. The ends of the aluminum slat to be protected by heavy-duty plastic caps enclosing a preset adjustable mechanism for screen tensioning. Bottom of the masking fabric shall be sewn into a pocket holding a metal rod. Case to be of wood and be finished with a black primer coat, ready to accept final finish by others. To be complete with a six-button switch with a cover plate. Screen to be listed by Underwriters' Laboratories.

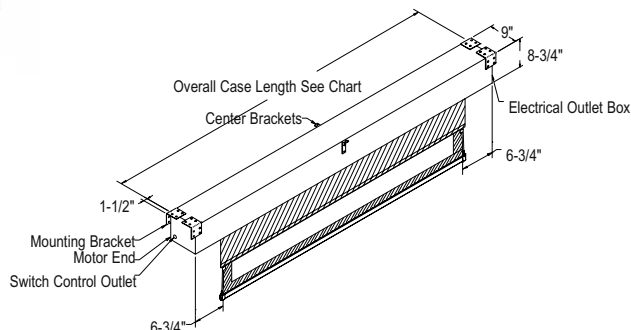


All viewing surfaces will be seamless.

Audio Vision, High Contrast Audio Vision and High Contrast Cinema Perf available in sizes up to 87" x 116" in Video Format.

All viewing surfaces are standard with black backing except Da-Tex® and Dual Vision.

Detailed dimensional drawings, wiring diagrams and installation instructions available upon request. Specifications subject to change without notice.



### NTSC(1.33:1) NATIVE ASPECT RATIO DIMENSIONS

NTSC H x W	HDTV H x W	Letterbox H x W	Cinemascope H x W	Overall Case Length*	Approx. Shipping Wt. Lbs.
43" x 57"	32" x 57"	31" x 57"	24" x 57"	79¾"	87
50" x 67"	38" x 67"	36" x 67"	29" x 67"	90¾"	101
60" x 80"	45" x 80"	43" x 80"	34" x 80"	104¾"	121
69" x 92"	52" x 92"	50" x 92"	39" x 92"	118¾"	138
87" x 116"	65" x 116"	63" x 116"	49½" x 116"	145¾"	177
108" x 144"	81" x 144"	78" x 144"	61" x 144"	170¾"	198

### HDTV(1.78:1) NATIVE ASPECT RATIO DIMENSIONS

HDTV H x W	Letterbox H x W	Cinemascope H x W	Overall Case Length*	Approx. Shipping Wt. Lbs.
32" x 57"	31" x 57"	24" x 57"	78¾"	87
38" x 67"	36" x 67"	29" x 67"	89¾"	101
45" x 80"	43" x 80"	34" x 80"	103¾"	121
52" x 92"	50" x 92"	39" x 92"	115¾"	138
65" x 116"	63" x 116"	49½" x 116"	141¾"	177
81" x 144"	78" x 144"	61" x 144"	167¾"	198

Overall case length dimensions ±¼".

\*Add 3" overall length of case for mounting brackets.

**Note:** Custom sizes available upon request. All sizes come standard with 12" black drop at top.



## HORIZON ELECTROL®

### Concealed without Doors Masking Electric Projection Screen

When ordering, make appropriate selections:

1. Select size from chart at the lower right.
2. Select viewing surface:
  - Matte White
  - High Contrast Matte White
  - Video Spectra 1.5
  - High Power
  - GREENGUARD® and GREENGUARD® Children and Schools Certified.
3. Options:
  - Extra Drop available to lower picture area more than normal. Specify total drop at top \_\_\_\_\_ (black or white) or at bottom \_\_\_\_\_ (black or white). 11' maximum total surface height including picture area.
  - 220 Volt (50 Hz) Motor.
  - Infrared Wireless Remote Control.
  - Radio Frequency Wireless Remote Control.
    - Radio Frequency Range Extender available
  - White box (black standard).
  - Silent Motor.



- Multiple format screen (4:3, 16:9, 1.85:1, and 2.35:1).
- Preset aspect ratios.

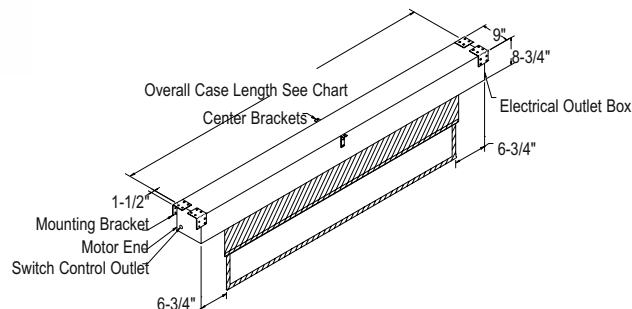
### SUGGESTED SPECIFICATIONS:

\_\_\_\_\_ projection screen(s),  
 \_\_\_\_\_ (H) x \_\_\_\_\_ (W),  
 electrically operated 120 volt (60 Hz) not more than 2.2 amp. Shall have two specially designed motors mounted inside two rollers, to be three wire with ground quick reversal type, oiled for life, with automatic thermal overload cutout, integral gears, capacitor, embedded microprocessor control and an electric brake to prevent coasting. To have preset but adjustable limit switches to automatically stop the picture surfaces in the "up" and "down" positions. Shall have electronic controller to adjust to three intermediate positions. The rollers to be of rigid metal. Screen fabric to be flame-retardant and mildew resistant fiberglass with black masking borders standard. To have masking fabric to convert the screen to different aspect ratios. Bottom of fabric to be formed into a pocket holding a metal rod. The ends of the rod shall be protected by heavy-duty plastic caps. Bottom of the masking fabric shall be sewn into a pocket holding a metal rod. Case to be of wood and be finished with a black primer coat, ready to accept final finish by others. To be complete with a six-button switch with a cover plate. Screen to be listed by Underwriters' Laboratories.



Matte White: Seamless in all standard sizes.  
 Video Spectra 1.5 and High Contrast Matte White: Available in sizes where both dimensions do not exceed 8'.  
 High Power: Horizontal seam required when both dimensions exceed 6'.

Detailed dimensional drawings, wiring diagrams and installation instructions available upon request. Specifications subject to change without notice.



### NTSC(1.33:1) NATIVE ASPECT RATIO DIMENSIONS

NTSC H x W	HDTV H x W	Letterbox H x W	Cinemascope H x W	Overall Case Length*	Approx. Shipping Wt. Lbs.
43" x 57"	32" x 57"	31" x 57"	24" x 57"	74½"	85
50" x 67"	38" x 67"	36" x 67"	29" x 67"	84½"	98
60" x 80"	45" x 80"	43" x 80"	34" x 80"	97½"	117
69" x 92"	52" x 92"	50" x 92"	39" x 92"	109½"	133
87" x 116"	65" x 116"	63" x 116"	49½" x 116"	133½"	172
105" x 140"	79" x 140"	76" x 140"	59½" x 140"	157½"	193

### HDTV(1.78:1) NATIVE ASPECT RATIO DIMENSIONS

HDTV H x W	Letterbox H x W	Cinemascope H x W	Overall Case Length*	Approx. Shipping Wt. Lbs.
32" x 57"	31" x 57"	24" x 57"	74½"	85
38" x 67"	36" x 67"	29" x 67"	84½"	98
45" x 80"	43" x 80"	34" x 80"	97½"	117
52" x 92"	50" x 92"	39" x 92"	109½"	133
65" x 116"	63" x 116"	49½" x 116"	133½"	172
79" x 140"	76" x 140"	59½" x 140"	157½"	193

Overall dimensions ±¼".

\*Add 3" overall length of case for mounting brackets.

**Note:** All screen sizes listed are viewing areas. Custom sizes available upon request. All sizes come standard with 2" black drop at top.



# TENSIONED DUAL MASKING ELECTROL®

## Concealed without Doors Masking Electric Projection Screen

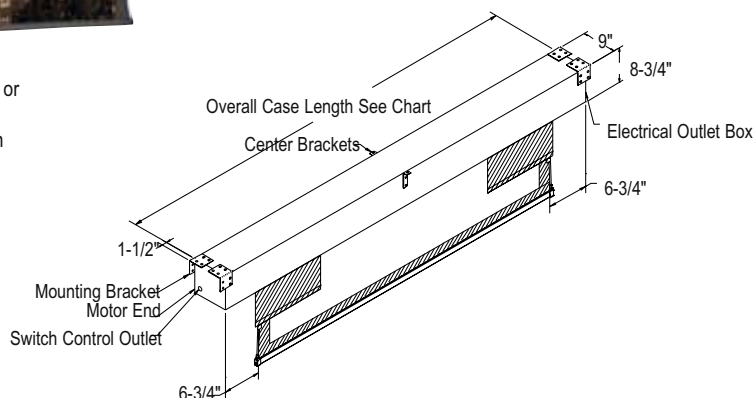
When ordering, make appropriate selections:

- Select size from charts at the lower right.
- Select viewing surface:
  - Da-Mat®
  - High Contrast Da-Mat®
  - Cinema Vision®
  - High Contrast Cinema Vision®
  - Pearlescent®
  - Audio Vision®
  - High Contrast Audio Vision®
  - High Contrast Cinema Perf®
  - Da-Tex® (Rear)
  - Dual Vision®
  - GREENGUARD® and GREENGUARD® Children and Schools Certified.

- Options:
  - Dual Motor Low Voltage Control System (DMC).
  - Wireless Remote Control for DMC.
    - Radio Frequency Remote.
    - Radio Frequency Range Extender available
    - Infrared Remote.
  - 220 Volt (50Hz) Motor.
  - White box (black standard).
  - Silent Motor.



- Dual-motor electric screen.
- View from Letterbox to NTSC format or from HDTV to NTSC format.
- Tab guide cable system holds screen surface flat.



## SUGGESTED SPECIFICATIONS:

\_\_\_\_\_ projection screen(s), \_\_\_\_\_ (H) x \_\_\_\_\_ (W), electrically operated 120 volt (60 Hz) not more than 4.8 amp. Shall have two specially designed motors mounted inside two rollers, to be three wire with ground quick reversal type, oiled for life, with automatic thermal overload cutout, integral gears, capacitor and an electric brake to prevent coasting. To have pre-set limit switches to automatically stop picture surfaces in the "up" and "down" positions. The fabric roller to be of rigid aluminum. The mask roller to be of rigid metal. Screen fabric to be seamless, flame retardant and mildew resistant vinyl with black masking borders standard. Each side of the fabric to have tab guide cable system to maintain even lateral tension and hold surface flat. To have masking fabric on sides to convert the screen to different aspect ratios. Bottom of fabric to be inserted into an aluminum slat bar with added weight to maintain vertical tension on the screen surface. The ends of the slat to be protected by heavy duty plastic caps enclosing a preset adjustable mechanism for screen tensioning. Bottom of each masking fabric shall be formed into a pocket holding a flat steel bar. Case to be of wood and be finished with a black primer coat, ready to accept final finish by others. To be complete with a three position control switch and a two position control switch in a two gang box with cover plate. Screen to be listed by Underwriters' Laboratories.



All viewing surfaces will be seamless.

Audio Vision, High Contrast Audio Vision and High Contrast Cinema Perf available in sizes up to 87" x 155" in HDTV Format and 87" x 161" in Letterbox Format.

All viewing surfaces are standard with black backing except Da-Tex® and Dual Vision.

Detailed dimensional drawings, wiring diagrams and installation instructions available upon request. Specifications subject to change without notice.

## HDTV (1.78:1) TO VIDEO (1.33:1) FORMAT DIMENSIONS

HDTV H x W	HDTV Nominal Diagonal	NTSC Video H x W	Video Nominal Diagonal	Overall Case Length*	Approx. Shipping Wt. Lbs.
45" x 80"	92"	45" x 60"	75"	103 1/4"	117
50" x 89"	102"	50" x 67"	84"	112 3/4"	123
54" x 96"	110"	54" x 72"	90"	120 1/4"	132
60" x 107"	122"	60" x 80"	100"	131 3/4"	145
69" x 123"	141"	69" x 92"	120"	149 3/4"	163
87" x 155"	177"	87" x 116"	150"	184 3/4"	186

## LETTERBOX (1.85:1) TO VIDEO (1.33:1) FORMAT DIMENSIONS

Letterbox H x W	Letterbox Nominal Diagonal	NTSC Video H x W	Video Nominal Diagonal	Overall Case Length*	Approx. Shipping Wt. Lbs.
50" x 92 1/2"	105"	50" x 67"	84"	116 1/4"	117
60" x 111"	126"	60" x 80"	100"	135 3/4"	140
69" x 128"	145"	69" x 92"	120"	154 3/4"	157
87" x 161"	183"	87" x 116"	150"	190 3/4"	180

## CINEMASCOPE (2.35:1) TO HDTV (1.78:1) FORMAT DIMENSIONS

Cinemascope H x W	Cinemascope Nominal Diagonal	HDTV H x W	HDTV Nominal Diagonal	Overall Case Length*	Approx. Shipping Wt. Lbs.
45" x 106"	115"	45" x 80"	92"	129 1/4"	145
49" x 115"	125"	49" x 87"	100"	138 3/4"	155
52" x 122"	133"	52" x 92"	106"	146 1/4"	161
54" x 126"	138"	54" x 96"	110"	150 1/4"	168
58" x 136"	148"	58" x 104"	119"	160 3/4"	175
65" x 153"	166"	65" x 116"	133"	178 3/4"	189

Overall case length dimensions  $\pm 1/4$ ".

\*Add 3" to overall length of case for mounting brackets.

Note: All screen sizes listed are viewing areas. Custom sizes available upon request. All sizes come standard with 12" black drop at top.



## DUAL MASKING ELECTROL®

Concealed without Doors Masking  
Electric Projection Screen

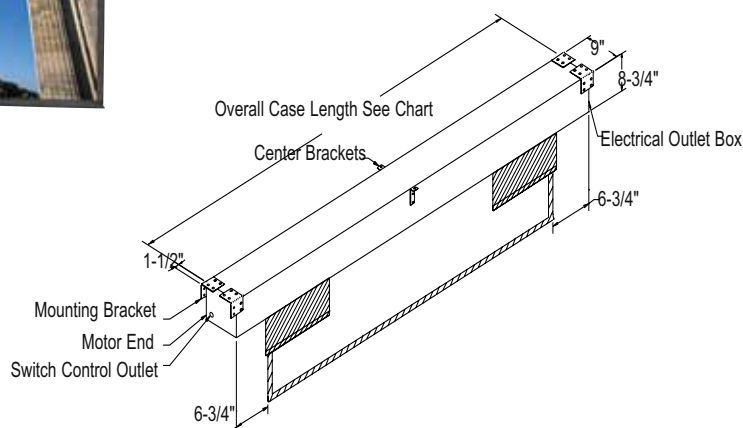
When ordering, make appropriate selections:

1. Select size from charts at the lower right.
2. Select viewing surface:
  - Matte White
  - High Contrast Matte White
  - GREENGUARD® and GREENGUARD® Children and Schools Certified.

3. Options:
  - Extra Drop available to lower picture area more than normal. Specify total drop at top \_\_\_\_\_ (black or white) or at bottom \_\_\_\_\_ (black or white). 13' maximum total surface height including picture area.
  - Dual Motor Low Voltage Control System (DMC).
  - Wireless Remote Control for DMC.
    - Radio Frequency Remote.
    - Radio Frequency Range Extender available
    - Infrared Remote.
  - 220 Volt (50 Hz) Motor.
  - White box (black standard).
  - Silent Motor.



- Dual-motor electric screen.
- View from Letterbox to NTSC format or from HDTV to NTSC format.



## HDTV (1.78:1) TO VIDEO (1.33:1) FORMAT DIMENSIONS

HDTV H x W	HDTV Nominal Diagonal	NTSC Video H x W	Video Nominal Diagonal	Overall Case Length*	Approx. Shipping Wt. Lbs.
45" x 80"	92"	45" x 60"	75"	97½"	100
50" x 89"	102"	50" x 67"	84"	106½"	110
54" x 96"	110"	54" x 72"	90"	113½"	120
60" x 107"	122"	60" x 80"	100"	124½"	132
69" x 123"	141"	69" x 92"	120"	140½"	148
87" x 155"	177"	87" x 116"	150"	172½"	170

## SUGGESTED SPECIFICATIONS:

\_\_\_\_\_ projection screen(s), \_\_\_\_\_ (H) x \_\_\_\_\_ (W), electrically operated 120 volt (60 Hz) not more than 4.8 amp. Shall have two specially designed motors mounted inside two rollers, to be three wire with ground quick reversal type, oiled for life, with automatic thermal overload cutout, integral gears, capacitor and an electric brake to prevent coasting. To have pre-set limit switches to automatically stop picture surfaces in the "up" and "down" positions. The two rollers to be of rigid metal. Screen fabric to be flame retardant and mildew resistant fiberglass with black masking borders standard. To have masking fabric on sides to convert the screen to different aspect ratios. Bottom of fabric shall be formed into a pocket holding a metal rod. The ends of the rod shall be protected by heavy duty plastic caps. Bottom of each masking fabric shall be formed into a pocket holding a flat steel bar. Case to be of wood and to be finished with a black primer coat, ready to accept final finish by others. To be complete with a three position control switch and a two position control switch in a two gang box with cover plate. Screen to be listed by Underwriters' Laboratories.



Matte White and High Contrast Matte White fabrics will be seamless in all sizes.

Detailed dimensional drawings, wiring diagrams and installation instructions available upon request. Specifications subject to change without notice.

## LETTERBOX (1.85:1) TO VIDEO (1.33:1) FORMAT DIMENSIONS

Letterbox H x W	Letterbox Nominal Diagonal	NTSC Video H x W	Video Nominal Diagonal	Overall Case Length*	Approx. Shipping Wt. Lbs.
50" x 92½"	105"	50" x 67"	84"	110"	122
60" x 111"	126"	60" x 80"	100"	128½"	145
69" x 128"	145"	69" x 92"	120"	145½"	162
87" x 161"	183"	87" x 116"	150"	178½"	186

## CINEMASCOPE (2.35:1) TO HDTV (1.78:1) FORMAT DIMENSIONS

Cinemascope H x W	Cinemascope Nominal Diagonal	HDTV H x W	HDTV Nominal Diagonal	Overall Case Length*	Approx. Shipping Wt. Lbs.
45" x 106"	115"	45" x 80"	92"	123½"	130
49" x 115"	125"	49" x 87"	100"	132½"	140
52" x 122"	133"	52" x 92"	106"	139½"	148
54" x 126"	138"	54" x 96"	110"	143½"	155
58" x 136"	148"	58" x 104"	119"	153½"	162
65" x 153"	166"	65" x 116"	133"	170½"	170

Overall case length dimensions ±¼".

\*Add 3" to overall length of case for mounting brackets.

Note: All screen sizes listed are viewing areas. Custom formats and sizes available upon request. All sizes come standard with 12" black drop at top.

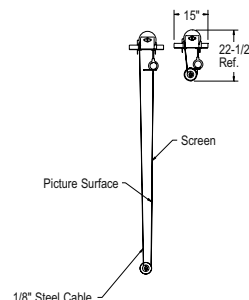


## MOTORIZED SCENIC ROLLER

### Concealed without Doors Masking Electric Projection Screen

When ordering, make appropriate selections:

1. Select size from chart at the lower right.
2. Select viewing surface:
  - Matte White
  - GREENGUARD® and GREENGUARD® Children and Schools Certified.
3. Options:
  - No borders (Black masking borders standard).
  - Extra Drop available to lower picture area more than normal. Specify total drop at top \_\_\_\_\_ (black or white) or at bottom \_\_\_\_\_ (black or white). 30' maximum total surface height including picture area.
  - Radio Frequency Wireless Remote Control.
  - Radio Frequency Range Extender available



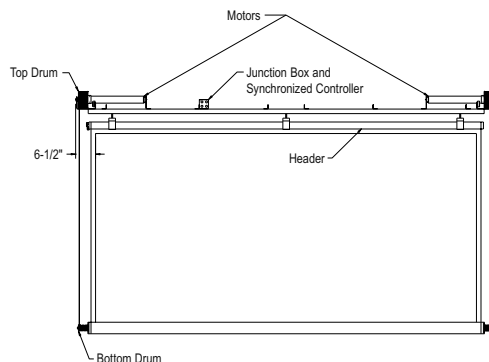
### SUGGESTED SPECIFICATIONS:

\_\_\_\_\_ projection screen(s), \_\_\_\_\_ (H) x \_\_\_\_\_ (W), electrically operated by two motors and 1/8" steel cable to raise and lower screen. Each motor to be 120 volt (60 Hz) not more than 2.4 amp. Motors to be three wire with ground quick reversal type, oiled for life, with automatic thermal overload cutout, integral gears, capacitor and a built-in brake to prevent coasting. Motors to turn drum to allow cable to roll bottom 5" diameter roller "up" and "down" on fabric. Screen to have a straight, rigid tubular metal header, 3" in diameter. Top of fabric shall be formed into a pocket into which header shall be inserted. 3" wide double "C" type clamps of high tensile strength cast aluminum shall be secured to header for hanging. Furnished with a wing nut for adjusting fabric hang. Fabric shall be flame retardant and mildew resistant fiberglass with black masking borders standard on fiberglass fabric. Fabric shall be securely fastened to roller. The header shall be 2" longer than the width of the fabric. Ends of the tubular header shall be protected with cast aluminum end caps. The bottom roller, with the cable drums, will be 12" wider than the width of fabric. Bottom inner drum shall be secured inside the bottom roller. Bottom outer drums shall be adjustable with one bolt and two locking set screws. Bottom roller level can be adjusted by rotating the outer adjustable drums. Screen to be listed by Underwriters' Laboratories.



Matte White: Horizontal seam(s) required when both dimensions exceed 16'.

Detailed dimensional drawings, wiring diagrams and installation instructions available upon request. Specifications subject to change without notice.



### DIMENSIONS

Sizes H x W	Overall Length of Header	Overall Length	Approx. Shipping Wt. Lbs.
10'6" x 14"	170"	182"	680
14' x 14'	170"	182"	689
6' x 16'	194"	206"	725
12' x 16'	194"	206"	741
16' x 16'	194"	206"	751
7' x 18'	218"	230"	791
13'6" x 18'	218"	230"	811
18' x 18'	218"	230"	824
15' x 20'	242"	254"	873
20' x 20'	242"	254"	885
18' x 24'	290"	302"	1011
24' x 24'	290"	302"	1035
21' x 28'	338"	350"	1154
28' x 28'	338"	350"	1187
22'6" x 30'	362"	374"	1222
30' x 30'	362"	374"	1259

Overall length dimensions  $\pm 1/4$ ".

Note: Custom formats and sizes available upon request.



## ARENA ELECTROL®

### Wall or Ceiling Mounted or Ceiling Recessed Electric Projection Screen

When ordering, make appropriate selections:

1. Select size from charts at the lower right.
2. Select viewing surface:
  - Matte White
  - Perforated Matte White
3. Options:
  - Extra Drop available to lower picture area more than normal. Specify total white drop at top \_\_\_\_\_ or at bottom \_\_\_\_\_. 19'-8" maximum total surface height including picture area.



- Internal steel structure supports roller and fabric assembly. The steel structure is clad with painted black steel casing providing a finished appearance.
- Furnished with mounting brackets that may be attached to the top or back of the case.
- Screen is raised by two steel cables wound on the roller. Built-in balancing system ensures the roller remains perfectly horizontal.
- Available in sizes up to 19'-8" high x 39'-4" wide. Screen can be custom made to order in the size desired.
- Includes a radio frequency remote control and a three position wall switch.
- The projection screen surface is centered in the screen housing.
- Available with Matte White and Perforated Matte White fabric, no borders.

### SUGGESTED SPECIFICATIONS:

\_\_\_\_\_ projection screen(s), \_\_\_\_\_ (H) x \_\_\_\_\_ (W), electrically operated by one motor and steel cable to raise and lower screen. Each motor to be 120 volt (60 Hz) not more than 3.8 amp. Motor to be two wire with ground quick reversal type, oiled for life, with automatic thermal overload cutout, integral gears, capacitor and a built in brake to prevent coasting. To have pre-set but adjustable limit switches to automatically stop picture surface in the "up" and "down" positions. Motor to turn drum to allow cable to roll bottom 5<sup>5</sup>/<sub>8</sub>" diameter roller "up" and "down" on fabric. Screen to have a straight, rigid tubular metal header, 1" in diameter. Top of fabric shall be formed into a pocket into which header shall be inserted. 2<sup>3</sup>/<sub>8</sub>" wide pipe coupler shall be secured to header for hanging. Furnished with adjustable threaded rod for adjusting fabric hang. The header shall be 9<sup>1</sup>/<sub>2</sub>" longer than the width of the fabric. Fabric shall be flame retardant and mildew resistant fabric. Fabric shall be securely fastened to roller. The bottom roller, with the cable drums, will be 7<sup>7</sup>/<sub>8</sub>" wider than the width of fabric. Screen to be listed by Underwriters' Laboratories.

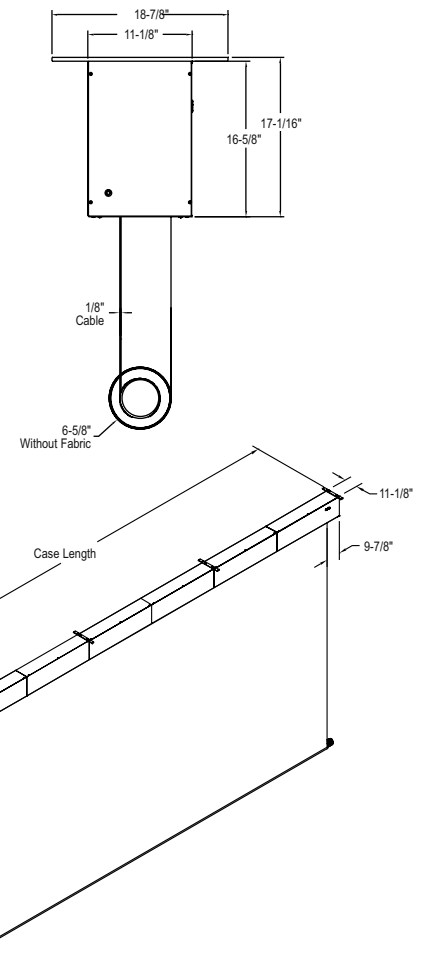


Horizontal seam required when height exceeds 75".

### DO NOT SEAL IN-ALLOW ACCESS

Recessed installation requires access to motor and screen roller.

Specifications subject to change without notice.



### 16:9 HDTV FORMAT DIMENSIONS

Viewing Area H x W	Nominal Diagonal	Overall Case Length	Approx. Shipping Wt. Lbs.
203" x 360"	414"	387 <sup>3</sup> / <sub>4</sub> "	1665
216" x 384"	440"	411 <sup>3</sup> / <sub>4</sub> "	1776
230" x 408"	468"	435 <sup>3</sup> / <sub>4</sub> "	1887

### CINEMASCOPE FORMAT DIMENSIONS

Viewing Area H x W	Nominal Diagonal	Overall Case Length	Approx. Shipping Wt. Lbs.
153" x 360"	391"	387 <sup>3</sup> / <sub>4</sub> "	1665
163" x 384"	416"	411 <sup>3</sup> / <sub>4</sub> "	1776
174" x 408"	443"	435 <sup>3</sup> / <sub>4</sub> "	1887
184" x 432"	470"	459 <sup>3</sup> / <sub>4</sub> "	1998
194" x 456"	496"	483 <sup>3</sup> / <sub>4</sub> "	2109
201" x 472"	513"	499 <sup>3</sup> / <sub>4</sub> "	2220

Overall case length dimensions ±1/4".

Note: Custom formats and sizes available upon request.



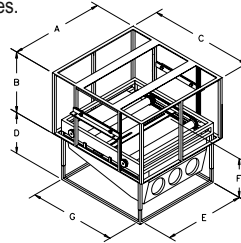
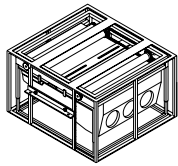
## DA-LIFT

### FEATURES:

- Raise or lower video projectors weighing up to 300 pounds with a push of a button.
- Heavy-duty, all metal construction with rack and pinion, chain drive lift mechanism for quiet operation.
- Bottom of lift is adjustable for flush installation and can be finished to match ceiling.
- Complete with three position control switch with cover plate.
- Optional plenum kit available where needed. Plenum covers meet plenum building codes for Da-Lite's complete line of concealed projector lifts.

### SUGGESTED SPECIFICATIONS:

Video Projector Lift, Model \_\_\_\_\_ Da-Lift 15, 19 or 19L, electrically operated 120 V (60 Hz) not more than 2.2 amp. for projectors weighing up to 300 pounds. Da-Lift 10M and 15M electrically operated 120 V (60 Hz) not more than 1.5 amp. for projectors weighing up to 40 pounds. To have rack and pinion, with chain drive lift mechanism. Shall have specially designed motor, to be three wire with ground, quick reversal type, oiled for life, with automatic thermal overload cutout, integral gears, capacitor and an electric brake to prevent coasting. To have preset but adjustable limit switch to automatically stop lift in the "down" position. When raised, the lift will engage a micro switch that will cut power to the motor. Frame to be black welded steel with two electrical outlets furnished on the platform, for ceiling recessed installation. Bottom of projector lift to be adjustable to allow flush installation with surrounding surface. Removable tray is attached to bottom frame assembly to allow for ceiling tile attachment (by others). To be complete with three position control switch with cover plate. Optional low voltage, radio frequency or infrared, remotes available. Optional plenum kit available where required by code. To be listed by Underwriters' Laboratories.



### DA-LIFT VIDEO PROJECTOR LIFT SPECIFICATIONS

Model	Load Cap. Lbs.	Width "A" In.	Height "B" In.	Depth "C" In.	Travel "D" In.	Inside Dimensions			Unit Weight Lbs.	Approx. Ship. Wt. Lbs.
						Width "E" In.	Height "F" In.	Depth "G" In.		
Da-Lift 10M	40	22 <sup>5</sup> / <sub>8</sub> "	15"	22"	10"	18 <sup>1</sup> / <sub>2</sub> "	10" – 17"	17 <sup>1</sup> / <sub>2</sub> "	87	115
Da-Lift 15M	40	22 <sup>5</sup> / <sub>8</sub> "	20"	22"	15"	18 <sup>1</sup> / <sub>2</sub> "	15" – 22"	17 <sup>1</sup> / <sub>2</sub> "	87	115
Da-Lift 15	300	30 <sup>3</sup> / <sub>4</sub> "	20"	34"	15"	26 <sup>1</sup> / <sub>2</sub> "	15" – 22"	28 <sup>1</sup> / <sub>2</sub> "	122	172
Da-Lift 19	300	32 <sup>3</sup> / <sub>4</sub> "	24"	38"	19"	28 <sup>1</sup> / <sub>2</sub> "	19" – 30"	32 <sup>1</sup> / <sub>2</sub> "	132	182
Da-Lift 19L	300	42 <sup>3</sup> / <sub>4</sub> "	24"	48"	19"	38 <sup>1</sup> / <sub>2</sub> "	19" – 30"	42 <sup>1</sup> / <sub>2</sub> "	177	215

## DA-LIFT PIVOT

### FEATURES:

- Includes universal projector mount.
- Front to back, left to right, vertical, and tilt projector adjustments.
- Signal cable and power cord management options.
- Electrical knockouts provided.
- Internally mounted wall switch for installer operation.
- Includes two outlet boxes, prewired duplex female receptacle, and duplex plate.
- All internal wiring is complete.
- Designed to mount in suspended ceiling or drywall ceiling.
- Infrared or radio frequency remote operation available.
- Unit has white powder coat finish.

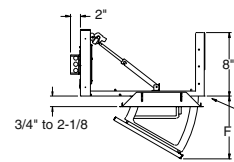
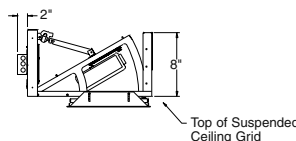
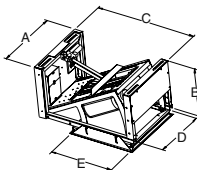
### SUGGESTED SPECIFICATIONS:

Da-Lite/Advance Video Projector lift model Da-Lift \_\_\_\_\_ 26PL/33PL shall be mounted where indicated on plans. The lift shall operate on 120V AC power and not draw more than 5.0 amps. The mount shall be a fabricated mild steel design and consist of a 14-gauge welded support frame, 14-gauge welded tilting frame, 18-gauge ceiling tile holder and 18-gauge ceiling tile trim piece. Product shall have a prewired 120V AC grounded duplex receptacle and a prewired built-in switch for installer operation. Product shall have a commercial powder coat white finish.



### DA-LIFT PIVOT VIDEO PROJECTOR LIFT SPECIFICATIONS

Model	Load Cap.	Dim. A	Dim. B	Dim. C	Dim. D	Dim. E	Dim. F
Da-Lift 26PL	25 lbs.	17.00"	13.63"	25.38"	16.00"	14.00"	12.75"
Da-Lift 33PL	25 lbs.	21.50"	16.63"	32.38"	20.50"	18.50"	16.25"





## SERIAL CONTROL BOARD SCB-200



The SCB-200 screen controller provides control over a screen using RS-232C communications or an optional Ethernet controller, wall controller or infrared controller. Designed for applications where precise screen control and monitoring capabilities are crucial, the SCB-200 is available as a factory-installed option in the Contour, Tensioned Contour, Advantage, Tensioned Advantage, Advantage Deluxe, and Tensioned Advantage Deluxe.

For multi-aspect ratio screens and other more sophisticated applications, multiple SCB-200 screen controllers may be daisy-chained for synchronous operation, while still using a single RS-232 connection or optional controller.

The SCB-200 possesses advanced position detection capabilities, or DSPS (Da-Lite Screen Positioning System), allowing for precise screen positioning. Like a traditional electric screen controller, the SCB-200 allows the screen to be positioned in the fully up or down position, but also allows for dynamic positioning. As an example, the SCB-200 allows the screen to "go to 100 inches", "raise by 4 inches", or "go to 5x4 aspect ratio".

The SCB-200 also possesses advanced monitoring capabilities. The precise screen position is stored in non-volatile memory, so that even in the event of power failure, proper calibration is restored. Other monitoring functions include runtime AC current detection, which allows for monitoring of the screen motor.

#### Specifications:

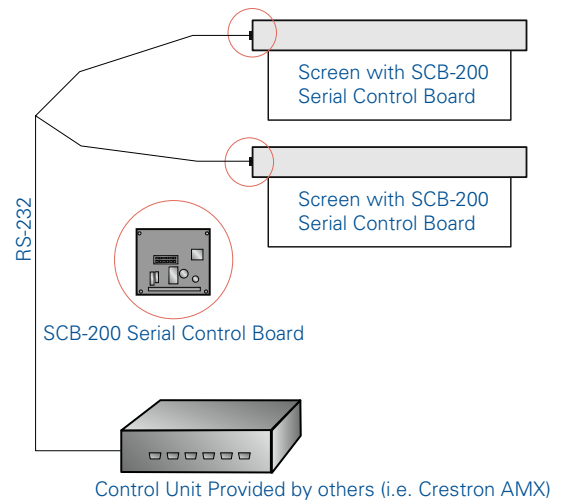
##### I/O Ports:

2x RS-232C ports  
 5v IR Interface (normally used with the IR-200 infrared sensor)  
 12v IR Interface (normally used with the WC-200 wall controller or aftermarket IR sensor)  
 RS-485 bus (Used to daisy chain multiple SCB-200 screen controllers)

Termination type: Captive Screw Terminals  
 Power Requirements: 100-240 VAC, 50 or 60 Hz  
 Fused protection: 10A

##### Optional Accessories:

NET-200 Ethernet Controller  
 WC-200 Wall Controller  
 IR-200 Infrared Remote Control  
 RM-200 Infrared Transmitter





## NET-200 ETHERNET CONTROLLER

The NET-200 Ethernet Controller is a snap-on daughterboard to the SCB-200 that allows a direct Ethernet connection to an SCB-200 controlled screen. This device extends the control capabilities of the SCB-200 to almost any network enabled computer or control system in a LAN or WAN environment using standard TCP/IP protocol and an available 10Base-T or 100Base-TX Ethernet connection.

The Ethernet Controller serves two primary purposes; the ability to control and monitor the SCB-200 controlled screen from any Java-enabled web browser, such as Microsoft® Internet Explorer, and the ability to use serial communication with the SCB-200 over the Ethernet interface.

The embedded web server allows for control and monitoring of up to 8 daisy-chained SCB-200 Screen Controllers, allowing for web-enabled control of even the most sophisticated screen installations.

Specifications:

I/O Port: RJ-45 Ethernet Connection

IP Addressing: Static, DHCP or BOOTP

Supported Protocols: TCP/IP, UDP/IP, ARP, ICMP, SNMP, TFTP, Telnet, DHCP, BOOTP, HTTP, and AutoIP

Supported Products: SCB-200 Screen Controller



## WC-200 WALL CONTROLLER

Powered from the SCB-200, the WC-200 is a Decora style wall controller designed for simple installation and sophisticated control. Functions such as screen up, down and stop are available, as well as more advanced functionality such as preset and custom aspect ratios with status LEDs. The WC-200 also possesses an IR receiver for use with the RM-200 infrared remote control eliminating the need for a separate IR receiver.

Specifications:

I/O Ports: RS-232C—used to communicate with the SCB-200, 12V IR (used for IR receiver functionality)

Termination Type: Captive Screw Terminals

Supported Products:

SCB-200 Screen Controller



## IR-200 INFRARED REMOTE CONTROL

The IR-200 includes the RM-200 14-button infrared transmitter and an infrared receiver for wireless control over SCB-200 equipped screens. Basic functions, such as screen up, down and stop are available, as are more sophisticated functions such as preset and custom aspect ratios.

Optional Accessories:

WC-200 Wall Controller





## REMOTE CONTROL OPTIONS



**Single Motor  
Low Voltage  
Control System**

- Controls all Da-Lite single motor electric screens.
- Includes control module and three-button wall switch and cover plate.
- Can be used alone with three-button wall switch.
- Required for wireless radio frequency or infrared remotes.



**Dual Motor Low  
Voltage Control  
System**

- Controls all Da-Lite Dual Masking Screens or Da-Lift and single motor screen combination.
- Includes control module and three-button wall switch and cover plate.
- Can be used alone with three-button wall switch.



**Single Motor Low Voltage  
Control System with a  
Three-Button Wireless  
Infrared Remote Receiver  
and Transmitter**

- Controls all Da-Lite single motor electric screens.
- Includes control module and three-button wall switch and cover plate.
- Can be used alone with three-button wall switch.
- Three-button control infrared transmitter with receiver.
- Two AAA batteries included.
- Single-touch control operates up to 50'.



**Dual Motor Low Voltage  
Control System with a  
Three-Button Wireless  
Infrared Remote Receiver  
and Transmitter**

- Controls Da-Lite Dual Masking Screens or Da-Lift and single motor screen combination.
- Includes control module and three-button wall switch and cover plate.
- Can be used alone with three-button wall switch.
- Three-button control infrared transmitter with receiver.
- Two AAA batteries included.
- Single-touch control operates up to 50'.



**Single Motor Low Voltage  
Control System with a  
Three-Button Wireless  
Radio Frequency Remote  
Receiver and Transmitter**

- Controls all Da-Lite single motor electric screens.
- Includes control module and three-button wall switch and cover plate.
- Can be used alone with three-button wall switch.
- Three-button control radio frequency transmitter with receiver.
- Battery included.
- Single-touch control operates up to 75'.



**Dual Motor Low Voltage  
Control System with a  
Three-Button Wireless  
Radio Frequency Remote  
Receiver and Transmitter**

- Controls all Da-Lite Dual Masking Screens or Da-Lift and single motor screen combination.
- Includes control module and three-button wall switch and cover plate.
- Can be used alone with three-button wall switch.
- Three-button control radio frequency transmitter with receiver.
- Battery included.
- Single-touch control operates up to 75'.



## ELECTRIC SCREEN ACCESSORIES



**Key-Locking  
Switch Cover  
Plate**

- Hinged, goes over cover plate.
- Opens with a key to allow access to 115 Volt switch or L.V.C. three-button wall switch.
- Brushed stainless steel finish.



**Wireless Remote  
for Horizon**

- Radio Frequency
- Infrared



**Key-Operated,  
115 Volt Switch**

- Flush-mounted wall control switch is key-activated for security.
- Use with 115 Volt systems only.
- White cover plate.



**Replacement Wall  
Switch 110 Volt with  
Decora® Cover Plate**

- Available Colors
- White (standard)
  - Ivory
  - Stainless Steel



**Video  
Projector  
Interface**

- DC controls allowing screen to be raised or lowered automatically when projector is ON or OFF.
- Includes complete box with three position switch for manual operation and cover plate.



**Floating Mounting  
Bracket**

- For Cosmopolitan® Electrol® and Tensioned Cosmopolitan® Electrol® screens up to 9'x12'.



**Ceiling Trim Kit**

- For Cosmopolitan® Electrol®, Tensioned Cosmopolitan® Electrol®, and Model C screens up to 9'x12'.
- Supplied hardware allows for suspending from multiple ceiling configurations.



## CINEMA CONTOUR®

Wall-Mounted  
Projection Screen

When ordering, make appropriate selections:

- Select size from charts at the lower right.
- Select viewing surface:
  - Da-Mat®
  - High Contrast Da-Mat®
  - Cinema Vision®
  - High Contrast Cinema Vision®
  - Pearlescent®
  - High Power®
  - Da-Tex® (Rear)
  - Dual Vision®
  - Audio Vision®
  - High Contrast Audio Vision®
  - High Contrast Cinema Perf®
  - GREENGUARD® and GREENGUARD® Children and Schools Certified.

- Options:
  - Black Textured Powder Coat Finish (Pro-Trim® standard).
  - Veneer Frame Finish (Choose from seven standard veneers).
    - Light Oak
    - Medium Oak
    - Natural Walnut
    - Heritage Walnut
    - Mahogany
    - Cherry
    - Honey Maple
  - T-Legs (must be ordered at the same time as screen).
  - Velcro® Attachment (snaps standard).



- Permanent wall-mounted screen.
- Available in front and rear projection.
- 3" wide x 1½" deep aluminum tube frame with tapered front edge.

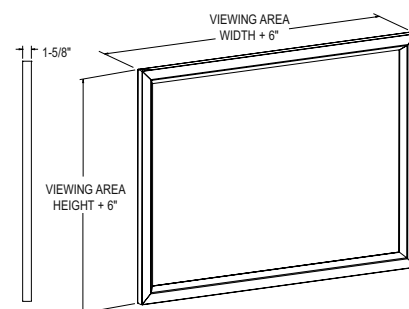
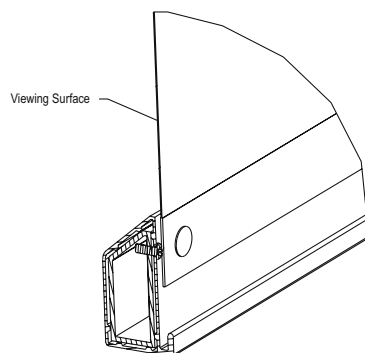
## SUGGESTED SPECIFICATIONS:

\_\_\_\_\_ projection screen(s), \_\_\_\_\_ (H) x \_\_\_\_\_ (W).

To have flexible screen surface, fire retardant and mildew resistant. Screen surface standard with reinforced black binding on all four sides and will attach to frame with metal snaps. Frame will conceal snaps and binding. Screen frame will be 3" wide x 1½" deep with a tapered front edge to reduce shadows on the viewing surface. Frame to be made of aluminum and finished with black Pro-Trim® fabric covering to enhance appearance and absorb light surrounding the viewing area. Frame will be slip-jointed at corners and joints. Standard wall-mounting brackets will be included.

All Da-Mat®, High Contrast Da-Mat®, Cinema Vision, High Contrast Cinema Vision, Pearlescent, Da-Tex®, and Dual Vision surfaces are seamless up to 16' high. Audio Vision, High Contrast Cinema Perf and High Contrast Audio Vision surfaces are available in sizes up to 8' high. High Power® surface is available in sizes up to 6' high. All viewing surfaces are standard with black backing except Da-Tex® and Dual Vision.

Detailed dimensional drawings and installation instructions available upon request. Specifications subject to change without notice.



## 4:3 VIDEO FORMAT DIMENSIONS

Viewing Area H x W	Nominal Diagonal Size	Overall Dimensions H x W	Approx. Shipping Wt. Lbs.
36" x 48"	60"	42" x 54"	24
43" x 57½"	72"	49" x 63½"	28
50½" x 67"	84"	56½" x 73"	31
57½" x 77"	96"	63½" x 83"	35
60" x 80"	100"	66" x 86"	37
72" x 96"	120"	78" x 102"	45
90" x 120"	150"	96" x 126"	59
108" x 144"	180"	114" x 150"	74
120" x 160"	200"	126" x 166"	89
144" x 192"	240"	150" x 198"	105

## 16:9 HDTV FORMAT DIMENSIONS

Viewing Area H x W	Nominal Diagonal Size	Overall Dimensions H x W	Approx. Shipping Wt. Lbs.
37½" x 67"	77"	43½" x 73"	29
40½" x 72"	82"	46½" x 78"	30
45" x 80"	92"	51" x 86"	34
49" x 87"	100"	55" x 93"	36
52" x 92"	106"	58" x 98"	40
54" x 96"	110"	60" x 102"	41
58" x 104"	119"	64" x 110"	44
65" x 116"	133"	71" x 122"	49
78" x 139"	159"	84" x 145"	56
94½" x 168"	193"	100½" x 174"	81
108" x 192"	220"	114" x 198"	96

## 16:10 WIDE FORMAT DIMENSIONS

Viewing Area H x W	Nominal Diagonal Size	Overall Dimensions H x W	Approx. Shipping Wt. Lbs.
50" x 80"	94"	56" x 86"	34
60" x 96"	113"	66" x 102"	41
69" x 110"	130"	75" x 116"	47
87" x 139"	164"	93" x 145"	56

## CINEMASCOPE FORMAT DIMENSIONS

Viewing Area H x W	Nominal Diagonal Size	Overall Dimensions H x W	Approx. Shipping Wt. Lbs.
37½" x 88"	96"	43½" x 94"	36
40½" x 95"	103"	46½" x 101"	41
45" x 106"	115"	51" x 112"	44
49" x 115"	125"	55" x 121"	49
52" x 122"	133"	58" x 128"	51
54" x 126"	138"	60" x 132"	53
58" x 136½"	148"	64" x 142½"	55
65" x 153"	166"	71" x 159"	62
78" x 183½"	199"	84" x 189½"	91
81½" x 192"	208"	87½" x 198"	96

Overall frame dimensions ±¼".

Note: Custom formats and sizes available upon request.



## DA-SNAP

Wall-Mounted  
Projection Screen

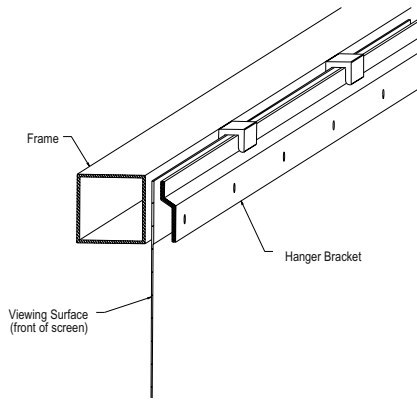
When ordering, make appropriate selections:

- Select size from charts at the lower right.
- Select viewing surface:
  - Da-Mat®
  - High Contrast Da-Mat®
  - Cinema Vision®
  - High Contrast Cinema Vision®
  - Pearlescent®
  - High Power®
  - Audio Vision®
  - High Contrast Audio Vision®
  - High Contrast Cinema Perf®
  - Da-Tex® (Rear)
  - Dual Vision®
  - GREENGUARD® and GREENGUARD® Children and Schools Certified.

- Options:
  - T-Legs (must be ordered at the same time as screen).
  - Velcro® Attachment (snaps standard).
  - Pro-Trim®: Pro-Trim® is a fabric covering that aesthetically enhances the appearance of the installation. Pro-Trim® provides a stylish masked border while absorbing the light that surrounds the viewing area.
  - Wrap-Around fabric.
  - Pro Imager Masking System (Refer to the Pro Imager specification data sheet for size availability and more details).



- High quality fixed frame screen.
- Front or rear projection.
- 1½" square aluminum tube frame.



## SUGGESTED SPECIFICATIONS:

\_\_\_\_\_ projection screen(s), \_\_\_\_\_ (H) x \_\_\_\_\_ (W).  
To have flexible screen surface, fire retardant and mildew resistant. Screen surface standard with reinforced black binding on all four sides and will attach to frame with metal snaps. Frame will conceal snaps and binding. Screen frame will be 1½" square matte black powder coated aluminum. Walls will be ribbed for strength and light weight. Frame will be slip-jointed at corners and joints. Standard wall-mounting brackets will be included.

All Da-Mat®, High Contrast Da-Mat®, Cinema Vision®, High Contrast Cinema Vision®, Pearlescent®, Da-Tex® and Dual Vision surfaces are seamless up to 16' high.

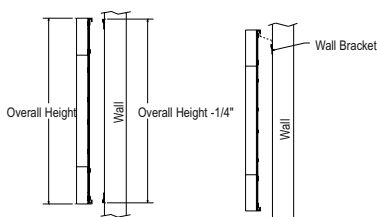
Audio Vision®, High Contrast Audio Vision® and High Contrast Cinema Perf surfaces are available in sizes up to 8' high.

High Power® surface is available in sizes up to 6' high.

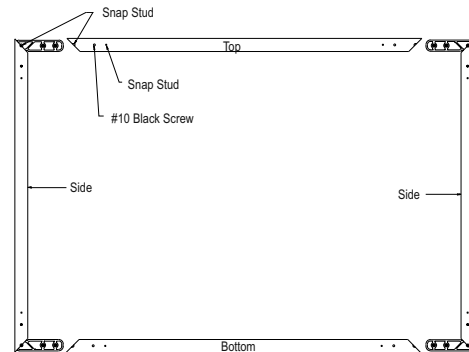
All viewing surfaces are standard with black backing except Da-Tex® and Dual Vision.

Detailed dimensional drawings and installation instructions available upon request. Specifications subject to change without notice.

## Da-Snap Wall Mount



## Da-Snap Shown From Back Side



## 4:3 VIDEO FORMAT DIMENSIONS

Viewing Area H x W	Nominal Diagonal Size	Overall Dimensions H x W	Approx. Shipping Wt. Lbs.
36" x 48"	60"	39" x 51"	20
43" x 57½"	72"	46" x 60½"	23
50½" x 67"	84"	53½" x 70"	26
57½" x 77"	96"	60½" x 80"	28
60" x 80"	100"	63" x 83"	31
72" x 96"	120"	75" x 99"	38
90" x 120"	150"	93" x 123"	48
108" x 144"	180"	111" x 147"	63
120" x 160"	200"	123" x 163"	75
144" x 192"	240"	147" x 195"	90

## 16:9 HDTV FORMAT DIMENSIONS

Viewing Area H x W	Nominal Diagonal Size	Overall Dimensions H x W	Approx. Shipping Wt. Lbs.
37½" x 67"	77"	40½" x 70"	24
40½" x 72"	82"	43½" x 75"	26
45" x 80"	92"	48" x 83"	28
49" x 87"	100"	52" x 90"	30
52" x 92"	106"	55" x 95"	32
54" x 96"	110"	57" x 99"	33
58" x 104"	119"	61" x 107"	36
65" x 116"	133"	68" x 119"	37
78" x 139"	159"	81" x 142"	50
94½" x 168"	193"	97½" x 171"	75
108" x 192"	220"	111" x 195"	90

## 16:10 WIDE FORMAT DIMENSIONS

Viewing Area H x W	Nominal Diagonal Size	Overall Dimensions H x W	Approx. Shipping Wt. Lbs.
50" x 80"	94"	53" x 83"	28
60" x 96"	113"	63" x 99"	33
69" x 110"	130"	72" x 113"	37
87" x 139"	164"	90" x 142"	50

## CINEMASCOPE FORMAT DIMENSIONS

Viewing Area H x W	Nominal Diagonal Size	Overall Dimensions H x W	Approx. Shipping Wt. Lbs.
37½" x 88"	96"	40½" x 91"	30
40½" x 95"	103"	43½" x 98"	33
45" x 106"	115"	48" x 109"	36
49" x 115"	125"	52" x 118"	37
52" x 122"	133"	55" x 125"	42
54" x 126"	138"	57" x 129"	47
58" x 136½"	148"	61" x 139½"	49
65" x 153"	166"	68" x 156"	56
78" x 183½"	199"	81" x 186½"	85
81½" x 192"	208"	84½" x 195"	90

Overall frame dimensions ±¼".

Note: Custom formats and sizes available upon request.



## IMAGER

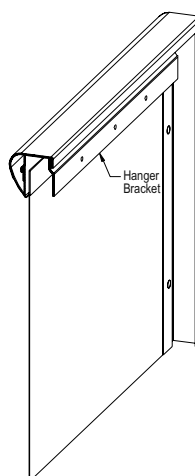
### Wall-Mounted Projection Screen

When ordering, make appropriate selections:

- Select size from charts at the lower right.
- Select viewing surface:
  - Da-Mat®
  - High Contrast Da-Mat®
  - Cinema Vision®
  - High Contrast Cinema Vision®
  - Pearlescent®
  - Audio Vision®
  - High Contrast Audio Vision®
  - High Contrast Cinema Perf®
  - Da-Tex® (Rear)
  - Dual Vision®
  - GREENGUARD® and GREENGUARD® Children and Schools Certified.



- Permanent wall-mounted screen.
- Aluminum frame.



- Options:
  - Pro-Trim®: Pro-Trim® is a fabric covering that aesthetically enhances the appearance of the installation. Pro-Trim® provides a stylish masked border while absorbing the light that surrounds the viewing area.
  - Veneer Frame Finish (Choose from seven standard veneers).
    - Light Oak
    - Medium Oak
    - Natural Walnut
    - Heritage Walnut
    - Mahogany
    - Cherry
    - Honey Maple
  - Velcro® Attachment (snaps standard).
  - Pro Imager Masking System (Refer to the Pro Imager specification data sheet for size availability and more details).

### SUGGESTED SPECIFICATIONS:

\_\_\_\_\_ projection screen(s), \_\_\_\_\_ (H) x \_\_\_\_\_ (W).

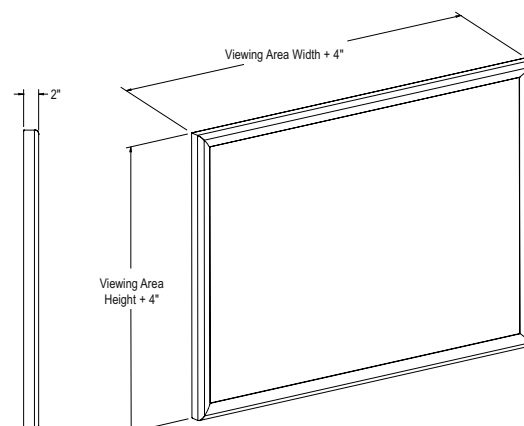
To have flexible screen surface, fire retardant and mildew resistant. Screen surface will attach to frame with snaps. Frame will conceal all binding and attachment materials. Screen frame will be textured matte black powder coated aluminum. Frame will be miter cut (45°) at corners. Wall mounting bracket will be included.

All Da-Mat®, High Contrast Da-Mat®, Cinema Vision, High Contrast Cinema Vision, Pearlescent, Da-Tex® and Dual Vision surfaces are seamless up to 16' high.

Audio Vision, High Contrast Audio Vision and High Contrast Cinema Perf surfaces are available in sizes up to 8' high.

All viewing surfaces are standard with black backing except Da-Tex® and Dual Vision.

Detailed dimensional drawings and installation instructions available upon request. Specifications subject to change without notice.



### 4:3 VIDEO FORMAT DIMENSIONS

Viewing Area H x W	Nominal Diagonal Size	Overall Dimensions H x W	Approx. Shipping Wt. Lbs.
36" x 48"	60"	40" x 52"	20
43" x 57½"	72"	47" x 61½"	24
50½" x 67"	84"	54½" x 71"	27
57½" x 77"	96"	61½" x 81"	30
60" x 80"	100"	64" x 84"	32
72" x 96"	120"	76" x 100"	37
90" x 120"	150"	94" x 124"	50

### 16:9 HDTV FORMAT DIMENSIONS

Viewing Area H x W	Nominal Diagonal Size	Overall Dimensions H x W	Approx. Shipping Wt. Lbs.
37½" x 67"	77"	41½" x 71"	24
40½" x 72"	82"	44½" x 76"	27
45" x 80"	92"	49" x 84"	28
49" x 87"	100"	53" x 91"	32
52" x 92"	106"	56" x 96"	33
54" x 96"	110"	58" x 100"	34
58" x 104"	119"	62" x 108"	38
65" x 116"	133"	69" x 120"	44
78" x 139"	159"	81" x 143"	46

### CINEMASCOPE FORMAT DIMENSIONS

Viewing Area H x W	Nominal Diagonal Size	Overall Dimensions H x W	Approx. Shipping Wt. Lbs.
37½" x 88"	96"	41½" x 92"	32
40½" x 95"	103"	44½" x 99"	34
45" x 106"	115"	49" x 110"	38
49" x 115"	125"	53" x 119"	43
52" x 122"	133"	56" x 126"	45
54" x 126"	138"	58" x 130"	46
58" x 136½"	148"	62" x 140½"	48

Overall frame dimensions ±¼".

Note: Custom formats and sizes available upon request.



## MULTI-MASK IMAGER

### Fixed Frame Screen with Masking System

When ordering, make appropriate selections:

- Select size from charts at the lower right.
- Select viewing surface:
  - Da-Mat
  - High Contrast Da-Mat
  - Cinema Vision
  - High Contrast Cinema Vision
  - Pearlescent
  - Audio Vision
  - High Contrast Audio Vision
  - High Contrast Cinema Perf
  - Da-Tex (Rear)
  - Dual Vision
  - High Power

GREENGUARD and GREENGUARD Children and Schools Certified.

- Options:
  - Multi-Channel Infrared Remote (MCIR).
  - Single motor Low Voltage Control (LVC) - 3 required.
  - Radio Frequency Wireless Remote Control for LVC System.
  - Radio Frequency Range Extender available.
  - Locking Switch Cover Plate for 120 V or LVC Switch.
  - Key Operated Switch for 120V only (NOTE: Cannot be used with LVC).
  - 220 Volt (50 Hz) motor.



- Fixed frame screen that features both horizontal and vertical masking.
- Video, HDTV, Letterbox and Cinemascope formats can be achieved by motorized masking.

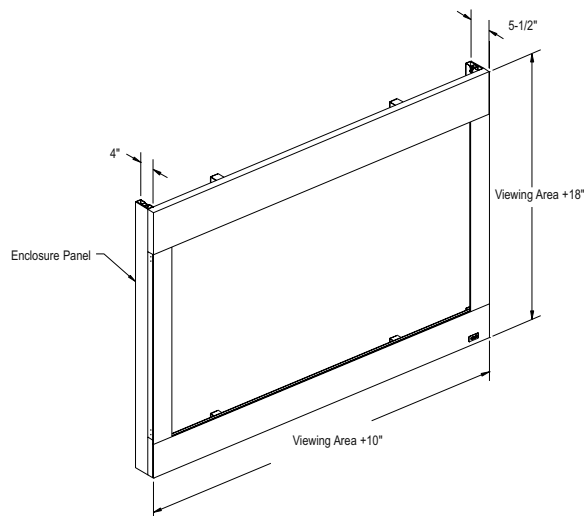
### SUGGESTED SPECIFICATIONS:

\_\_\_\_\_ projection screen(s),  
 \_\_\_\_\_ (H) x \_\_\_\_\_ (W),  
 with electric masking systems, motorized. Shall have specially designed motor mounted inside the roller, to be three wire with ground, quick reversal type, oiled for life, with automatic thermal overload cutout, integral gears, capacitor and an electric brake to prevent coasting. Operates on 120V AC, 3.6 amp, 3 motors, each not more than 1.2 amp. Motorized roller to be extruded aluminum. Masks are electronically controlled panels that extend and retract from the framing at the top and bottom of the screen. Masking fabric to be flame retardant and mildew resistant fiberglass. System shall mask screen equally from each side, closing to a predetermined alternate format. Vertical strips of masking fabric mounted to aluminum roller. Bars attached to the bottoms of the strips. Bar and masking fabric to lower from top on operation, and bar to be concealed by bottom panel when lowered. System shall also mask screen from both top and bottom to a predetermined alternate format. Masking fabric mounted to aluminum slat bar, finished matte black, and operated by aluminum roller with drive unit inside. To have flexible screen surface, fire retardant and mildew resistant. Frame to be made of extruded aluminum, covered with black Pro-Trim fabric to enhance appearance and absorb light surrounding the viewing surface. Listed by Underwriter's Laboratories.



All surfaces will be seamless in standard sizes.  
 All viewing surfaces are standard with black backing except Da-Tex and Dual Vision.

Detailed dimensional drawings and installation instructions available upon request.  
 Specifications subject to change without notice.



### HDTV (16:9)



### Letterbox (1.85:1)



### NTSC Video (4:3)



### Cinemascope (2.35:1)



### VERTICAL MASKING DIMENSIONS

Overall Dimensions	HDTV (1.78) Viewing Area H x W	HDTV Nominal Diagonal	NTSC (1.33) Viewing Area H x W	NTSC Nominal Diagonal	Approx. Shipping Wt. Lbs.
63" x 90"	45" x 80"	92"	45" x 60"	75"	200
67" x 97"	49" x 87"	100"	49" x 65"	82"	220
70" x 102"	52" x 92"	106"	52" x 69"	86"	230
72" x 106"	54" x 96"	110"	54" x 72"	90"	240
76" x 114"	58" x 104"	119"	58" x 77"	96"	260
83" x 126"	65" x 116"	133"	65" x 86"	108"	290

### HORIZONTAL MASKING DIMENSIONS

Overall Dimensions	Letterbox (1.85) Viewing Area H x W	Letterbox Nominal Diagonal	Cinemascope (2.35) Viewing Area H x W	Cinemascope Nominal Diagonal	Approx. Shipping Wt. Lbs.
63" x 90"	43" x 80"	91"	34" x 80"	87"	200
67" x 97"	47" x 87"	99"	37" x 87"	95"	220
70" x 102"	50" x 92"	105"	39" x 92"	100"	230
72" x 106"	52" x 96"	109"	41" x 96"	104"	240
76" x 114"	56" x 104"	118"	44" x 104"	113"	260
83" x 126"	63" x 116"	132"	49" x 116"	126"	290

Overall frame dimensions  $\pm 1/4$ ".

Note: Custom formats and sizes available upon request.



## PRO IMAGER MASKING SYSTEM

## Motorized Screen Masking System

When ordering, make appropriate selections:

1. Select size from charts below.
2. Select masking format:
  - Vertical
  - Horizontal
3. Options:
  - Single motor low voltage control, 3 button with one (1) Switch - external.
  - Radio Frequency Wireless Remote Control for LVC System.
  - Radio Frequency Range Extender available.
  - Infrared Wireless Remote Control Unit for LVC System.
  - Locking Switch Cover Plate for 120 V or 3-Button Switch.
  - Key Operated Switch for 120 V only (NOTE: Cannot be used with low voltage system).
  - 220 Volt (50 Hz) motor.
  - Video Projector Interface Control - external.
  - Pro-Trim\*: Pro-Trim\* is a fabric covering that aesthetically enhances the appearance of the installation. Pro-Trim\* provides a stylish masked border while absorbing the light that surrounds the viewing area.
  - External SCB-100 - RS-232 Serial Control Board
  - NET-100 Ethernet-Serial Adapter



- Motorized System for masking HDTV format to NTSC format or NTSC format to HDTV or Letterbox format.
- Fits Imager, Da-Snap® or Perm-Wall screens. (screen sold separately)

## SUGGESTED SPECIFICATIONS: VERTICAL AND HORIZONTAL

\_\_\_\_\_ masking system(s), \_\_\_\_\_ (H) x \_\_\_\_\_ (W), electrically operated 120V (60 Hz) not more than 1.2 amp, for use with a fixed wall projection screen. Shall have specially designed motor mounted inside the roller, to be three wire with ground, quick reversal type, oiled for life, with automatic thermal overload cutout, integral gears, capacitor and an electric brake to prevent coasting. Motorized roller to be extruded aluminum. Channels and roller boxes to be aluminum custom extruded shapes finished matte black powder coat. Masking fabric to be flame retardant and mildew resistant fiberglass. For use with Perm Wall, Da-Snap and Imager fixed wall projection screens.

## Horizontal Masking:

System shall mask screen equally from each side, closing to a predetermined alternate format. Vertical strips of masking fabric mounted to horizontal aluminum slot bar powder coated black. Bar and masking fabric to lower from top on operation, and bar to be concealed by bottom channel when lowered.

## Vertical Masking:

System shall mask screen equally from top to bottom, closing symmetrically to a predetermined alternate format. Motorized roller shall oppose a spring roller institutional quality, with heavy-duty spring, in one-piece steel roller. Masking fabric mounted to aluminum slot bar, finished matte black, and operated by two take-up straps of black woven polypropylene, minimum break strength 200 lbs., completely concealed by side channels at all times. Listed by Underwriter's Laboratories.

Detailed dimensional drawings, wiring diagrams and installation instructions available upon request.  
Specifications subject to change without notice.



Frame depth is 3 3/4". Frame height = viewing area plus 12". Frame width = viewing area plus 9".

## VERTICAL FORMAT DIMENSIONS

NTSC (1.33) Viewing Area H x W	HDTV (1.78) Viewing Area H x W	Overall Dimensions	Nominal Diagonal Size Open	Nominal Diagonal Size Closed	Approx. Shipping Wt. Lbs.
36" x 48"	27" x 48"	48" x 57"	60"	55"	38
43" x 57 1/2"	32" x 57 1/2"	55" x 66 1/2"	72"	66"	44
50 1/2" x 67"	37" x 67"	62 1/2" x 76"	84"	77"	50
57 1/2" x 77"	43" x 77"	69 1/2" x 86"	96"	89"	56
60" x 80"	45" x 80"	72" x 89"	100"	92"	58
72" x 96"	54" x 96"	84" x 105"	120"	110"	68
90" x 120"	67 1/2" x 120"	102" x 129"	150"	138"	85

## HORIZONTAL FORMAT DIMENSIONS

HDTV (1.78) Viewing Area H x W	NTSC (1.33) Viewing Area H x W	Overall Dimensions	Nominal Diagonal Size Open	Nominal Diagonal Size Closed	Approx. Shipping Wt. Lbs.
45" x 80"	45" x 60"	57" x 89"	92"	75"	58
49" x 87"	49" x 65"	61" x 96"	100"	82"	63
52" x 92"	52" x 69"	64" x 101"	106"	86"	66
54" x 96"	54" x 72"	66" x 105"	110"	90"	69
58" x 104"	58" x 77"	70" x 113"	119"	96"	74
65" x 116"	65" x 86"	77" x 125"	133"	108"	81
78" x 139"	78" x 104"	90" x 148"	159"	130"	95

## VERTICAL FORMAT DIMENSIONS

NTSC (1.33) Viewing Area H x W	Letterbox (1.85) Viewing Area H x W	Overall Dimensions	Nominal Diagonal Size Open	Nominal Diagonal Size Closed	Approx. Shipping Wt. Lbs.
36" x 48"	26" x 48"	48" x 57"	60"	55"	38
43" x 57 1/2"	31" x 57 1/2"	55" x 66 1/2"	72"	65"	44
50 1/2" x 67"	36" x 67"	62 1/2" x 76"	84"	76"	50
57 1/2" x 77"	41" x 77"	69 1/2" x 86"	96"	87"	56
60" x 80"	43" x 80"	72" x 89"	100"	91"	58
72" x 96"	51" x 96"	84" x 105"	120"	109"	68
90" x 120"	65" x 120"	102" x 129"	150"	136"	85

## HORIZONTAL FORMAT DIMENSIONS

Cinemascope (2.35) Viewing Area H x W	HDTV (1.78) Viewing Area H x W	Overall Dimensions	Nominal Diagonal Size Open	Nominal Diagonal Size Closed	Approx. Shipping Wt. Lbs.
37 1/2" x 88"	37 1/2" x 67"	49 1/2" x 97"	96"	77"	65
45 1/2" x 95"	40 1/2" x 72"	52 1/2" x 104"	103"	82"	70
45" x 106"	45" x 80"	57" x 115"	115"	92"	75
49" x 115"	49" x 87"	61" x 124"	125"	100"	81
52" x 122"	52" x 92"	64" x 131"	133"	106"	85
54" x 126"	54" x 96"	66" x 135"	138"	110"	88

Overall dimensions  $\pm 1/4$ ".

Custom formats and sizes available upon request.

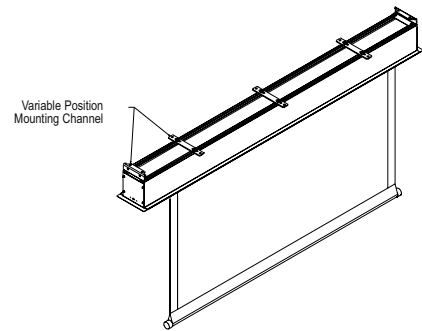


## ADVANTAGE® MANUAL with CSR (Controlled Screen Return)

### Manual Screen With CSR (Controlled Screen Return)

When ordering, make appropriate selections:

1. Select size from charts at the lower right.
2. Select viewing surface:
  - Matte White
  - High Contrast Matte White
  - Video Spectra 1.5
  - High Power
  - GREENGUARD® and GREENGUARD® Children and Schools Certified.
3. Options:
  - Extra Drop available to lower picture area more than normal. Specify total drop at top \_\_\_\_\_ (black or white) or at bottom \_\_\_\_\_ (black or white). 13' maximum total surface height including picture area.
  - No Borders (Black masking borders standard).
  - Pull Rod - 38".



### 4:3 VIDEO FORMAT DIMENSIONS (2" standard black drop at top)

Viewing Area H x W	Nominal Diagonal	Overall Case Length	Approx. Shipping Wt. Lbs.
43" x 57"	72"	65½"	60
50" x 67"	84"	75½"	65
57" x 77"	96"	89½"	77
60" x 80"	100"	89½"	77
69" x 92"	120"	101½"	89
87" x 116"	150"	125½"	100
105" x 140"	180"	149½"	106
120" x 160"	200"	169½"	123

### 16:9 HDTV FORMAT DIMENSIONS (2" standard black drop at top)

Viewing Area H x W	Nominal Diagonal	Overall Case Length	Approx. Shipping Wt. Lbs.
45" x 80"	92"	89½"	75
52" x 92"	106"	101½"	88
54" x 96"	110"	105½"	89
58" x 104"	119"	113½"	95
65" x 116"	133"	125½"	98
78" x 139"	159"	149½"	104

### 16:10 WIDE FORMAT DIMENSIONS (2" standard black drop at top)

Viewing Area H x W	Nominal Diagonal	Overall Case Length	Approx. Shipping Wt. Lbs.
50" x 80"	94"	89½"	75
60" x 96"	113"	105½"	89
69" x 110"	130"	119½"	97
87" x 139"	164"	149½"	104

### SQUARE FORMAT DIMENSIONS

(screens with ^ have 2" standard black drop at top)

Sizes H x W	Overall Case Length	Approx. Shipping Wt. Lbs.
60" x 60"	65½"	61
70" x 70"	75½"	68
84" x 84"	89½"	79
6' x 8'^A	101½"	89
8' x 8'^A	101½"	91
7' x 9'^A	113½"	96
9' x 9'^A	113½"	97
8' x 10'^A	125½"	100
10' x 10'^A	125½"	102
9' x 12'^A	149½"	106
12' x 12'^A	149½"	119

Overall case length dimensions ±¼".

Note: Custom formats and sizes available upon request.

- Manual screen for ceiling recessed applications.
- Designed and developed with the installer and the installation process in mind.
- You can choose to receive the case and fabric together or have them sent separately to ensure that the screen surface is not damaged during the "rough-in" stages of construction.

### SUGGESTED SPECIFICATIONS:

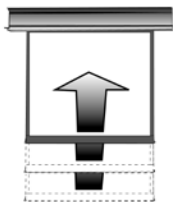
\_\_\_\_\_ projection screen(s), \_\_\_\_\_ (H) x \_\_\_\_\_ (W), recessed ceiling mounting type. To have surface with black masking borders standard on flame retardant and mildew resistant fiberglass fabric, mounted on a ball bearing rigid steel spring roller. To be equipped with Controlled Screen Return (CSR) to control the return speed of the screen surface back into the case. Fabric to be permanently attached to roller. Top, front, and back of case to be made of extruded aluminum. End caps to be of heavy gauge steel. Bottom of case to have a removable access door. Entire case to be powder coated white. Bottom of case to be self-trimming, with a built-in flange around the bottom of the case. Bottom of screen shall be formed into pocket holding tubular metal slat. A steel pull bail shall be attached to the slat. Heavy-duty plastic caps shall protect the ends of the slat. Metal bumper stops shall be built into the case to prevent slat wedging inside case. A 6' pull cord with plastic knob is included. Roller mounting brackets to be adjustable to allow centering or offsetting the screen within the case. Suitable for use in environmental air space in accordance with section 300-22 (c) of the National Electric Code, and sections 2-128, 12-010 (3) and 12-100 of the Canadian Electrical Code, part 1, CSA C22.1.

Matte White: Horizontal seam required when both dimensions exceed 10'.

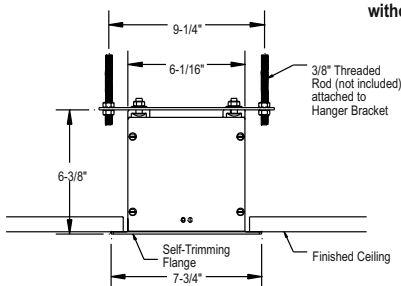
Video Spectra 1.5 and High Contrast Matte White: Available in sizes where both dimensions do not exceed 8'.

High Power: Available in sizes up to and including 9'x12'. Horizontal seam required when both dimensions exceed 6'.

Detailed dimensional drawings, wiring diagrams and installation instructions available upon request. Specifications subject to change without notice.



The CSR (Controlled Screen Return) will allow operator to release screen from the full down position. The screen will "fast travel" to within approximately 2' of the case. The screen will then slow down and coast into the case without damage to the fabric.





## MODEL C

Spring Roller  
Type Screen

When ordering, make appropriate selections:

1. Select size from charts at the lower right.
2. Select viewing surface:
  - Matte White
  - High Contrast Matte White
  - Video Spectra 1.5
  - High Power®
  - Silver Matte
  - GREENGUARD® and GREENGUARD® Children and Schools Certified.

## 3. Options:

- Extra Drop available to lower picture area more than normal. Specify total drop at top \_\_\_\_\_ (black or white) or at bottom \_\_\_\_\_ (black or white). 13' maximum total surface height including picture area.
- No. 6 Wall Bracket - extends 6" non-adjustable extension brackets (75# per pair maximum) (black or white).
- No. 11 Wall Bracket - 10" or 14" non-adjustable extension brackets (75# per pair maximum) (black or white).
- No. 23 Adjustable Wall Bracket - extends 10", 14", 15¾", 18¼", 20" or 24" (75# per pair maximum) (black or white).
- Pull Rod - 38".
- No borders (Black masking borders standard)
- CSR (Controlled Screen Return)
- Floating Mounting Bracket (black or white). Recommended for drywall installations.
- Ceiling Trim Kit.
- Floor Model Available.
  - Floor Stand.
- Carpeted Floor Model Available (black or gray).
- Black case (white standard).



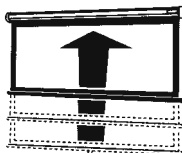
- Largest available pull-down projection screen.
- Manual screen for wall or ceiling mount applications.
- 3" diameter steel spring roller with ball bearings for easy operation.

## SUGGESTED SPECIFICATIONS:

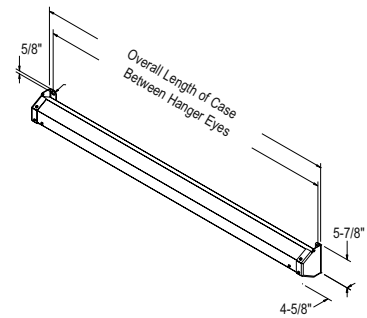
\_\_\_\_\_ projection screen(s), \_\_\_\_\_ (H) x \_\_\_\_\_ (W), wall or ceiling mounting type. To have black masking borders standard on flame retardant and mildew resistant fiberglass fabric, mounted on a ball bearing rigid steel spring roller. Fabric to be permanently attached to roller. To have powder coated white 21-gauge steel case with flat back design. To have heavy-duty end caps concealing roller ends with steel inner plates to support roller and provide added case strength. End caps shall form sturdy brackets for wall or ceiling installations. Bottom of screen shall be formed into pocket holding tubular metal slat. A steel pull bail shall be attached to the slat. The ends of the slat shall be protected by heavy duty plastic caps. Bumper stops shall be built into case to prevent slat wedging inside case. A 6' pull cord with plastic knob is included.

Matte White: Horizontal seam required when both dimensions exceed 10'.  
Video Spectra 1.5, High Contrast Matte White and Silver Matte: Available in sizes where both dimensions do not exceed 8'.  
High Power®: Available in sizes up to 9'x12'. Horizontal seam required when both dimensions exceed 6'.

Detailed dimensional drawings, wiring diagrams and installation instructions available upon request. Specifications subject to change without notice.

Model C With CSR  
(Controlled Screen Return)

The CSR (Controlled Screen Return) will allow operator to release screen from the full down position. The screen will "fast travel" to within approximately 2' of the case. The screen will then slow down and coast into the case without damage to the fabric.



## 4:3 VIDEO FORMAT DIMENSIONS (2" standard black drop at top)

Viewing Area H x W	Nominal Diagonal	Overall Case Length	Between Hanger Eyes	Approx. Shipping Wt. Lbs.
43" x 57"	72"	63½"	61½"	33
50" x 67"	84"	73½"	71½"	36
60" x 80"	100"	87½"	85½"	42
69" x 92"	120"	99½"	97½"	50
87" x 116"	150"	123½"	121½"	58
105" x 140"	180"	147½"	145½"	69
120" x 160"	200"	167½"	165½"	74

## 16:9 HDTV FORMAT DIMENSIONS (2" standard black drop at top)

Viewing Area H x W	Nominal Diagonal	Overall Case Length	Between Hanger Eyes	Approx. Shipping Wt. Lbs.
45" x 80"	92"	87½"	85½"	42
52" x 92"	106"	99½"	97½"	49
54" x 96"	110"	103½"	101½"	51
58" x 104"	119"	111½"	109½"	55
65" x 116"	133"	123½"	121½"	62
78" x 139"	159"	147½"	145½"	69

## 16:10 WIDE FORMAT DIMENSIONS (2" standard black drop at top)

Viewing Area H x W	Nominal Diagonal	Overall Case Length	Between Hanger Eyes	Approx. Shipping Wt. Lbs.
50" x 80"	94"	87½"	85½"	49
60" x 96"	113"	103½"	101½"	55
69" x 110"	130"	117½"	115½"	65
87" x 139"	164"	147½"	145½"	83

## SQUARE FORMAT DIMENSIONS

(screens with ^ have 2" standard black drop at top)

Sizes H x W	Overall Case Length	Between Hanger Eyes	Approx. Shipping Wt. Lbs.
*50" x 50"	53½"	51½"	29
60" x 60"	63½"	61½"	34
70" x 70"	73½"	71½"	38
72" x 72"	75½"	73½"	40
84" x 84"	87½"	85½"	44
6' x 8'^	99½"	97½"	48
8' x 8'^	99½"	97½"	50
7' x 9'^	111½"	109½"	56
9' x 9'^	111½"	109½"	58
8' x 10'^	123½"	121½"	63
10' x 10'^	123½"	121½"	65
9' x 12'^	147½"	145½"	71
12' x 12'	147½"	145½"	79

Overall case length dimensions ±¼".

\*Size not available with CSR.

**Note:** Custom formats and sizes available upon request.



FRONT PROJECTION SCREENS

**DA-LITE**<sup>®</sup>

SCREEN COMPANY

DA-LITE SCREEN COMPANY, INC.  
3100 North Detroit Street  
P.O. Box 137  
Warsaw, IN 46581-0137 U.S.A.  
Phone: 574.267.8101  
Toll Free: 800.622.3737  
Fax: 574.267.7804  
Toll Free Fax: 877.325.4832  
[www.da-lite.com](http://www.da-lite.com)  
[info@da-lite.com](mailto:info@da-lite.com)

