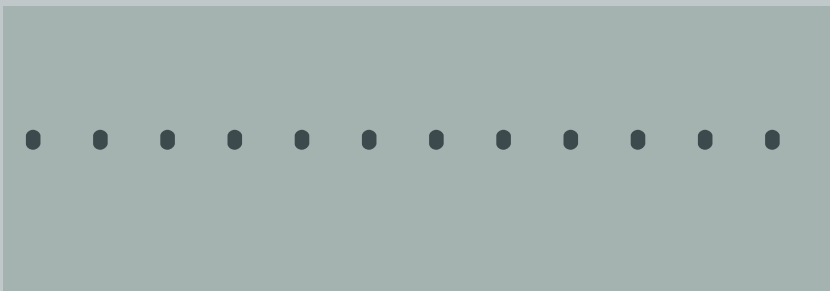


metal toilet
..... partitions

Shanahan's Manufacturing Ltd.



metal toilet partitions



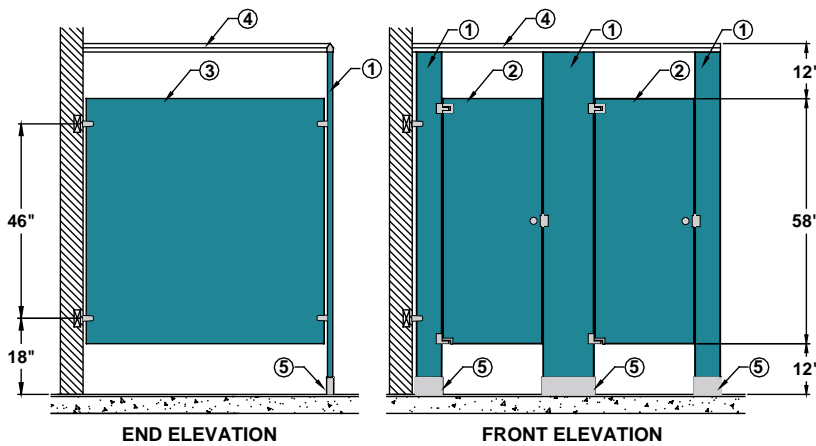
O.B. Overhead Braced Model

The O.B. Model is recommended for its durability and economy.

The overhead rail ensures a rigid and stable compartment.

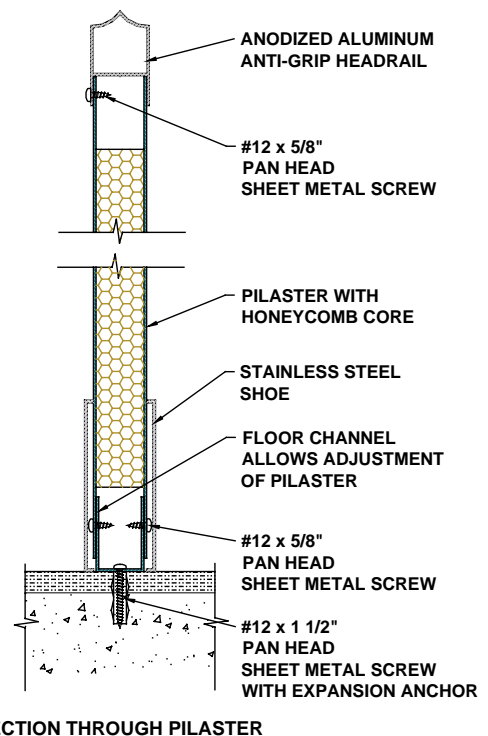
Most popular in schools, restaurants and public washrooms.

The galvanized floor channel provides a simple yet firm platform for the pilaster, which is easily adjustable.



BLOCKING IS RESPONSIBILITY OF GENERAL CONTRACTOR

- ① PILASTER
- ② DOOR
- ③ PANEL
- ④ HEADRAIL
- ⑤ SHOES



metal toilet partitions

.... standard features

DOORS, PANELS, AND PILASTERS

All steel is 20 gauge galvalneal to avoid corrosion. All components are fabricated to an overall thickness of 1 1/4".



SELF LOCKING EDGES

Edges of pilasters, doors, and panels are formed and finished with continuous self-locking edges with the corners welded and ground smooth.



HONEYCOMB CORE

1 1/4" cell honeycomb is sandwiched by 20 gauge galvalneal steel panels.



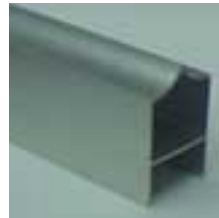
FINISH

All steel surfaces are cleaned and degreased in an automatic wash process and iron phosphatized for positive paint adhesion. Doors, panels, and pilasters are then finished in high solids polyester baking enamel paint.



STAINLESS STEEL SHOES

Two-piece shoe is 4" high and is formed with continuous self-locking edges - no fasteners are required.

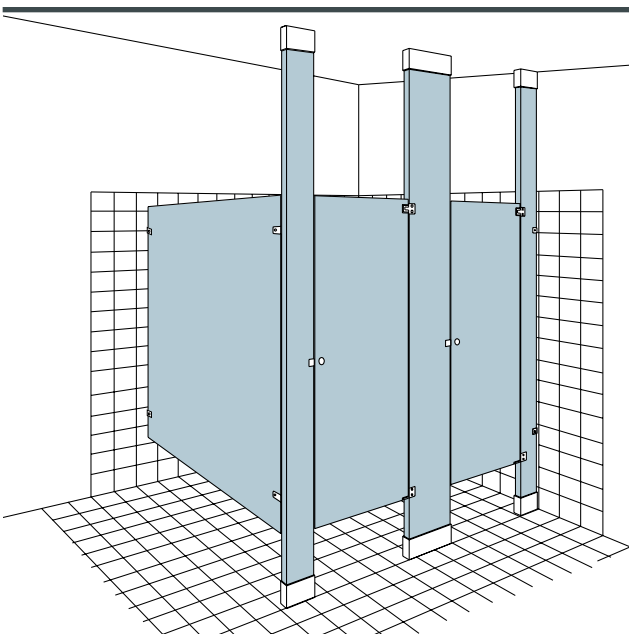


ANTI-GRIP HEADRAIL

The clear anodized aluminum headrail fits over the pilaster and is secured to the wall with support brackets.

HARDWARE

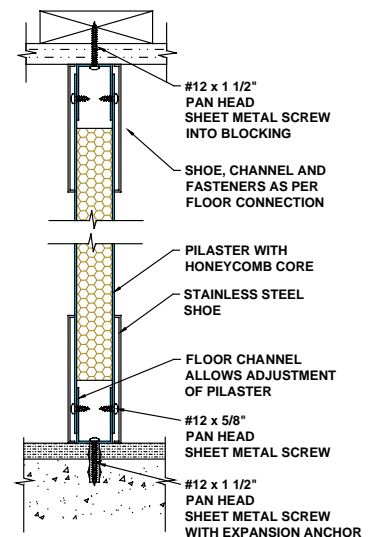
Chrome-plated zinc die castings (Zamac) are standard on all models. See page 11 for all stock hardware.



F.C. Floor and Ceiling Braced Models

Where optimum support is required and abuse can be expected, the F.C. Model is recommended.

The pilasters are attached to the floor and ceiling using galvalneal steel channels, which are identical to type used for the O.B. Model.



SECTION THROUGH PILASTER

metal toilet partitions



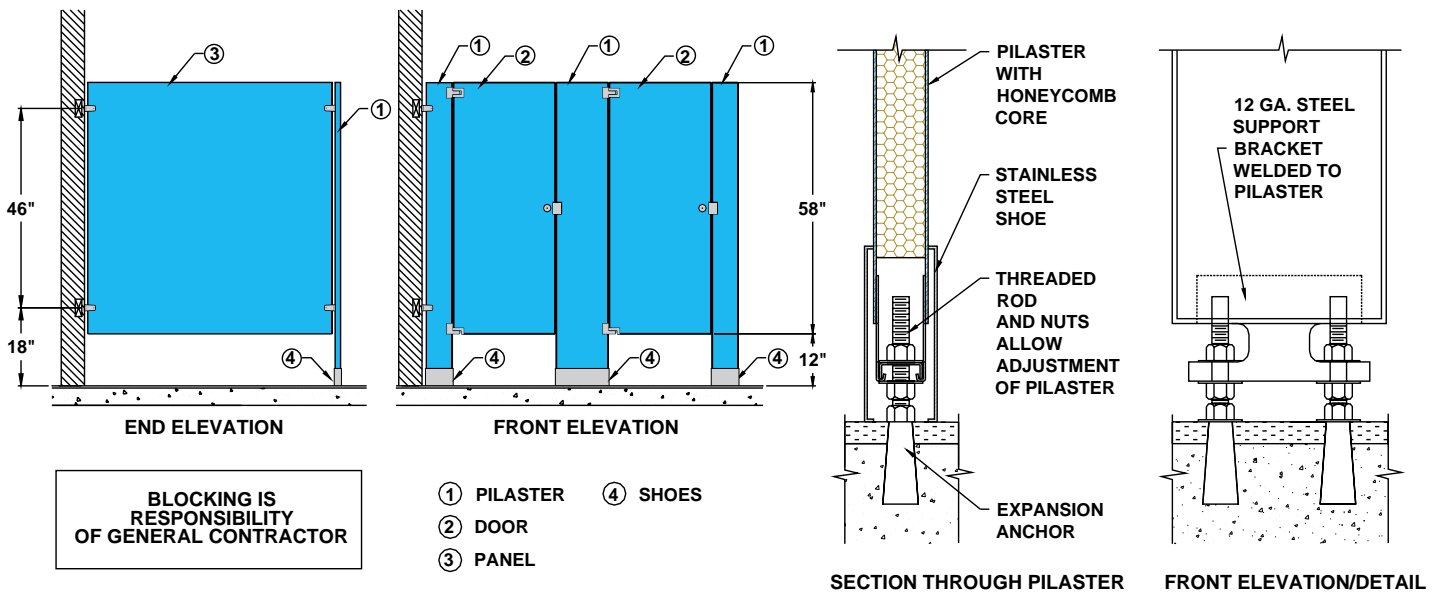
F.B. Floor Braced Model

Flush top gives a modern, uniform appearance.

Stability is achieved by anchoring the pilaster to the floor with threaded rods and expansion anchors.

Recommended in areas where overhead bracing is not desirable and where installation of ceiling hung compartments are not practical due to the height of the ceiling.

Ideal for office buildings.



metal toilet partitions



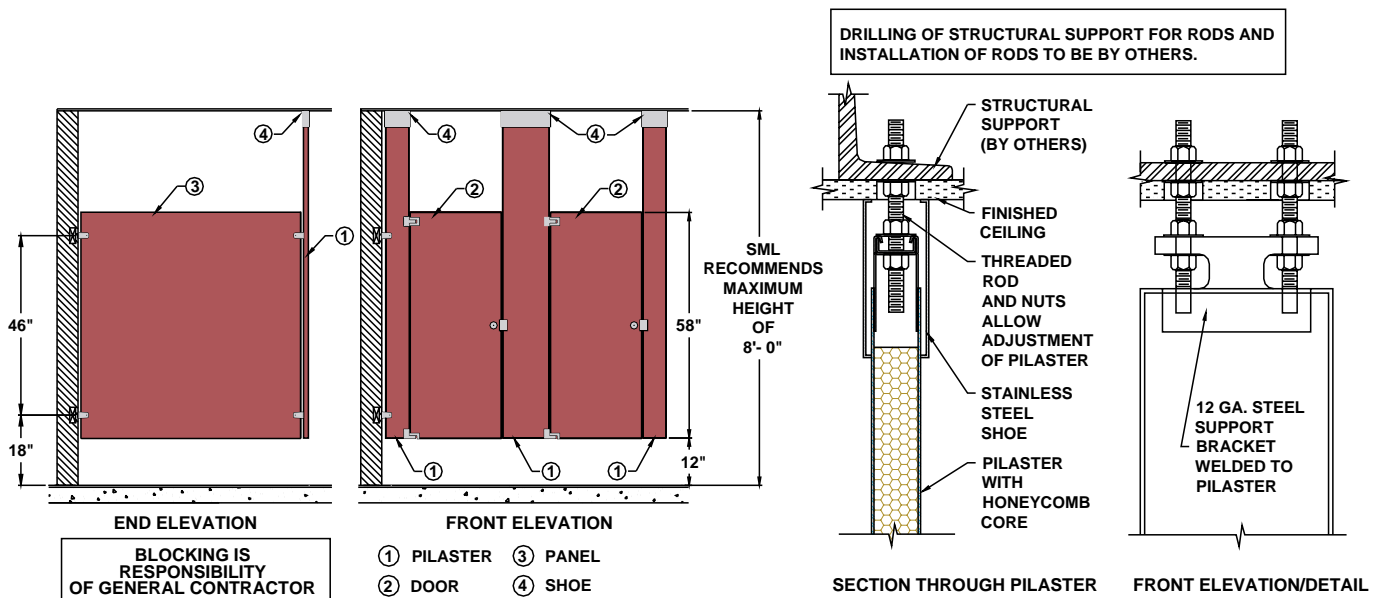
C.H. Ceiling Hung Model

The unobstructed floor area makes cleaning easier and maintenance simpler.

The pilasters are suspended from structural supports above the finished dropped ceiling with threaded rods.

Recommended in areas where ease of cleaning is important. Maximum recommended height is 8'0". Not recommended where doors and panels are in the same plane (alcove compartments).

Typical installations are hospitals and office buildings.



metal toilet partitions



Stainless Steel Construction

All of Shanahan's toilet compartments are available in type 304 stainless steel finish.

Stainless steel is of premium quality construction which offers exceptional longevity with unsurpassed corrosion resistance.

Maintenance is greatly reduced as no parts require painting.

The gleaming appearance will suit most of today's decors.

.... applications

Ideal for installations where the highest degree of cleanliness and corrosion resistance is the prime importance such as:

- Dairy and Beverage areas
- Distilleries
- Food Processing
- Hospital/Laboratory
- Hotels
- Ice & Roller Rinks
- Leisure Centres
- Meat Packing Plants
- Military Bases
- Public Showers
- Sports Arenas
- Swimming Pools

.... models available

- O.B. Overhead Braced
- F.B. Floor Braced
- C.H. Ceiling Hung

options

TEXTURED POWDER COATED FINISHES

vein finish.....			
	Copper Vein	Antique Silver	Gold Vein
hammertone finish.....			
	Nu-Sapphire	Nu-Sepia	Nu-Silver
			
	Patina	Sandstone	White

Colours indicated are for illustration only. Consult distributor for actual colour selection

CUSTOM COLOURS


Send a sample or colour selector to SML for custom matching (in solid colours only).

SPLASH PANELS

Type 304-4 brushed stainless steel for additional protection adjacent to urinals.

ALTERNATE CORE MATERIAL



SML offers a composite plywood core material where reinforced panels are desired. (Our price list refers to this as "Solid Core")



"U" CHANNEL

58" long mounting bracket which can be used in place of the standard wall bracket.


Available in baked enamel or stainless steel.

FULL LENGTH DOOR STOP

58" long - fits over the edge of the door.

Use in areas where enhanced privacy is required.




135 DEGREE ANGLE BRACKET

Can be used to connect pilasters and panels on the inside or outside of the compartment.



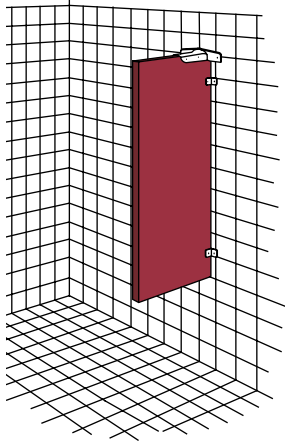
STAINLESS STEEL HARDWARE

Hardware is available in stainless steel - surface mounted only.



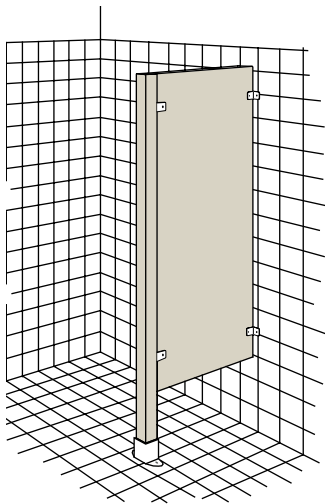
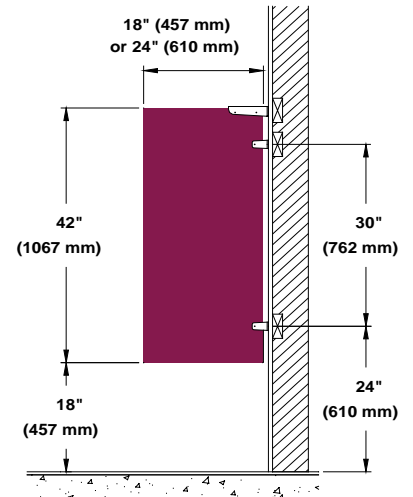
metal toilet partitions

... vision and urinal screens



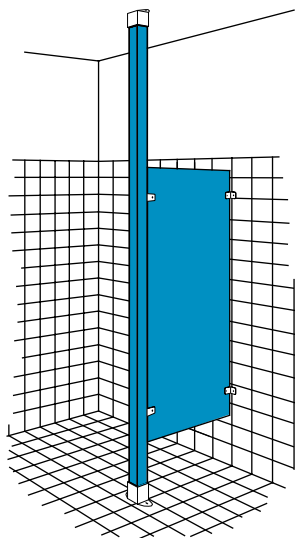
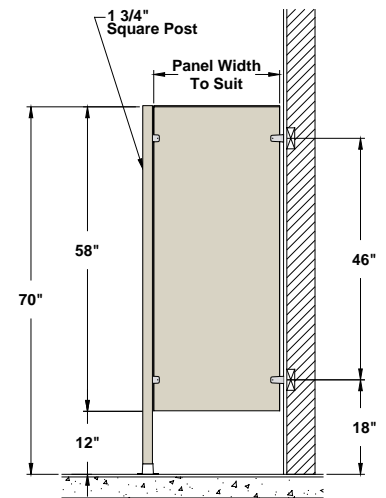
Model "WH" Wall-Hung

- Chrome wall and "wing" brackets
- Screen 18" or 24" wide x 42" high



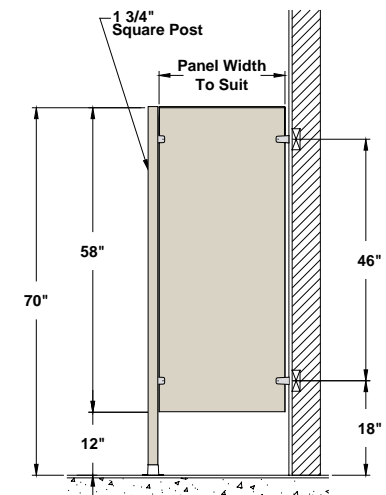
Model "FB" Floor Braced

- 70" high post
- Chrome flange and brackets
- Specify panel width (standard height = 58")



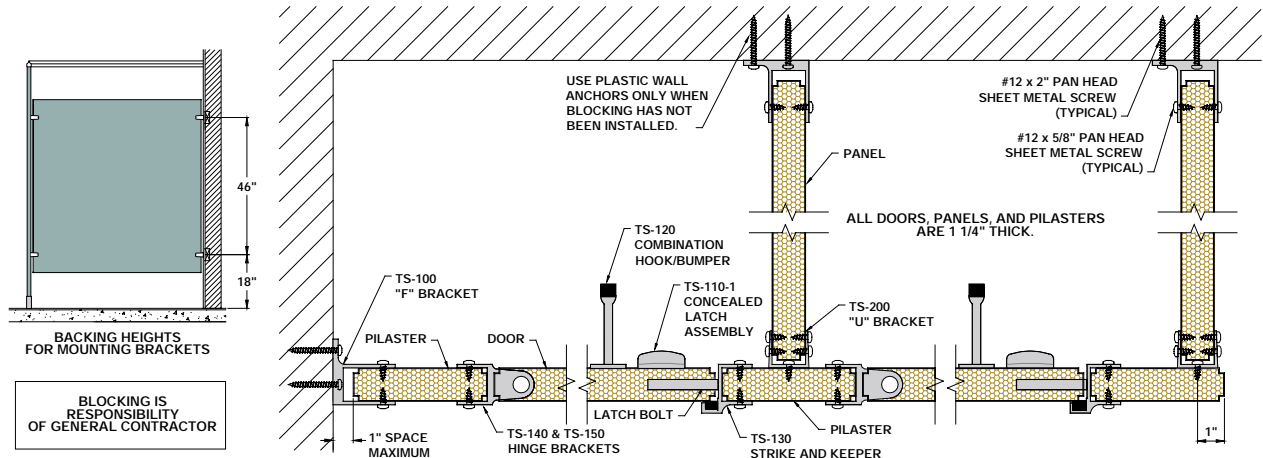
Model "FC" Floor to Ceiling Post

- 120" high post
- Chrome flange and brackets
- Specify panel width (standard height = 58")

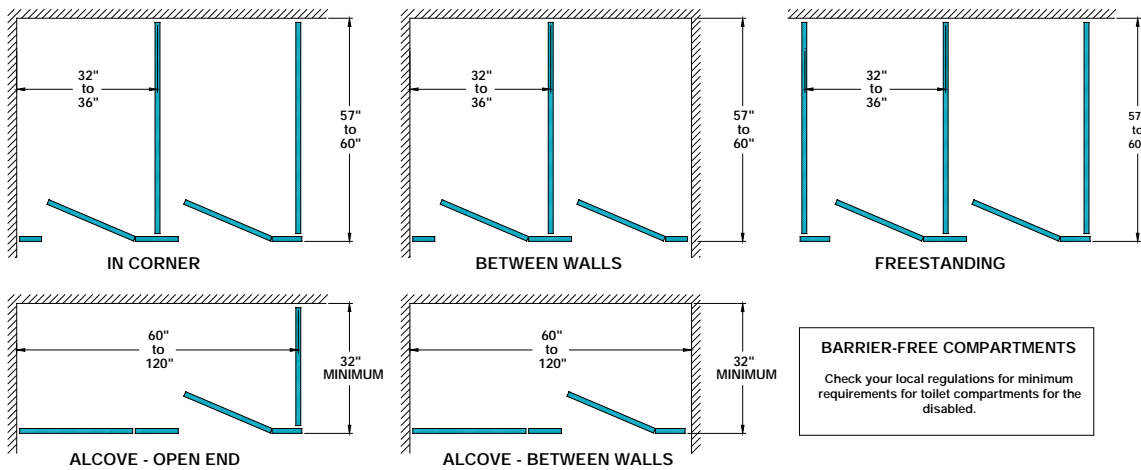


metal toilet partitions

.... typical cross-section and detail

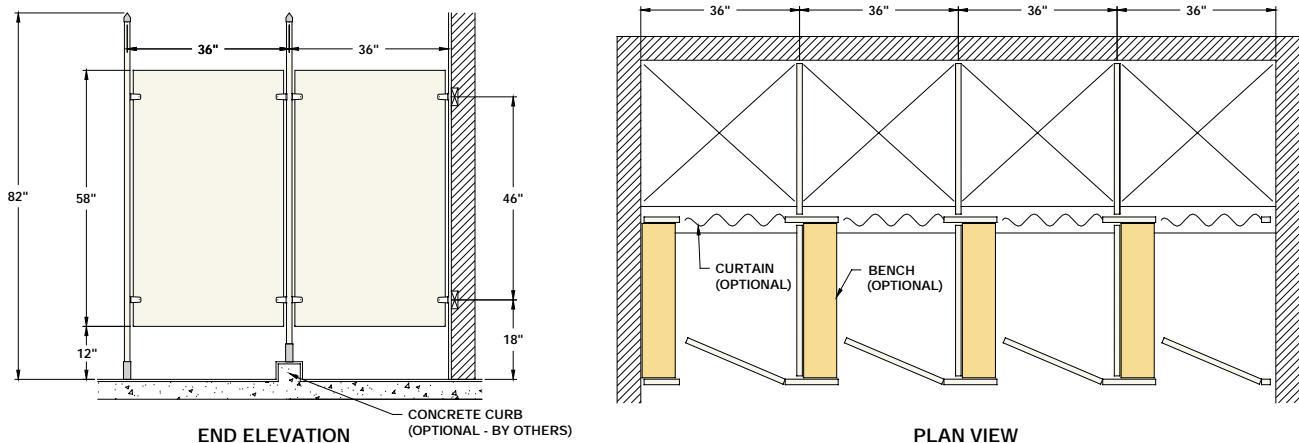


.... typical toilet compartment layouts



.... shower and dressing compartments

Standard toilet stall components are used for economy and simplicity. Compartments are O.B. type. Dressing stalls are available with doors or curtains and can be adapted to shower cabinets.



OPTIONS: Vinyl or duck shower curtains • Chrome shower rods • Concealed curtain track • Cedar, maple or solid phenolic benches • 66" high panels

... specifications

GENERAL SPECIFICATIONS

Baked Enamel Toilet Partitions

MATERIAL

All sheet metal to be galvaneal steel to ASTM #A653 ZF 001 (A01).

DOORS AND PANELS

To be 1 1/4" (32 mm) thick. Constructed of 2 sheets Galvaneal steel, minimum 20 gauge. The sheets are to be cemented under pressure to a honeycomb core. The sheets are to be formed and finished with continuous self-locking edges with the corners mitred, welded and ground smooth. Height of doors and panels to be 57 1/2" (1461 mm) high.

PILASTERS - OVERHEAD BRACED (O.B.)

To be manufactured using the same materials and fabrication as outlined in doors and panels. Height of pilasters to be 81" (2057 mm). A 16 gauge Galvaneal steel floor channel is to be fastened to the floor with expansion anchors. The pilaster is to be positioned over the floor channel and fastened with sheet metal screws to the channel. 4" (102 mm) high shoes to be manufactured of type 304 #4 finish stainless steel to ASTM #A240 minimum 20 with continuous self-locking edges (fasteners are not required).

PILASTERS - FLOOR BRACED (F.B.)

To be manufactured using the same materials and fabrication as outlined in doors and panels. Height of pilasters to be 70" (1778 mm). The top of the pilaster is to be formed the same as the sides. The bottom of the pilaster is to be reinforced with minimum 11-gauge carrying channel secured to the floor with concrete expansion anchors. Stainless steel shoes same as for O.B. pilasters.

PILASTERS - CEILING HUNG (C.H.)

To be manufactured using the same materials and fabrication as outlined in doors and panels. Maximum height for pilasters to be 120" (3048 mm). The bottom of the pilaster is to be formed the same as the sides. The top of the pilaster is to be reinforced with minimum 11-gauge carrying channel and prepared for ceiling connection. Stainless steel shoes same as for the O.B. pilaster.

HEADRAILS

To be clear anodized alloy and temper 6063T5, anti-grip design. The outer flanges are to fit over the facing of the pilaster. The headrail is to be supported at the wall with aluminum painted Zamak support brackets.

HARDWARE

All door hardware, panel and pilaster brackets to be chrome plated zinc die castings (Zamac).

Door hinge housings to be recessed into door for extra strength and flush appearance. 3/8" (9.5 mm) cold rolled steel threaded barrel pin to secure top hinge to door (plastic is not acceptable). Gravity door hinges to be adjustable for any position.

Concealed door latch to be vandal-proof design with slotted cover plate for emergency entrance from the exterior. The latch is to be a positive grip turn knob. Barrier-free doors to be equipped with a lever-latch turn knob. The door swing is to be interchangeable by reversing the door latch.

Combination doorstop and keeper to have slotted hole for latch bolt. A continuous black rubber bumper is to be integral with the doorstop.

Combination coat hook and bumper to be supplied for each door. Fitted with black rubber bumper.

FINISH

All steel surfaces to be thoroughly cleaned in an automatic wash process and undercoated with an iron phosphate treatment utilizing a 5-stage wash and etching process. The paint finish is to be a high solid polyester baking enamel to 45% to 55% gloss. Colour to be selected from Shanahan's colour selector.

Stainless Steel Partitions

MATERIAL

All sheet metal to be type 304 stainless steel #4 finish to ASTM A240.

Stainless steel doors, panels and pilasters are constructed the same as for Baked Enamel Toilet Partitions.

Headrail specifications as per Baked Enamel Toilet Partitions.

Standard hardware is to be chrome plated zinc castings (Zamac).

hardware

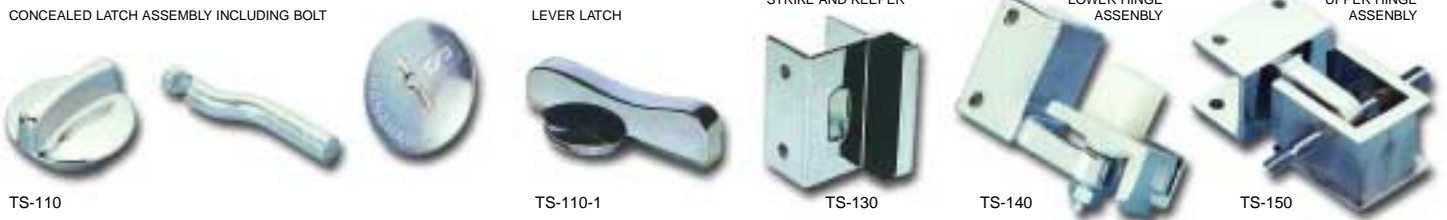
PANEL AND PILASTER BRACKETS



PILASTER HARDWARE



CONCEALED DOOR HARDWARE



SURFACE DOOR HARDWARE



DOOR HARDWARE ACCESSORIES



HEADRAIL AND HEADRAIL BRACKETS



SHOWER AND CHANGE STALL HARDWARE



SCREEN HARDWARE



All standard door, panel and pilaster hardware are chrome-plated zinc die castings (Zamac).

Brackets, concealed door hardware, shoes and headrail are manufactured to fit Shanahan's 1 1/4" square edge.

Replacement and special parts are available upon request.

metal toilet partitions

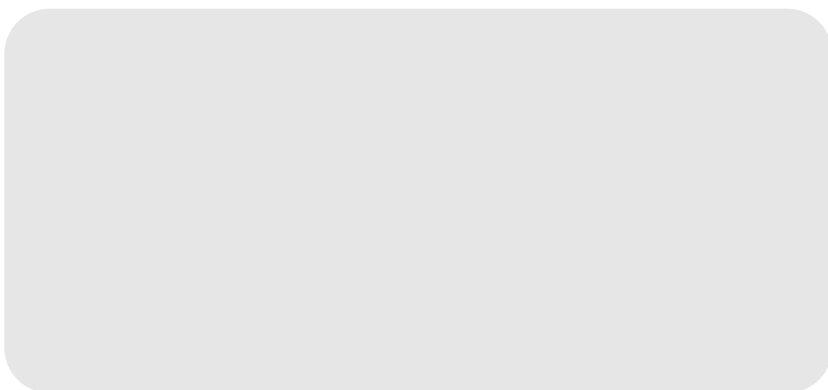
colour selector

					
101 WHITE	970 DAWN	820 DELPH	817 FENLAND	444 KOALA	144 MULBERRY
					
202 SURF WHITE	871 KINDLING WOOD	689 OSHKOSH	605 JADE	832 SMOOTH BROWN	350 CANTERBERRY ROSE
					
584 STEEL GREY	821 PLANTATION	646 BLUE NEON	600 GREEN	389 FIELDSTONE	560 BURGUNDY
					
301 GREY	706 BEIGE	800 ULTRA MARINE	610 RAINTREE	193 OCTOBER HAZE	504 RED
					
220 SLATE	720 SAND	807 BLUE	650 SEA GREEN	436 ROSEWOOD	403 YELLOW

908 BLACK, 400 IVORY, 515 TANGERINE, 420 COPPER, 727 HAVANA BROWN, 226 CORAL AVAILABLE UPON REQUEST

Colours indicated are for illustration only. Consult distributor for actual colour selection

...distributed by



SHANAHAN'S MANUFACTURING LTD.
 2731 - 57 Avenue S.E.
 CALGARY, AB T2C 0B2
 PHONE 403-279-2890
 TOLL FREE 800-661-8420
 FAX 403-203-3345
 TOLL FREE FAX 877-661-8457

www.shanahans.com